

NO. 20

The IJCA in Association with UCD
Present
The Glorney and Faber Cups



Newman House
Dublin
July 20th - 25th 1992

GLORNEY GROUP A

ROUND 1

BELGIUM V SCOTLAND
NETHERLANDS V IRELAND

ROUND 2

BELGIUM V NETHERLANDS
SCOTLAND V IRELAND

ROUND 3

IRELAND V BELGIUM
NETHERLANDS V SCOTLAND

GLORNEY GROUP B

ROUND 1

WALES V ENGLAND
FRANCE V GERMANY

ROUND 2

WALES V FRANCE
ENGLAND V GERMANY

ROUND 3

GERMANY V WALES
FRANCE V ENGLAND

FABER GROUP A

ROUND 1

SCOTLAND V FRANCE
IRELAND V WALES

ROUND 2

SCOTLAND V IRELAND
FRANCE V WALES

ROUND 3

WALES V SCOTLAND
IRELAND V FRANCE

FABER GROUP B

ROUND 1

ENGLAND V BELGIUM
GERMANY V NETHERLANDS

ROUND 2

ENGLAND V GERMANY
BELGIUM V NETHERLANDS

ROUND 3

NETHERLANDS V ENGLAND
GERMANY V BELGIUM

GLORNEY TEAMS

FRANCE

1). GUADALPI D.	2245
2). GOLDGEWICHT L.	2240
3). DOORNBOS Y.	2240
4). GUADINEAU E.	2010
5). MERANT N.	2040

ENGLAND

1). PARKER J.	2345
2). ANSELL S.	2285
3). HASSABIS D.	2290
4). POULTON J.	2235
5). MERRIMAN J.	2235

SCOTLAND

1). BATHIE N.	2300
2). ROBERTS P.	2140
3). ROWSON J.	2145
4). SANGER M.	2020
5). WILLETTS	1995

NETHERLANDS

1). JONKER M.	2236
2). VEDDER H.	2144
3). Van Der WEIDE K.	2154
4). KROEZE F.	2138
5). WIERSMA E.	2146

IRELAND

1). QUINN M.	2164
2). GILLEN A.	2112
3). GILLEN S.	2025
4). PEART A.	2013
5). DARBY C.	2012

BELGIUM

1). CLAESEN J.	2213
2). GOOSSENS E.	2189
3). SOETEWY S.	2130
4). MAAS T.	1935
5). De WACHTER S.	1891

WALES

1). JONES A.	2295
2). FISH A.	1990
3). BACON I.	1975
4). MORTON R.	1920
5). RIZVI N.	1975

GERMANY

1). THEISSEN H.	2235
2). RACHERBAUMER M.	2130
3). ELLERS H.	1992
4). FISCHER M.	2033
5). ULLRICH F.	2000

FABER TEAMS

GERMANY

1). SCHUSTER B.	1824
2). BAUER J.	1730
3).....*BYRNE C. (IRL)	—

WALES

1). GRIFFITHS K.	2005
2). FURMAGE D.	2005
3). DYCE A.	1575

NETHERLANDS

1). TICHELMAN I.	2070
2). JAQUET I.	2085
3). De La MARRE M.	1690

SCOTLAND

1). LITTLE S.	1740
2). LANG H.	1430
3). KING A.	1340

ENGLAND

1). HASLINGER C.	2040
2). ASHBY A.M.	1792
3). EASTWOOD J.	1816

FRANCE

1). GATINE A.	2050
2). MULLER A.	2000
3). COUDRAY C.	2000

IRELAND

1). CORRY A.	1450
2). HOLLINGER R.	1400
3). COLLINS D.	1330

BELGIUM

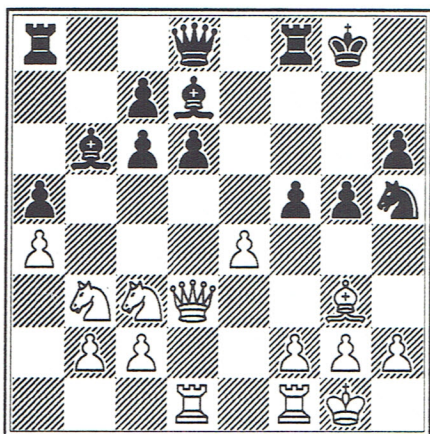
1). VERSTAPPEN P.	1582
2). VERSTAPPEN M.	1553
3). REMY M.	1234

Claesen, J - Bathie, N
BEL-SCO (G1b1), 1992

1.e4 e6 2.d3 d5 3.♗d2 ♖f6 4.♗gf3
 dxe4 5.dxe4 ♗c5 6.♗d3 e5 7.0-0 ♗g4
 8.♗c4 ♗bd7 9.h3 ♗h5 10.♖e2 ♖e7 11.
 c3 a5 12.♗e1 h6 13.♗e3 ♗xe3 14.♖xe3
 ♗c5 15.♗c2 ♗g6 16.♗h4 ♗xe4 17.♗xe4
 ♗fxe4 18.♗f5 ♖f6 19.♗g3 ♗xg3 20.
 ♖xc5 ♗f5 21.♗xe5+ ♗e7 22.♖xc7 ♗d8
 23.♗e3 ♗d7 24.♖c8+ ♗d8 25.♖c7 ♗d7
 26.♖c8+ ♗d8 27.♖c7 ½-½

Roberts, P - Goossens, E
SCO-BEL (G1b2), 1992

1.e4 e5 2.♗f3 ♗c6 3.♗b5 ♖f6 4.0-0
 ♗c5 5.♗c3 d6 6.d4 exd4 7.♗xd4 ♗d7
 8.♗xc6 bxc6 9.♗b3 ♗b6 10.♗g5 0-0
 11.♖d3 h6 12.♗h4 g5 13.♗g3 ♗h5 14.
 a4 a5 15.♗ad1 f5



16.♗xd6 cxd6 17.♖xd6 ♗f6 18.e5 ♗c7
 19.♖c5 ♗g4 20.e6 ♗xh2+ 21.♖h1 ♖e8
 22.exd7 ♖h5 23.♗d3 ♗g3+ 0-1

Soetewey, S - Rowson, J
BEL-SCO (G1b3), 1992

1.♗c3 c5 2.d4 cxd4 3.♖xd4 ♗c6 4.♖h4
 g6 5.♗d2 ♗g7 6.0-0-0 d6 7.e4 ♗e6 8.
 ♖b1 ♗c8 9.♗d3 ♗e5 10.f4 ♗c4 11.♗xc4
 ♗xc4 12.♖f2 ♗xc3 13.♗xc3 ♗xc3 14.
 ♖xa7 ♗g7 15.♖xb7 ♗f6 16.e5 ♗d7 17.
 exd6 0-0 18.♗f3 exd6 19.♗xd6 ♖f6
 20.♗xd7 ♗xd7 21.♗e5 ♗f5 22.♗d1 ♖h4
 23.♗c6 ♗e8 24.g3 ♖xh2 25.♖b3 ♖e2
 26.♖c1 ♗g4 27.♖d5 ♖xd1+ 28.♖xd1
 ♗xb2+ 0-1

Sanger, M - Maas, T
SCO-BEL (G1b4), 1992

1.e4 c5 2.♗f3 ♗c6 3.d4 cxd4 4.♗xd4
 ♗f6 5.♗c3 d6 6.♗b3 e6 7.♗e2 ♗e7 8.

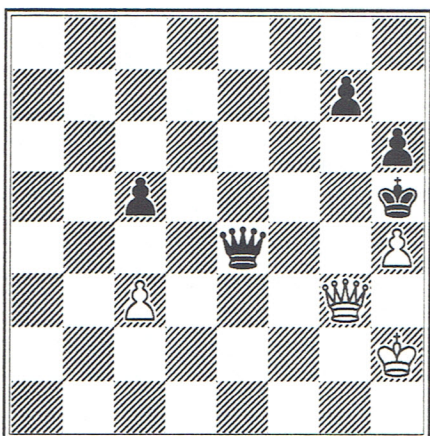
♗e3 0-0 9.0-0 ♗d7 10.f4 a5 11.♗f3
 a4 12.♗d2 ♗a5 13.e5 ♗e8 14.♗e4 ♖c7
 15.♗f3 f5 16.exf6 ♗xf6 17.a3 ♗xe4
 18.♗dxe4 d5 19.♗g5 h6 20.♗xd5 exd5
 21.♖xd5+ ♖h8 22.♗f7+ ♗xf7 23.♖xf7
 ♗f6 24.♗d1 ♗d8 25.f5 ♗c4 26.♗xh6
 ♖b6+ 27.♖h1 gxh6 28.♗xd7 ♗xd7 29.
 ♖e8+ ♖h7 30.♖xd7+ ♖h8 31.♖e8+ ♖g7
 32.♖d7+ 1-0

De Wachter, S - Willetts, S
BEL-SCO (G1b5), 1992

1.d4 ♗f6 2.♗f3 g6 3.e3 ♗g7 4.♗e2 d5
 5.0-0 0-0 6.♗bd2 ♗bd7 7.c3 ♗e8 8.b4
 e5 9.a4 exd4 10.cxd4 ♗e4 11.♗xe4
 dxe4 12.♗e1 ♗b6 13.♗a3 ♗e6 14.♗c1
 f5 15.g3 ♗d5 16.♗c4 c6 17.♗g2 g5
 18.♖c2 ♖d7 19.♗fe1 ♗ac8 20.♖b3 b5
 21.♗f1 f4 22.exf4 ♗xf4 23.♖c2 ♗h3+
 24.♖h1 ♗xd4 25.♗e3 ♖f7 26.♗e2 ♗xe3
 27.fxe3 ♗f8 0-1

Jones, A - Parker, J
WLS-ENG (G1b1), 1992

1.e4 e5 2.♗f3 ♗c6 3.♗c4 ♗c5 4.c3
 ♗f6 5.b4 [Unusual, more normal is
 5.d4 ed 6.0-0, leading to
 equality]. 5...♗b6 6.d3 d6 7.♗b3
 [7.a4 a5 8.b5 ♗e7 9.♗bd2 ♗g6 10.0-0
 0-0 is again more usual]. 7...0-0
 8.0-0 ♗e7 9.♗bd2 c6 10.♗e1 ♗g6 11.
 d4 ♗c7 12.♖c2 ♗h5 13.♗f1 ♗hf4 14.
 dxe5 dxe5 15.♗e3 ♖f6 16.♗f5 h6 17.
 g3 [Maybe 17.♗e3 is better, as this
 weakens the ♖-side]. 17...♗e6 18.
 ♗e3 ♗e7 19.♗3h4 ♗xf5 20.exf5 ♗g5
 21.♗ad1 ♗e8 22.a4 ♖h7 23.f4 exf4
 24.♗d4 ♗xe1+ 25.♗xe1 ♗b6! [It looks
 as if white is well on top, ... but
 looks can be deceiving]. 26.♗xb6
 axb6 27.♗e8 ♗xf5 28.♗xf5 ♗xe8 29.
 ♗d6+ ♖g8 30.♗xe8 ♖e5 [Now for the
 counter-attack!]. 31.gxf4 ♗h3+ 32.
 ♖g2 ♗xf4+ 33.♖f3 ♗h3 34.♖g2 ♗f4+
 [Time trouble]. 35.♖f3 ♗h3 36.♖g2
 ♗g5 37.h4 ♗h7 38.♗xf7+ ♖xf7 39.♖xh7
 ♖xe8 [The smoke has cleared and
 black is a pawn up, but where can
 his King hide?]. 40.♖g6+ ♖d7 41.
 ♖f7+ ♖c8 42.♖f8+ ♖d7 43.♖f7+ ♖e7
 44.♖c4 c5 45.a5 bxa5 46.bxa5 ♖e5
 47.♖b5+ ♖c8 48.a6 bxa6 49.♖xa6+ ♖d7
 [No hiding on the ♖-side]. 50.♖d3+
 ♖e6 51.♖g6+ ♖e7 52.♖d3 ♖f6 53.♖f3+
 ♖f5 54.♖c6+ ♖f7 55.♖c7+ ♖g6 56.♖g3+
 ♖h5 57.♖h2 ♖e4



[If 58. ♖xg7 ♜xh4+ 59. ♜g2 ♜g5+ 60. ♜xg5+ hg wins, or 58. ♜h3 ♜h1+ 59. ♜h2 ♜xh2 60. ♜xh2 ♜xh4]. 0-1

Ansell, S - Fish, A
ENG-WLS (G1b2), 1992

1.e4 e6 2.d4 d5 3.♠d2 ♠f6 4.e5 ♠fd7
5.f4 c5 6.c3 ♠c6 7.♠df3 ♜b6 8.g3
cxd4 9.cxd4 ♠b4+ 10.♜f2 g5 11.fxg5
♠dxe5 12.♠xe5 ♠xe5 13.♜g2 ♠c6 14.
♠f3 ♠f8 15.b3 ♠g7 16.♠b2 ♠d7 17.♠c1
0-0-0 18.♜d2 ♜b8 19.♜f4+ ♜a8 20.♠d3
♠e8 21.♠b1 h6 22.h4 ♜a6 23.♜d2 f6
24.gxf6 ♠xf6 25.♠he1 ♠h5 26.♜f4
♠df8 27.♠xe6 ♠g5 28.hxg5 ♠xf4 29.
gxf4 ♠xf3+ 30.♜xf3 ♠xd4+ 31.♠xd4
♜xe6 32.♠xh8 ♜h3+ 33.♜f2 hxg5 34.
♠e5 d4 35.♠xd4 gxf4 36.♠e4 ♜h2+ 37.
♜f1 ♜h3+ 38.♜e2 ♜e6 39.♜f2 ♜b8 40.
♠c5 b6 41.♠e5+ 1-0

Bacon, I - Hassabis, D
WAL-ENG (G1b3), 1992

1.e4 c5 2.d4 cxd4 3.c3 dxc3 4.♠xc3
♠c6 5.♠c4 e6 6.♠e3 ♠f6 7.♠ge2 ♠e7
8.0-0 0-0 9.♠b3 d6 10.♠g3 ♠a5 11.f4
♠xb3 12.axb3 a6 13.♜f3 e5 14.f5 ♠d7
15.♠h5 ♠c6 16.♠ad1 b5 17.g4 ♠xh5
18.gxh5 ♠g5 19.♠f2 ♠xe3 20.♜xe3 ♜f6
21.♠g2 ♜h8 22.♜b6 ♠ac8 23.b4 ♜h4
24.♜e3 ♠fd8 25.♜g3 ♜xg3 26.hxg3 ♠d7
27.g4 f6 28.♠gd2 ♠cd8 29.♜f2 ♜g8
30.♜e3 ♜f7 31.♠d5 ♠xd5 32.♠xd5 ♜e7
33.♠a1 ♠a8 ½-½

Poulton, J - Morton, R
ENG-WLS (G1b4), 1992

1.e4 c6 2.♠c3 d5 3.♠f3 ♠g4 4.h3 ♠h5
5.d3 e6 6.g4 ♠g6 7.♜e2 ♠b4 8.♠d2
dxe4 9.dxe4 ♠d7 10.0-0-0 ♠gf6 11.e5
♠d5 12.♠e4 ♠e7 13.♠g2 ♜c7 14.♠g3

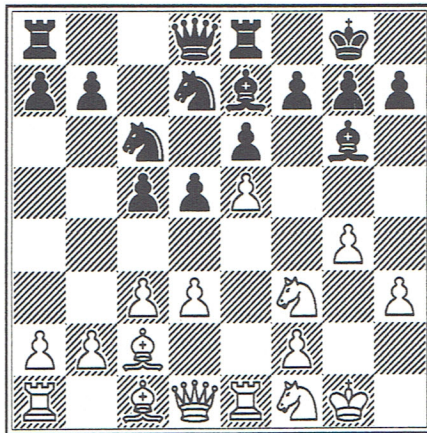
♠c5 15.♠d4 ♠a4 16.f4 h6 17.f5 ♠h7
18.♠hf1 0-0 19.♠h5 ♜b6 20.♠b3 a5
21.f6 ♠c5 22.fxg7 ♠fc8 23.♠e4 ♠d4
24.c3 ♠xb2 25.♜xb2 ♠xc3+ 26.♠xc3
♠xc3 27.♠xh7+ ♜xh7 28.♜c2+ 1-0

Rizvi, N - Merriman, J
WLS-ENG (G1b5), 1992

1.e4 e6 2.d4 d5 3.♠c3 ♠b4 4.e5 c5
5.a3 ♠xc3+ 6.bxc3 ♜c7 7.♠f3 ♠e7 8.
a4 ♠d7 9.♜d2 f6 10.♠b5 0-0 11.♠a3
b6 12.a5 fxe5 13.♠xd7 ♠xd7 14.♠xe5
♠b5 15.♠b1 ♠a6 16.♠d3 cxd4 17.axb6
axb6 18.cxd4 ♠fc8 19.♠xe7 ♜xe7 20.
0-0 ♜d6 21.♠fe1 ♠xd3 22.♜xd3 ♠a4
23.c3 ♠ac4 24.♠b3 ♠8c6 25.h3 ♜c7
26.♠e3 ♠xc3 ½-½

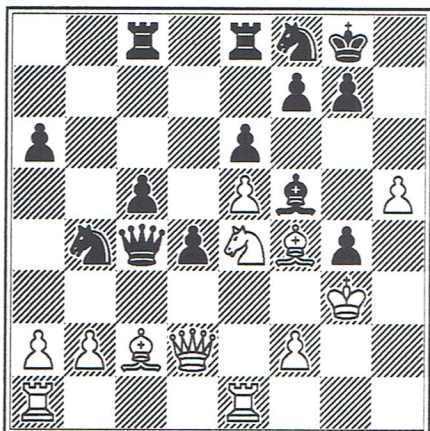
Jonker, M - Quinn, M
NDL-IRL (G1b1), 1992

1.e4 c5 2.♠f3 d6 3.c3 ♠f6 4.♠d3 ♠c6
5.♠c2 ♠g4 6.h3 ♠h5 7.d3 e6 8.♠bd2
♠e7 9.0-0 0-0 [9.♠f1 d5 10.♠g3 ♠g6
is Ostermeyer-Tal, Porz '81/'82].
10.♠e1 ♠e8 11.♠f1 d5 12.e5 ♠d7 13.
g4 ♠g6

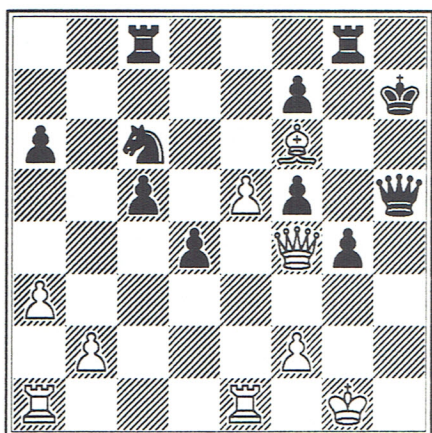


[White is taking chances with his ♜-side]. 14. ♠g3 h6 [Maybe 14...d4, to prevent white playing it]. 15. ♠a4 ♠c8 [White's whole plan should be ♜-side attack with d4, not attacking on the wing where black has a space advantage]. 16. ♠f4 ♠f8 17. ♜d2 ♠h7 18. ♜g2 ♠g5 19. ♠g1 ♠h7 [Otherwise 20.h4 & 21.h5 trapping the bishop]. 20. ♠f3 ♠g5 21. ♠g1 ♠h7 22. ♠3e2 [White avoids the draw]. 22...a6 23. ♠g3 b5 24. ♠c2 d4 [Finally, shutting out the white bishop]. 25. ♠f4 ♠g5 26. ♠f3 ♠f8 27.

h4 ♖xf4 **28.** ♖xf4 **h5!** [Otherwise **29.** **h5**, with **g5** later]. **29.** ♗g5 [If **29.** **g5**, the ♖-side is blocked for a long time and black has the advantage on the ♖-side]. **29...** **hxg4** **30.** ♖e4 ♖d5 **31.** **h5** ♖f5 [If **31...** ♖xh5 **32.** ♖h1 ♖g6 **33.** ♖ael. which is still very good for black, even though the h-file is open]. **32.** **c4** **bxc4** **33.** **dxc4** ♖xc4 **34.** ♖g3 ♖b4



[White is clutching at straws!]. **35.** ♖b1 ♖d5 **36.** **h6** ♖h7 **37.** **hxg7** ♖xg7 **38.** **a3** ♖c6 [Whose ♖ is more exposed?]. **39.** ♖h6+ ♖h8 **40.** ♗g5 ♖xg5 **41.** ♖xg5 ♖f3+ [If **41.** ♖xg5 ♖f3+ **42.** ♖h2 ♖xf2+ **43.** ♖h1 ♖xe1+..., the disadvantage of **35.** ♖b1]. **42.** ♖h2 ♖h3+ **43.** ♖g1 ♖g8 **44.** ♖xf5 exf5 **45.** ♖f4 ♖h5 **46.** ♖f6+ ♖h7



47. **e6** [Sealed move, white resigned without continuing]. [If **47.** ♖f1 ♖g6+. After **47.** **e6** ♖g6! **48.** **ef** ♖h6 **49.** ♖f1 ♖h1+ **50.** ♖e2 ♖e4+ **51.** ♖xe4 **fe** **52.** ♖g5 ♖h2 **53.** ♖d2 ♖f8 **54.** ♖xe4 ♖xf7 wins]. **0-1**

Gillen, A - Vedder, H
IRL-NDL (G1b2), 1992

1. **e4** **e6** **2.** **d4** **d5** **3.** ♖d2 ♖e7 **4.** ♗g3 ♖d7 **5.** **exd5** **exd5** **6.** ♖d3 ♗g6 **7.** **0-0** ♖e7 **8.** ♖e1 **0-0** **9.** **c4** ♖f6 **10.** ♖f1 **c5** **11.** **cxd5** **cxd4** **12.** ♖xd4 ♖xd5 **13.** ♖2f3 ♖d8 **14.** ♖d2 ♖g4 **15.** ♖a4 ♖c5 **16.** ♖c4 ♖d7 **17.** ♖xd7 ♖xd7 **18.** ♖c3 ♖d5 **19.** ♖e4 ♖xf3 **20.** ♖xf3 ♖xc3 **21.** **bxc3** ♖e7 **22.** **h4** ♖f6 **23.** **h5** ♖f8 **24.** ♖e5 ♖e7 **25.** ♖ael ♖c8 **26.** **f4** ♖e6 **27.** **g3** ♖xe5 **28.** **fxe5** ♗g5 **29.** **e6** ♖xe4 **30.** ♖xe4 **fxe6** **31.** ♖xe6+ ♖h8 **32.** ♖xc8 ♖xe4 **33.** ♖xb7 ♖c4 **34.** ♖d5 ♖xc3 **35.** ♖g2 ♖c5 **36.** ♖f7 ♖f5 **37.** ♖e8 ♖g8 **38.** **g4** ♖e5 **39.** ♖c6 ♖f8 **40.** ♖f3 ♖e7 **41.** ♖a4 ♖f6 **42.** ♖f4 ♖d5 **43.** ♖b3 ♖d4+ **44.** ♖g3 ♖g5 **45.** ♖e6 **h6** **46.** ♖f3 ♖d3+ **0-1**

v.d.Weide, K - Gillen, S
NDL-IRL (G1b3), 1992

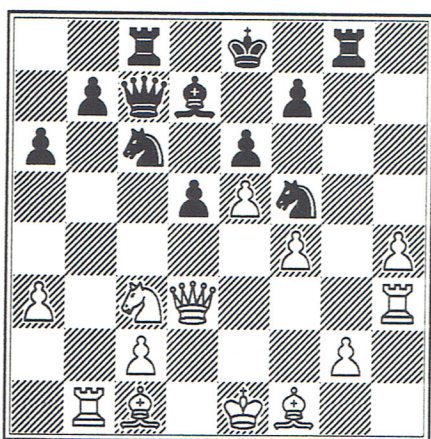
1. **f4** **d5** **2.** ♖f3 **g6** **3.** **c4** ♖f6 **4.** **cxd5** ♖xd5 **5.** **e4** ♖b6 **6.** **d4** ♖g7 **7.** ♖e2 ♖g4 **8.** ♖bd2 ♖8d7 **9.** ♖b3 **0-0** **10.** **0-0** ♖c8 **11.** ♖e3 **e6** **12.** ♖c1 **f5** **13.** ♗g5 ♖xe2 **14.** ♖xe2 ♖e8 **15.** ♖c5 ♖f8 **16.** ♖xb7 ♖d7 **17.** ♖c5 ♖e7 **18.** **e5** **h6** **19.** ♖h3 ♖d5 **20.** ♖c4 ♖d7 **21.** ♖a4 ♖xc5 **22.** **dxc5** **c6** **23.** ♖f2 ♖c7 **24.** ♖d2 ♖d8 **25.** ♖c1 ♖h7 **26.** ♖c4 ♖g8 **27.** ♖h1 ♖f8 **28.** ♖d1 ♖b7 **29.** **b3** ♖c7 **30.** **g4** ♖b5 **31.** **gxf5** **gxf5** **32.** ♖h5 ♖g6 **33.** ♖g1 ♖xg1+ **34.** ♖xg1 ♖d7 **35.** ♖c2 ♖g7 **36.** ♖g2 ♖b4 **37.** ♖g6+ ♖h8 **38.** ♖g3 **a5** **39.** ♖f3 **a4** **40.** **bxg4** ♖xa4 **41.** ♖g3 ½-½

Peart, A - Kroeze, F
IRL-NDL (G1b4), 1992

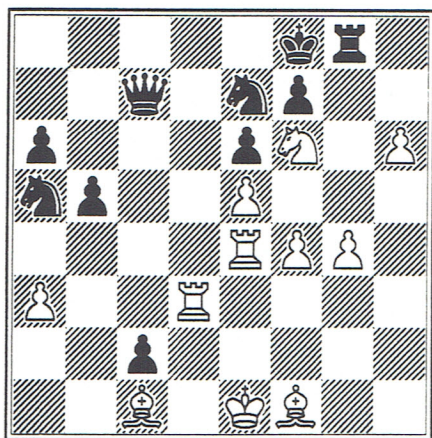
1. **e4** **e5** **2.** ♖f3 ♖f6 **3.** ♖xe5 **d6** **4.** ♖f3 ♖xe4 **5.** ♖c3 ♖xc3 **6.** **dxc3** ♖e7 **7.** ♖d3 ♖d7 **8.** ♖e3 **0-0** **9.** ♖d2 ♖c5 **10.** ♖c4 ♖e6 **11.** ♖xe6 ♖xe6 **12.** **0-0-0** ♖d7 **13.** ♖d4 ♖xd4 **14.** **cxd4** **d5** **15.** ♖he1 ♖fe8 **16.** ♖f4 ♖f8 **17.** **f3** **c6** **18.** ♖xe8 ♖xe8 **19.** ♖e1 ♖e6 **20.** ♖xe6 ♖xe6 **21.** ♖e3 ♖xe3+ **22.** ♖xe3 ½-½

Wiersma, E - Darby, C
NDL-IRL (G1b5), 1992

1. **e4** **e6** **2.** **d4** **d5** **3.** ♖c3 ♖b4 **4.** **e5** **c5** **5.** **a3** ♖xc3+ **6.** **bxc3** ♖e7 **7.** ♖g4 ♖c7 **8.** ♖xg7 ♖g8 **9.** ♖xh7 **cxd4** **10.** ♖e2 ♖bc6 **11.** **f4** ♖d7 **12.** ♖d3 **dxc3** **13.** ♖xc3 **a6** **14.** ♖b1 ♖c8 **15.** **h4** ♖f5 **16.** ♖h3



16...♖a5?! [16...♗cd4 17.h5 ♖a5 18. ♗d2 ♖xa3 19.♞xb7 ♗b5 20.♗xb5 ♖a1+ 21.♜f2 ab 22.h6 ♞h8 23.h7 ♖a8 24. ♞xb5± is the main line, with a wild position. Black must play very actively to get compensation for White's passed h-pawn]. 17.h5 d4? [This allows the white knight into f6 unopposed]. 18.♗e4 ♗a4 [If 18... ♗b5, 19.♞xb5]. 19.c3 dxc3 20.g4 c2 21.♞b4 ♗d8 22.♞xa4 ♞xd3 23.♞xd3 b5 24.♗f6+ ♜f8 25.♞e4 ♗e7 26.h6



26...♞h8 [Black can do very little but watch the white pawns advance]. 27.f5 ♗g8 [27...fe 28.fe ♗xf6 29.h7 ♗c6 30.♗d7 ♖a5+ 31.♜f2 ♖b6+ 32. ♜g2++]. 28.fxe6 fxe6 29.g5 ♗b7 [Finally, the wayward knight moves]. 30.♞f3 ♗xf6 31.exf6 ♜f7 32. g6+ ♜xg6 33.♞g4+ ♜h5 34.♞g5+ [A very good game from white who kept black's queen's knight, king's rook, and queen out of most of the game after 16...♖a5?!]. 1-0

Guadalpi, D - Theissen, H
FRA-GER (G1b1), 1992

1.e4 c5 2.♗f3 d6 3.d4 cxd4 4.♗xd4 ♗f6 5.♗c3 e6 6.♗e3 ♗e7 7.f3 a6 8. ♖d2 ♗c6 9.g4 0-0 10.0-0-0 ♗xd4 11. ♗xd4 b5 12.♗d3 b4 13.♗e2 a5 14.h4 e5 15.♗e3 ♗e6 16.g5 ♗d7 17.♖b1 ♗c5 18.f4 b3 19.cxb3 a4 20.f5 ♗xb3 21. axb3 ♗xb3 22.♖c2 ♖b8 23.♗c4 ♞c8 24. ♗d3 d5 25.exd5 ♗a5 26.d6 ♗xc4 27. dxe7 ♗xe3 28.e8♖+ ♞xe8 29.♞xe3 ♞c8 30.♞c3 ♞xc3 31.♗xc3 a3 32.b3 ♖b7 33.♞c1 ♞c8 34.f6 e4 35.♖a2 ♖b4 36. ♖d2 h5 37.gxh6 ♞b8 38.♖d5 ♞c8 39. fxg7 ♖b6 40.♗xe4 ♗d8 41.♖xd8+ ♖xd8 42.♞c8 1-0

Racherbaumer, M - Goldgewicht, L
GER-FRA (G1b2), 1992

1.d4 e6 2.c4 f5 3.g3 ♗f6 4.♗g2 ♗b4+ 5.♗d2 ♖e7 6.♗f3 0-0 7.0-0 ♗xd2 8. ♖xd2 d6 9.♗c3 ♗c6 10.♞ad1 e5 11. dxe5 dxe5 12.♗d5 ♖d8 13.♖e3 e4 14. ♗f4 ♖e7 15.♗d4 ♗e5 16.♖c3 c5 17. ♗de6 ♗xe6 18.♖xe5 ♞fe8 19.b3 g5 20. ♗xe6 ♖xe6 21.♖xc5 b6 22.♖d6 ♖xd6 23.♞xd6 ♜f7 24.f3 ♖e7 25.♗d4 ♞ad8 26.♞fd1 exf3 27.exf3 f4 28.♞xd8 ♞xd8 29.♞xd8 ♖xd8 30.♜f2 ♖e7 31. gxf4 gxf4 32.♖e2 ♖d6 33.♖d3 ♖e5 34. ♗h3 a5 35.♗c8 ♗e8 36.♖c3 h5 37.h4 ♗d6 38.♗d7 ♗b7 39.♗e8 ♗d6 40.♗g6 ♜f6 41.♗xh5 ♗f5 42.c5 b5 43.♗g4 ♗e3 44.♖d4 ♗c2+ 45.♖e4 ♗b4 46.a4 1-0

Doornbos, Y - Ellers, H
FRA-GER (G1b3), 1992

1.e4 c5 2.♗f3 e6 3.d4 cxd4 4.♗xd4 ♗f6 5.♗c3 d6 6.♗e2 ♗c6 7.0-0 ♗e7 8. ♗e3 0-0 9.♖d2 d5 10.exd5 exd5 11.f3 ♞e8 12.♞fe1 ♗c5 13.♗f2 ♗e6 14.♗a4 ♗d6 15.♗xc6 bxc6 16.b4 ♖b8 17.♗c5 ♗xh2+ 18.♜h1 ♗g3 19.♗a6 ♖e5 20.♗xg3 ♖xg3 21.♖c3 ♗d7 22.♗f1 ♗g4 0-1

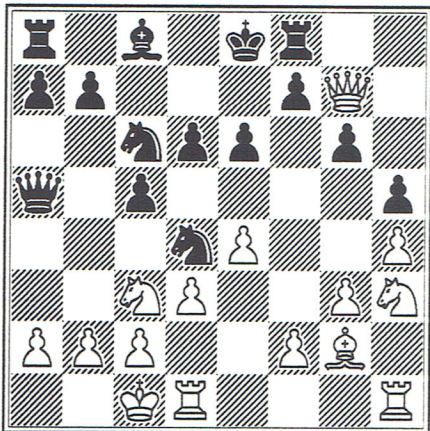
Fischer, M - Guadineau, E
GER-FRA (G1b4), 1992

1.e4 e5 2.♗f3 ♗c6 3.♗b5 ♗c5 4.0-0 ♗d4 5.♗xd4 ♗xd4 6.c3 ♗b6 7.d4 c6 8. ♗c4 d6 9.dxe5 dxe5 10.♖e2 ♗f6 11. ♗d1 ♗g4 12.♞xd8+ ♞xd8 13.♖d3 ♞xd3 14.♗xd3 0-0 15.♗d2 ♗d1 16.h3 ♗d8 17.♗b1 ♗h5 18.♗f1 ♗f4 19.♗e3 ♗a4 20.♗xb6 ♗d1 21.b3 axb6 22.f3 ♗b5 23.c4 ♗a6 24.♜f2 b5 25.cxb5 ♗xb5 26.♗e3 ♞c1 27.♗c2 ♞f1+ 28.♜g3 ♗e2+

29.♖h2 ♜c3 30.♙a3 ♚d3 0-1

Merant, N - Ullrich, F
FRA-GER (G1b5), 1992

1.e4 c5 2.♞c3 ♞c6 3.g3 g6 4.♙g2 ♙g7
5.d3 d6 6.♙e3 e6 7.♞d2 ♞ge7 8.♙h6
♙xh6 9.♞xh6 ♞d4 10.0-0-0 ♞ec6 11.
♞g7 ♞f8 12.h4 h5 13.♙h3 ♞a5



14.♙g5 ♞b4 15.♙h7 1-0

Corry, A - Griffiths, A.K.
IRL-WLS (F1b1), 1992

1.e4 c5 2.♞f3 ♞c6 3.d4 cxd4 4.♞xd4
g6 5.♞c3 ♙g7 6.♙e3 ♞f6 7.♙e2 d6 8.
0-0 0-0 9.♞d2 ♙d7 10.f4 a6 11.f5
♞e5 12.♞f3 ♞eg4 13.♙d4 ♙h6 14.♞d3
♞xe4 15.♞xe4 gxf5 16.♞f2 e5 17.♞xg4
fxg4 18.♞xe5 dxe5 19.♞xe5 ♞e8 20.
♙f4 ♙g7 21.♞ab1 ♞b6+ 22.♖h1 ♙b5 23.
c4 ♞c6 24.♞c2 ♞ad8 25.♙d3 h5 26.c5
♞a5 27.♞c4 ♙d5 28.b4 ♞a3 29.♞c1 ♞c3
30.♞xc3 ♞xc3 ½-½

Furmage, D - Hollinger, R
WLS-IRL (F1b2), 1992

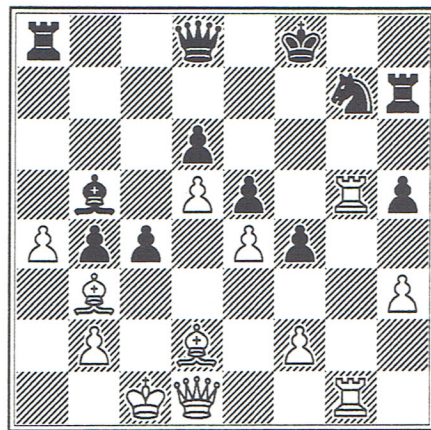
1.e4 d6 2.d4 ♞f6 3.♞c3 g6 4.♙e3 c6
5.♙d3 ♙g7 6.♞d2 ♙g4 7.0-0-0 ♞xe3 8.
♞xe3 0-0 9.f4 ♞d7 10.♞f3 e5 11.dxe5
dxe5 12.f5 a5 13.h4 h5 14.♞hg1 ♞f6
15.g4 ♙g7 16.gxh5 gxh5 17.♞h6 ♞f6
18.♞xh5 ♞e8 19.♞b1 ♞f8 20.♙g5 ♞e7
21.♞c4 ♞f8 22.♙h7 ♞h6 23.♞xh6 ♙xh6
24.♞xf8 ♙xf8 25.h5 ♞c5 26.a4 f6 27.
♞g6 ♙d7 28.♞h1 ♙e8 29.♞gg1 ♙h6 30.
♞g8 ♙xa4 31.♙xa4 b5 32.♙b6 ♞b8 33.
♙d5+ cxd5 34.♙xd5 b4 35.♞c6 ♞c8 36.
♞xe8+ ♞xe8 37.♙xe8 ♞xe8 38.♞g1 a4
39.♞g6 ♙e3 40.h6 1-0

Collins, D - Dyce, A
IRL-WLS (F1b3), 1992

1.e4 e6 2.d4 d5 3.♞c3 ♞f6 4.e5 ♞fd7
5.♞ce2 c5 6.c3 ♞c6 7.♞f3 ♙e7 8.♙g3
h5 9.h3 ♞b6 10.♙e2 cxd4 11.cxd4
♙b4+ 12.♞f1 h4 13.♙h5 ♞xh5 14.♙g5
♞h8 15.♞xf7 ♞f8 16.♙h5 ♞xf7 17.♞f3
♞dxe5 18.dxe5 ♞xe5 19.♙xf7+ ♞xf7
20.♞g4 ♞a6+ 21.♞g1 ♙f8 22.♞xh4 ♙d7
23.♙d2 ♞c8 24.♞c3 ♞c4 25.♞xc4 ♞xc4
26.♞d1 b5 27.a3 ♞c6 28.♞f1 e5 29.
♞e2 d4 30.♙d2 ♙xg2 31.♞h2 ♙d5 32.f3
♙d6 33.♞g2 d3+ 34.♞f2 ♞c5+ 35.♞g3
e4 36.♞e1 ♞f8 37.♙e3 ♙xe3 38.♞xe3
exf3 39.♞d2 ♙e4 40.♞f4 ♙d6 41.♞e5
♞e7 42.♞f2 g5 43.b3 ♞f7+ 0-1

Little, S - Gatine, A
SCO-FRA (F1b1), 1992

1.d4 ♞f6 2.♞f3 g6 3.c4 ♙g7 4.♞c3
0-0 5.e4 d6 6.♙e3 e5 7.d5 ♙a6 8.♙e2
♙e8 9.♙d3 f5 10.a3 f4 11.♙d2 g5 12.
h3 h5 13.♞c2 ♞f7 14.0-0-0 c6 15.
♞df1 ♞ac7 16.♙e2 ♞f6 17.♙h2 ♞h7 18.
♞d1 ♙g7 19.♞f3 c5 20.♞fg1 a6 21.g3
♙d7 22.♙d3 b5 23.gxf4 gxf4 24.♙e2
bxc4 25.♙xc4 ♙b5 26.♞c3 ♞b8 27.♙xb5
axb5 28.♙b3 ♞f8 29.♞g6 ♙e8 30.♞g2
♞a8 31.♞hg1 b4 32.a4 ♙b5 33.♙g5
♙xg5 34.♞xg5 c4



35.♙xb4 cxb3 36.♞g6 ♞a6 37.♞xb3
♙xa4 38.♞c3 ♙e8 39.♞d2 ♙xg6 40.♞xg6
♞f7 0-1

Muller, A - Lang, H
FRA-SCO (F1b2), 1992

1.e4 e5 2.♞f3 ♞c6 3.♙b5 a6 4.♙a4
♞f6 5.0-0 ♙e7 6.♞e1 b5 7.♙b3 d6 8.
c3 0-0 9.h3 ♙a5 10.♞c2 c5 11.d4 ♞d7
12.♙bd2 cxd4 13.cxd4 ♞e8 14.♞f1 ♞f6

GLORNEY & FABER CUPS, DUBLIN 1992 - Round 1.

15.d5 ♖b7 16.♗g3 g6 17.♙e3 ♗g7 18.
♙c1 ♖f6 19.♙d3 ♙d7 20.♗h2 ♙c8 21.f4
exf4 22.♙xf4 ♖c5 23.♙xd6 ♖xd3 24.
♙xd3 ♙b6+ 25.♗h1 ♙xd6 26.♙cd1 ♙h6
27.♗hf1 ♙f4 28.♙f3 ♙c2 29.♙b3 ♙c4
30.♙d3 h5 0-1

King, A - Coudray, C
SCO-FRA (F1b3), 1992

1.e4 c6 2.d4 d5 3.exd5 cxd5 4.♙d3
♖c6 5.c3 ♖f6 6.♙f4 e6 7.♖f3 ♙e7 8.
♖bd2 0-0 9.0-0 ♙d7 10.♙e5 ♙c8 11.
♙e2 a6 12.♖df3 b5 13.♖xd7 ♙xd7 14.
a4 ♖a7 15.axb5 axb5 16.♙a2 b4 17.
♙fa1 ♖c6 18.♙b5 ♙b7 19.♙a6 ♙b6 20.
♙xc8 ♙xc8 21.♙a6 ♙b7 22.♙e5 ♖xe5
23.♙xe5 bxc3 24.bxc3 ♙f8 25.♙xf6
gxf6 26.♙d3 ♙b2 27.♙g3+ ♙g7 28.♙6a3
♙b7 29.h4 h6 30.♙a7 ♙c6 31.♙7a3 ♙b7
32.♙a7 ♙c6 33.♙xf7 ♖xf7 34.♙a7+ ♖e8
35.♙xg7 ♙d6 36.♙g8+ 1-0

Haslinger, C - Verstappen, P
ENG-BEL (F1b1), 1992

1.d4 d5 2.c4 e6 3.♖c3 ♖f6 4.cxd5
exd5 5.♙g5 ♙e7 6.e3 h6 7.♙xf6 ♙xf6
8.♙d3 0-0 9.♖ge2 ♙g4 10.♙b3 c6 11.
♙xb7 ♙b6 12.♙xb6 axb6 13.0-0 ♖a6
14.a3 ♖c7 15.h3 ♙d7 16.♙ac1 ♙fc8
17.♖a2 ♙e7 18.e4 dxe4 19.♙xe4 ♖d5
20.♖ac3 ♙e6 21.♖xd5 ♙xd5 22.♙xd5
cxd5 23.♙xc8+ ♙xc8 24.♙c1 ♙xc1+ 25.
♖xc1 f5 26.♙e2 ♖f7 27.♖f1 ♙f6 28.
♖e1 ♖e6 29.♖d2 ♖d6 30.♖d3 g6 31.♖c3
♖c6 32.a4 ♙e7 33.♖e3 ♙f6 34.♖b5 g5
35.f4 ♙e7 36.♖f3 ♙f6 37.g4 fxg4+
38.♖xg4 h5+ 39.♖xh5 gxf4 40.♖g4 ♙e7
41.♖xf4 1-0

Verstappen, M - Ashby, A.M.
BEL-ENG (F1b2), 1992

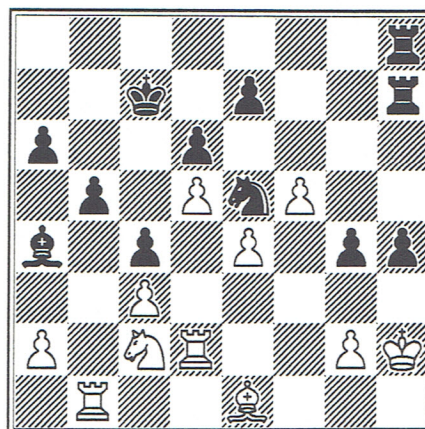
1.d4 ♖f6 2.c4 e6 3.♖f3 b6 4.♙g5 ♙b7
5.♖c3 ♙b4 6.e3 c5 7.♙e2 d6 8.0-0
♖bd7 9.♖b5 cxd4 10.a3 a6 11.axb4
axb5 12.♙xd4 bxc4 13.♙xd6 ♙c8 14.
♙fd1 ♙c7 15.♙ac1 ♙xd6 16.♙xd6 ♙d5
17.♙xf6 gxf6 18.e4 ♖e7 19.♙xd7+
♖xd7 20.exd5 exd5 21.♖d2 ♙a8 22.b3
♙a2 23.♖xc4 ♙xe2 24.♖xb6+ ♖d6 25.
♙d1 ♖c6 26.♖f1 ♙e5 27.♖a4 ♙b8 28.
♖c5 ♙xb4 29.♖d3 ♙xb3 30.♖xe5+ fxe5
31.♖e2 d4 32.f3 ♖d5 33.♙d3 ♙xd3 34.
♖xd3 f5 0-1

Eastwood, J - Remy, M
ENG-BEL (F1b3), 1992

1.e4 c5 2.♖f3 e6 3.d4 cxd4 4.♖xd4
♖c6 5.♖c3 d6 6.♙e3 ♖f6 7.♙e2 a6 8.
0-0 ♙e7 9.f4 0-0 10.♙e1 ♙c7 11.♙d1
♙d7 12.♙g3 g6 13.♖h1 e5 14.♖b3 ♖b4
15.fxe5 dxe5 16.♙g5 ♙d8 17.♙xf6
♙xf6 18.♙g4 ♙xg4 19.♙xd8 ♙axd8 20.
♙xg4 ♙e7 21.♙e2 ♖c6 22.♖d5 ♙fe8 23.
♖g1 ♙c8 24.♙f2 ♙f8 25.♖xe7+ ♖xe7
26.♖c5 ♙c6 27.♖d7 1-0

Schuster, B - Tichelman, I
GER-NDL (F1b1), 1992

1.d4 g6 2.♖c4 ♙g7 3.♖c3 d6 4.e4 ♖d7
5.♙e3 c5 6.d5 ♙xc3+ 7.bxc3 ♙a5 8.
♙c2 ♖gf6 9.♙d3 ♙e5 10.♙e2 ♙a6 11.
0-0 ♖fd7 12.f4 ♖xd3 13.♙xd3 ♖b6 14.
♖g3 ♙xc4 15.♙xc4 ♖xc4 16.♙f2 f6 17.
h3 ♙d7 18.♙fe1 b6 19.♖h2 ♙b5 20.
♙ad1 a6 21.♙b1 ♖d7 22.♖f1 h5 23.h4
♖c7 24.♙ed1 ♙a4 25.♙e1 ♙d7 26.♖g3
♙ag8 27.♖h2 ♙h7 28.♙bd1 g5 29.hxg5
fxg5 30.f5 h4 31.♙e3 ♙e5 32.♙e2
♙gh8 33.♙e1 g4 34.♙b2 ♙a4 35.♙dd2
b5 36.♙b1 c4 37.♖c2



37...♙xc2 38.♙xc2 ♖d3 39.♙d2 h3 40.
♖g3 hxg2 41.♖xg2 ♙h2+ 42.♖g3 ♙8h3+
43.♖xg4 ♖e5+ 44.♖f4 ♙f3+ 0-1

Jaquet, I - Bauer, J
NDL-GER (F1b2), 1992

1.e4 e5 2.♖f3 ♖c6 3.c3 ♖f6 4.d4
exd4 5.e5 ♖d5 6.♙b5 ♙e7 7.0-0 0-0
8.cxd4 a6 9.♙c4 ♖b6 10.♙b3 d6 11.
♖c3 ♙g4 12.♙f4 dxe5 13.dxe5 ♙b4 14.
♖d5 ♙xf3 15.gxf3 ♙c5 16.e6 fxe6 17.
♖xc7 ♙xd1 18.♙axd1 ♙xf4 19.♖xe6
♙xf3 20.♖xc5+ ♖h8 21.♖xb7 ♙e5 22.
♙d8+ ♙xd8 23.♖xd8 g6 24.♙d1 ♖bd7

GLORNEY & FABER CUPS, DUBLIN 1992 - Round 1.

25.♞d6 ♘c5 26.♘e6 ♘xe6 27.♞xe6 ♞f5
28.♞xa6 ♘f3+ 29.♙g2 ♘e1+ 30.♙f1 ♘d3
31.♞a8+ ♙g7 32.♞a7+ ♙h6 33.♞f7 ♞c5
34.♞d7 ♘xb2 35.♞d2 ♞c1+ 36.♙g2 ♘c4
37.♘xc4 ♞xc4 38.♙g3 ♙g5 39.f3 ♙f5
40.♞d5+ ♙e6 41.♞a5 h5 42.h4 ♞c6 43.
a4 ♞c4 44.♞g5 ♙f6 45.a5 ♞a4 46.♞b5
♙f7 47.♞b7+ ♙f6 48.♞b6+ ♙f7 49.a6

♙g7 50.♞b7+ ♙f6 51.a7 ♙e6 52.♙f2
♞a6 53.♙e3 ♙f5 54.♞c7 ♞a3+ 55.♙f2
♙f4 56.♞f7+ ♙e5 57.♙g3 ♞a4 58.♞b7
♙f5 ½-½

... - DeLeMarre, M
GER-NDL (F1b3)*, 1992

0-1

CONSTANT CHESS

**FOR BOOKS, CLOCKS, BOARDS, SETS, MAGAZINES OR
MEMORABILIA,
IF CONSTANT CAN'T SUPPLY,
IT'S PROBABLY NOT AVAILABLE.
141 BEECHPARK, BALLINCOLLIG, CO. CORK,
TEL: 021-541821(W) 9am-6pm.**

RESULTS AFTER THE FIRST ROUND

GLORNEY GROUP A

SCOTLAND	3.5
NETHERLANDS	3.0
IRELAND	2.0
BELGIUM	1.5

GLORNEY GROUP B

ENGLAND	4.0
FRANCE	3.0
GERMANY	2.0
WALES	1.0

FABER GROUP A

WALES	2.5
SCOTLAND	2.0
FRANCE	1.0
IRELAND	0.5

FABER GROUP B

ENGLAND	3.0
NETHERLANDS	2.5
GERMANY	0.5
BELGIUM	0.0

MICHAEL STEIN TRAVEL

INTERNATIONAL TRAVEL AGENTS

**77 LOWER CAMDEN STREET
DUBLIN 2, IRELAND**

TELEPHONE: 01 - 755401 / 784733 / 781500

FAX: 01 - 781809