

Claesen, J - Jonker, M
BEL-NDL (G2b1), 1992

1.e4 d6 2.d4 f6 3.c3 c6 4.f3 g4
5.f2 e6 6.0-0 d5 7.exd5 cxd5 8.f5
9.fxe2 9.fxe2 a6 10.g5 f7 11.d1
0-0 12.c3 b7 13.f4 h6 14.h4 f4
15.fxe7 fxe7 16.f2 df6 17.fxe4
fxe4 18.f5 exf5 19.fxf5 g6 20.g4
f6 21.g3 f4 22.g4 f6 23.g3
1/2-1/2

Vedder, H - Goossens, E
NDL-BEL (G2b2), 1992

1.e4 c5 2.f3 e6 3.c3 c6 4.b5
c7 5.fxc6 fxc6 6.d4 cxd4 7.fxd4
c7 8.0-0 a6 9.f3 f6 10.fde2 d6
11.f4 h6 12.fdf1 e5 13.f3 b5 14.
fd5 fxd5 15.fxd5 f7 16.f3 f8 17.
c3 b4 18.f5 fxc2 19.fac1 fxd3 20.
fxc8+ fxc8 21.fxd3 a5 22.f6 f5 23.
f3 fxe4 24.fxe4 a4 25.fxb4 f7 26.
fd5 f8 27.f3 d7 28.f4 d8 29.
fxd8 fxd8 30.f4 f8 31.f6 f4 32.
fxd7 fxd7 33.fxa4 d5 34.f7+ f6
35.fxd5+ fxd5 36.f7+ f4 37.f2 e4
38.f2 h4 39.g3 h5 40.f7 f3 41.
f7+ f2 42.g4 f5 43.b4 f4+ 44.
f2 f2 45.b5 fxa2 46.b6 e3+ 47.
f3 f4 48.b7 g6 49.h4 f3 50.f7
f2 51.f7 h5 52.f6 f7 53.f5
f3 54.f5+ f4 55.f5 f7 56.f5
f7 57.h5 f4 58.f5 f6 59.f4 d4
60.f5 h8 61.h6 f8+ 62.f6 g1
63.h7 h1 64.f7 f4 65.f5 f4 66.
f2 1-0

Soetewey, S - v.d.Weide, K
BEL-NDL (G2b3), 1992

1.f3 d5 2.g3 f6 3.f2 c6 4.0-0
f5 5.b3 e6 6.f2 b7 7.d3 h6 8.
bd2 h7 9.c4 f7 10.f2 0-0 11.
ad1 f6 12.f1 a5 13.f3 f4 14.
f2 f5 15.fxb4 axb4 16.f1 f6 17.
fd4 ffa8 18.f2 f7 19.fdf1 h5 20.
f1 h4 21.a3 hxg3 22.hxg3 bxa3 23.
fa3 fa3 24.fba3 f4 25.f1 f5
26.f2 f5 27.f3 df6 28.f1 f8
29.f1 dxc4 30.bxc4 f5 31.f1 e5
32.f5 f6 33.c5 f3 34.f3 fxe3
35.fxe3 e4 36.f2 f3 37.f1 fxc5
38.f4 exd3 39.f1 fxe3 40.fxe3
f3+ 0-1

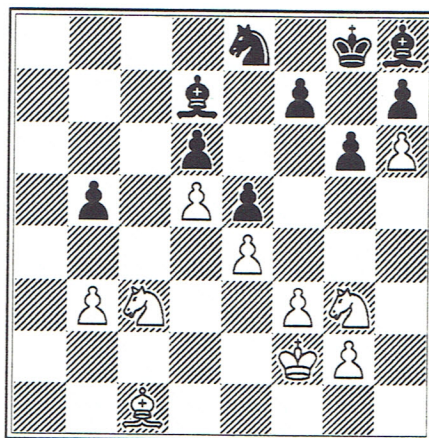
Kroeze, F - Maas, T
NDL-BEL (G2b4), 1992

1.e4 c5 2.f3 f6 3.g3 g6 4.f2 f7

5.d3 e6 6.f4 d6 7.f3 f7 8.0-0
0-0 9.f3 f8 10.f2 b5 11.d4 b4
12.f2 cxd4 13.fxd4 f7 14.f3
fxd4 15.fxd4 d7 16.fdf1 fdf8 17.
fab1 a5 18.fdc1 e5 19.f3 exf4 20.
gxf4 fb5 21.f2 f6 22.f1 f4 23.
a3 f2 24.f1 f4 25.axb4 fxb4 26.
fd4 fa6 27.f3 f4 28.fxd4 fxc2
29.f3 f2 30.faa1 fxd1 31.f4 f8
32.f3 f7 33.f6+ 1-0

De Wachter, S - Wiersma, E
BLG-NDL (G2b5), 1992

1.d4 f6 2.c4 g6 3.f3 f7 4.e4 d6
5.f2 0-0 6.f3 e5 7.d5 c6 8.f2
a6 9.h4 b5 10.h5 f7 11.f3 cxd5
12.cxd5 b7 13.f3 f8 14.f2 f6
15.f1 f4 16.fxc4 fxc4 17.f2 f5
18.b3 f7 19.h6 f8 20.f1 f2+
21.fxd2 ffc8 22.fxc7 fxc7 23.f1
fxc1 24.fxc1 f8 25.f3 f8 26.a4
d7 27.axb5 axb5



28.f2 f6 29.f2 d8 30.f3 f5 31.
fc3 f7 32.f1 f6 33.fbc3 fa5 34.
b4 d8 35.f2 f4 36.f7 f8 37.f1
fxh6 38.fac3 f8 39.f3 f7 40.
fxb5 f8 41.f2 f7 1/2-1/2

Parker, J - Theissen, H
ENG-GER (G2b1), 1992

1.d4 f6 2.c4 g6 3.f3 f7 4.e4 d6
5.h3 0-0 6.f5 b7 7.f3 c6 8.f2
a6 9.a4 f5 10.f2 e5 11.d5 cxd5
12.cxd5 f5 13.f2 b5 14.f3 d7 15.
0-0 bxa4 16.fxa4 fxd2 17.fxd2 f5
18.fxc5 dxc5 19.fef1 ffb8 20.f3
f8 21.f3 c4 22.f2 f8 23.fea1
f7 24.f4 fxa4 25.fxa4 f3 26.f5
fab8 27.fxf8 fxf8 28.f5 fxb2 29.
fd7+ f7 30.fxb8 fxb8 31.f1 1-0

Racherbauer, M - Ansell, S
GER-ENG (G2b2), 1992

1.d4 ♖f6 2.♗f3 c5 3.e3 e6 4.c4 d5
5.♙c3 ♙c6 6.♗d3 dxc4 7.♗xc4 ♗e7 8.
0-0 0-0 9.a3 a6 10.dxc5 ♗xc5 11.b4
♗e7 12.♗b2 b5 13.♗d3 ♗b7 14.♗e2 ♗c7
15.♗ac1 ♗ac8 16.♗e4 ♗xe4 17.♗xe4
♗b8 18.♗xc6 ♗xc6 19.♗e5 ♗xc1 20.
♗xc1 ♗c8 21.♗d1 ♗e4 22.f3 ♗d5 23.f4
f6 24.♗g4 ♗b7 25.e4 ♗b3 26.♗d7 ♗c7
27.♗xc7 ♗xc7 28.♗f3 ♗c2 29.♗d4 ♗b1+
30.♗f2 ♗xe4 31.h4 ♗d1 32.♗e3 ♗xf3
33.gxf3 ♗c2+ 34.♗g3 ♗g6 35.h5 ♗f5
36.♗h4 ♗d3 37.♗c5 ♗xc5 38.bxc5 ♗xa3
39.♗g4 f5 40.♗g5 ♗xc5 41.♗d8+ ♗f7
42.♗d7+ ♗e7 43.♗c6 ♗a7 0-1

Hassabis, D - Ellers, H
ENG-GER (G2b3), 1992

1.d4 ♗f6 2.♗f3 d5 3.g3 c6 4.♗g2 ♗f5
5.0-0 ♗bd7 6.♗bd2 e6 7.b3 h6 8.♗b2
♗e7 9.♗e5 0-0 10.f3 ♗xe5 11.dxe5
♗d7 12.♗e1 ♗c7 13.f4 ♗c5 14.e3 ♗ad8
15.♗c1 ♗e4 16.a3 ♗a5 17.b4 ♗b6 18.
♗xe4 ♗xe4 19.♗xe4 dxe4 20.♗e2 c5
21.b5 ♗d5 22.♗c4 a6 23.a4 axb5 24.
axb5 ♗a8 25.♗c3 ♗a7 26.♗a1 ♗xa1 27.
♗xa1 ♗d8 28.♗xe4 ♗d1+ 29.♗xd1 ♗xd1+
30.♗f2 b6 31.♗e1 ♗b1 32.♗c4 h5 33.
♗e2 g6 34.♗d3 ♗g7 35.♗e2 ♗c1 36.c4
♗b2+ 37.♗d2 ♗a2 38.e4 ♗f8 39.h4 ♗a1
40.♗e1 ♗b2+ 41.♗d2 ♗e8 42.♗f3 ♗a1
43.♗c3 ♗h1+ 44.♗e2 ♗c1 45.♗d2 ♗b2
46.♗d1 ♗a1+ 47.♗c1 ♗a2 48.♗c2 ♗a1
49.♗d2 ♗d4+ 50.♗d3 ♗a1 51.♗c2 ♗a4+
52.♗b3 ♗a8 53.♗d3 ♗a4+ 54.♗b2 ♗b4+
55.♗a2 ♗a4+ 56.♗a3 ♗a5 57.♗b3 ♗e1
58.♗b2 ♗b4+ 59.♗c2 ♗e1 60.♗c3 ♗f2+
61.♗b3 ♗d8 62.♗d2 ♗e7 63.♗e3 ♗f1
64.♗e1 ♗h3 65.♗c3 ♗f1 ½-½

Fischer, M - Poulton, J
GER-ENG (G2b4), 1992

1.e4 e6 2.♗f3 d5 3.e5 ♗e7 4.d4 c5
5.c3 ♗bc6 6.a3 a5 7.♗d3 cxd4 8.cxd4
♗f5 9.♗xf5 exf5 10.♗c3 ♗e6 11.♗b3
♗b8 12.♗b5 ♗e7 13.h4 0-0 14.♗f4 ♗b6
15.♗d3 ♗bc8 16.h5 ♗d7 17.♗c3 ♗xb2
18.♗a2 ♗b3 19.0-0 ♗b8 20.♗c2 ♗b5
0-1

Merriman, J - Ullrich, F
ENG-GER (G2b5), 1992

1.d4 d5 2.c4 e6 3.♗c3 c6 4.♗f3 ♗f6
5.♗g5 dxc4 6.e4 b5 7.a4 b4 8.♗b1 c3
9.bxc3 bxc3 10.♗d3 ♗a5 11.0-0 ♗bd7

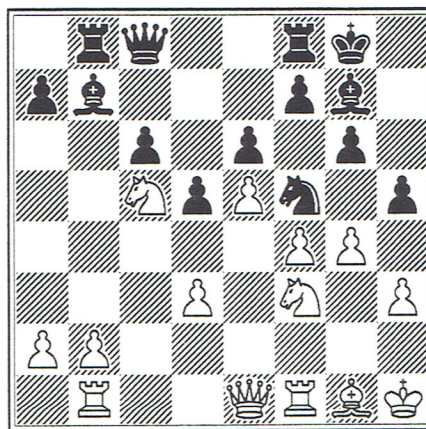
12.♗c2 ♗b4 13.♗c1 c5 14.♗xc3 cxd4
15.♗b5 0-0 16.e5 ♗g4 17.♗xh7+ ♗h8
18.♗e4 ♗b8 19.♗fxd4 ♗gxe5 20.♗b3
♗a6 21.♗c7 ♗b6 22.a5 ♗d6 23.♗d1 1-0

Bathie, N - Quinn, M
SCO-IRL (G2b1), 1992

1.e4 c5 2.♗c3 e6 3.f4 d5 4.♗b5+ ♗c6
5.♗f3 ♗f6 6.d3 ♗e7 7.♗xc6+ bxc6 8.
0-0 ♗a6 9.e5 ♗g8 10.b3 h5 11.♗h1
♗h6 12.♗a4 c4 13.dxc4 ♗f5 14.♗d4
♗xd4 15.♗xd4 dxc4 16.♗d1 ♗xd4 17.
♗xd4 ♗b5 18.♗c3 cxb3 19.axb3 c5 20.
♗xb5 cxd4 21.♗c7+ ♗d7 22.♗xa8 ♗xa8
23.♗b2 ♗c5 24.♗xd4 ♗xd4 25.♗d1 ♗c8
26.♗xd4+ ♗e7 27.c4 ♗b8 28.♗d3 a5
29.g3 ♗b4 30.♗g2 a4 31.bxa4 ♗xa4
32.♗c3 ♗a2+ 33.♗h3 ♗d7 34.♗d3+ ♗c7
35.c5 ♗c2 36.c6 ♗xc6 37.♗d2 ♗c3 38.
♗h4 ♗a3 39.♗xh5 ♗e3 40.♗g4 ♗c8 41.
h4 ♗a3 42.h5 ♗c7 43.♗h4 ♗a4 44.♗g5
♗a3 45.♗g2 ♗d7 46.h6 gxh6+ 47.♗f6
♗e8 48.♗b2 ♗xg3 49.♗b8+ ♗d7 50.♗xf7
♗a3 51.♗b4 ♗d3 52.♗a4 1-0

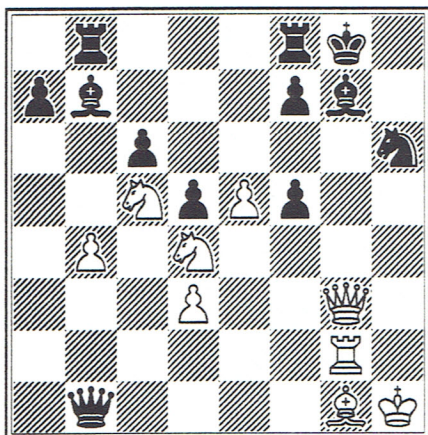
Gillen, A - Roberts, P
IRL-SCO (G2b2), 1992

1.e4 c5 2.f4 ♗c6 3.♗f3 d6 4.♗b5 g6
5.♗xc6+ bxc6 6.d3 ♗g7 7.0-0 ♗h6 [If
7...♗f6 8.e5! & 9.ed is strong]. 8.
♗e1 0-0 9.♗c3 e6 10.♗h1 ♗b8 11.♗b1
d5 [Black must start operations in
the centre]. 12.♗a4 c4 13.e5 [If
13.dc ♗a6 14.b3 ♗xc4]. 13...♗a6
14.♗c5! ♗c8 15.♗e3 ♗f5 16.♗g1 h5
17.h3 cxd3 18.cxd3 ♗b7 19.g4!?



[Very adventurous, 19.♗d4 swapping off black's best piece or forcing it to retreat, is better]. 19...hxg4 20.hxg4 ♗h6 21.♗g3 ♗d8 22.♗d4 ♗a5?!

[The queen is needed for the defence]. 23.b4 ♖xa2 [Black must grab what he can at this stage]. 24.f5! exf5 25.gxf5 gxf5? [25...f6 may last a little longer]. 26.♞f2!! [All out attack]. 26...♜xb1 [A rook is a rook, but to no avail]. 27.♞g2



27...♞g4 28.♞xf5 f6 29.♜xg4 ♞f7 30. e6 ♞c7 31.♞d7 1-0

Rowson, J - Gillen, S
SCO-IRL (G2b3), 1992

1.e4 e6 2.d4 d5 3.♞d2 c5 4.♞gf3 ♞f6 5.exd5 ♞xd5 6.♞b3 ♞d7 7.c4 ♞5f6 8. ♞d3 ♜c7 9.0-0 ♞d6 10.dxc5 ♞xc5 11. ♞xc5 ♞xc5 12.b4 ♞e7 13.♞b2 ♞d7 14. c5 ♞c6 15.♞e5 0-0 16.♜c2 ♞d5 17. ♞ac1 ♞ac8 18.♞fe1 b6 19.♞e3 h6 20. ♞d2 ♞fd8 21.♞g3 ♞f8 22.♜e2 bxc5 23. bxc5 ♞b8 24.c6 g5 25.♞h3 h5 26.♞xh5 ♞xb2 27.♜xb2 ♞xh5 28.♞g6+ fxg6 29. ♞h8+ ♞f7 30.♞h7+ ♞g7 31.♞xg6+ ♞f6 32.♞h6 ♞f8 33.♞b1+ ♞e7 34.♜xg5+ ♞d6 35.♜g3+ e5 36.♞d1 ♞xc6 37.♜c3+ ♞c5 38.♞c1 ♞d6 39.♜a5 ♞d7 0-1

Peart, A - Sanger, M
IRL-SCO (G2b4), 1992

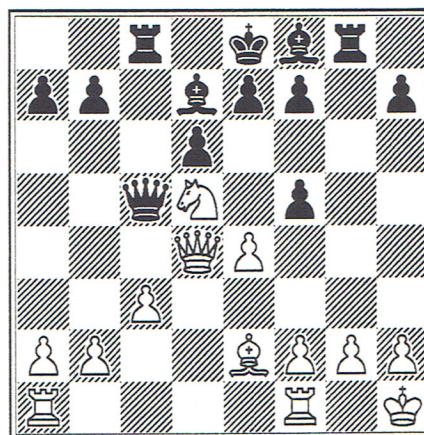
1.e4 e6 2.d4 d5 3.♞d2 ♞f6 4.e5 ♞fd7 5.♞gf3 c5 6.c3 ♞c6 7.♞d3 cxd4 8. cxd4 f6 9.exf6 ♞xf6 10.0-0 ♞d6 11. ♞e1 0-0 12.b3 ♜c7 13.♞b2 ♞d7 14.♞e5 ♞e8 15.♞c1 ♞h5 16.♜c2 ♞ac8 17.h3 ♞b8 18.♜b1 ♞b4 19.♞xc6 bxc6 20.♞c3 ♞xc3 21.♞xc3 ♜b4 22.♜c2 ♞xd4 23.♞a6 ♞g6 24.♞f3 ♜b6 25.♜e2 ♞c7 26.♞d3 ♞xd3 27.♜xe6+ ♞h8 28.♞xd3 ♞e4 29. ♞de3 ♞cf7 30.♞3e2 ♜c5 31.♜e5 ♜b6 32.♞h5 ♞f5 33.♞h4 ♞f4 34.♜e7 ♞4f7 ½-½

Willetts, S - Darby, C
SCO-IRL (G2b5), 1992

1.d4 ♞f6 2.c4 g6 3.♞c3 ♞g7 4.e4 d6 5.f3 0-0 6.♞e3 e5 7.dxe5 dxe5 8. ♜xd8 ♞xd8 9.♞d5 ♞xd5 10.cxd5 c6 11. ♞c4 cxd5 12.♞xd5 ♞c6 13.0-0-0 ♞d7 14.♞g5 ♞f8 15.♞e2 ♞ab8 16.♜b1 ♞b4 17.♞e7 ♞xd5 18.♞xf8 ♞xf8 19.♞xd5 ♞c6 20.♞a5 a6 21.♞c3 f6 22.♞d1 ♞f7 23.♞d5 ♞f8 24.a4 ♞a8 25.♜a2 ♞a7 26. ♜b3 ♞a8 27.♞b6 ♞e8 28.♞c1 ♞e7 29. ♞xc6 bxc6 30.♞xa6 ♞d8 31.♞c4 c5 32. ♜c2 ♞d4 33.b3 ♜e8 34.♞b6 ♞d7 35. ♞b7+ ♜e6 36.a5 1-0

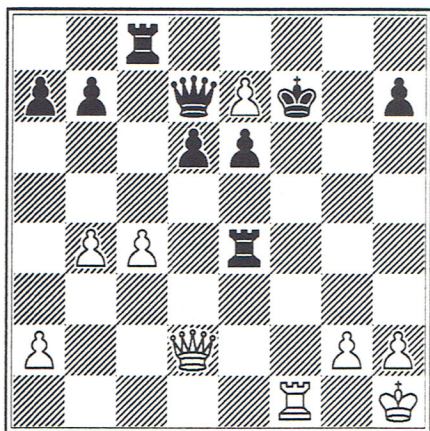
Jones, A - Guadalpi, D
WLS-FRA (G2b1), 1992

1.e4 c5 2.♞f3 ♞c6 3.d4 cxd4 4.♞xd4 ♞f6 5.♞c3 d6 6.♞g5 ♞d7 [6... e6 is preferable here]. 7.♞e2 ♜a5 [A very aggressive move, taking advantage of the fact that white omitted the more usual 7.♞d2]. 8.♞xf6 [forced]. 8...gxf6 9.0-0 ♞g8 10.♞h1 [10.♞d5 looks strong: A-10...♞h3 11.♞f3± or B-10...♞g7 11.♞f5 ♞xf5 12.ef, with a big plus e.g., 12...0-0-0 13.♞h5! or 12...e6 13.fe fe 14.♞h5+ ♞d7 15. ♞f4 C-10...♞xd4 11.♜xd4±]. 10... ♞xd4 11.♜xd4 ♞c8 [no castling for black!]. 12.♞d5 ♜c5 13.c3 f5



[Attacking the centre and freeing the black bishop]. 14.♞d3 fxe4 15. ♜xe4 ♞g6 [Black would have a nice position if his king was on b8 instead of e8]. 16.b4 ♜c6 [Black would love to swop off queens]. 17. c4 ♞e6 18.♞d3 ♞e5 [He was blocking everything on e6]. 19.f4 ♞f5 [Another piece in the game]. 20.♞d2

♞e6 [In the way again]. 21.♠f3 ♞e4
 22.f5 [White must try to swop
 black's two active pieces, the
 queen's bishop and the king's rook,
 whilst keeping all the other pieces
 dormant. But it's not easy]. 22...
 ♞e5 [The rook is safe from attack
 here for a while]. 23.f6 [23.♠xe4!
 ♠xe4 24.♠ae1! {if 24...♠xe1 25.♠xe1
 ♠xc4 26.♠xe7 ♠xe7 27.f6 wins, or
 24...♠xc4 25.♠ec1 wins} 24...♠xc4
 25.♠xe7 ♠xe7 26.f6 ♞e4 27.♠xe4 ♠xe4
 28.♠e1 ♠c2 29.♠xe4 ♠xd2 30.♠xe7+
 ♠f8 31.h3 ♠xa2 32.♠xb7 ♠e8 with a
 probable draw]. 23...e6 24.♠xe4
 ♠xe4 25.♠e7 ♠xe7 26.fxe7 ♠d7! [if
 26...♠xe7?? 27.♠g5+ A-27...♠d7 28.
 ♠xf7+ & 29.♠g8# B-27...♠e8 28.♠g8 &
 29.♠xf7# C-27...♠f8. 28.♠xf7+ ♠xf7
 29.♠f1+ ♠e8 30.♠g8+ & 31.♠f7#
 D-27...f6 28. ♠xf 6+ ♠e8{28...♠d7
 29.♠g7+ ♠d8 30.♠f8+ ♠e8 31.♠xe8+
 ♠xe8 ♠g8±}29.♠f8 ♠d7 30.♠f7#] 27.
 ♠xf7? [White goes wild, but he
 loses a pawn in all other
 variations e.g., 27.♠ad1 ♠c xc4 28.
 ♠h6 ♠xe7 29.♠xh7 f5 should win].
 27...♠xf7 28.♠f1+



28...♠g6 [or 28...♠e8]. 29.♠d3
 ♠cxc4 30.♠xd6 ♠f4! 31.e8♠+ ♠xe8 32.
 ♠d3+ ♠g7 33.♠xf4 ♠xf4 0-1

Goldgewicht, L - Fish, A
 FRA-WLS (G2b2), 1992

1.e4 e6 2.d4 d5 3.♠c3 ♠c6 4.♠f3 ♠f6
 5.e5 ♠d7 6.a3 a6 7.♠d3 b5 8.0-0 ♠e7
 9.♠e2 ♠a5 10.♠e1 c5 11.dxc5 ♠xc5
 12.b4 ♠xd3 13.cxd3 ♠c6 14.♠ed4 ♠b7
 15.♠xc6 ♠xc6 16.♠d4 ♠c8 17.♠d2 ♠d7
 18.♠g4 ♠f8 19.♠g5 ♠xg5 20.♠xg5 h6

21.♠f4 ♠b7 22.♠b3 d4 23.♠xd4 ♠xd4
 24.♠xd4 ♠d8 25.♠b3 ♠d5 26.♠c5 ♠a8
 27.a4 ♠e7 28.a5 ♠hc8 29.f4 ♠c6 30.
 ♠f2 g5 31.g3 ♠g8 32.♠g1 f5 33.exf6+
 ♠xf6 34.♠e3 ♠f5 35.g4+ ♠f6 36.♠af1
 ♠e7 37.f5 e5 38.f6+ ♠xf6 39.♠xf6
 ♠xf6 40.♠xa6 ♠a8 41.♠f1+ ♠g6 42.♠f5
 ♠e6 43.♠xe5 ♠xg4 44.♠c7 1-0

Bacon, I - Doornbos, Y
 WLS-FRA (G2b3), 1992

1.b4 e5 2.a3 d5 3.♠b2 ♠d6 4.e3 ♠f6
 5.c4 c6 6.♠f3 ♠e7 7.♠c3 d4 8.♠a2 d3
 9.e4 ♠xe4 10.♠xd3 f5 11.c5 ♠c7 12.
 ♠xe4 fxe4, 13.♠xe5 0-0 14.♠b3+ ♠e6
 15.♠c3 ♠d7 16.♠xd7 ♠xd7 17.♠e3 ♠c4
 18.♠h3 ♠f7 19.0-0-0 ♠xa2 20.♠c3
 ♠ae8 21.♠de1 ♠e5 22.♠c2 ♠b3 23.♠b1
 ♠c4+ 0-1

Guadineau, E - Morton, R
 FRA-WLS (G2b4), 1992

1.e4 c6 2.d4 d5 3.♠c3 dxe4 4.♠xe4
 ♠f5 5.♠g3 ♠g6 6.h4 h6 7.h5 ♠h7 8.
 ♠f3 ♠d7 9.♠d3 ♠xd3 10.♠xd3 ♠c7 11.
 ♠d2 e6 12.0-0-0 ♠gf6 13.♠e2 0-0-0
 14.♠e5 ♠xe5 15.dxe5 ♠d7 16.f4 ♠c5
 17.♠e4 ♠a4 18.♠e3 ♠b6 19.♠xb6 ♠xb6
 20.♠a5 ♠e7 21.♠xb6 axb6 22.♠xd8+
 ♠xd8 23.♠d1 ♠xd1+ 24.♠xd1 f5 25.
 exf6 gxf6 26.f5 ♠d7 27.g4 e5 28.c4
 ♠e8 29.♠c2 ♠d7 30.♠b3 ♠c7 31.♠a4
 ♠d7 32.b3 ♠c7 33.b4 ♠d7 34.b5 c5
 35.♠b3 ♠d8 36.♠c2 ♠d7 37.♠d3 ♠e8
 38.♠e3 ♠d7 39.♠d2 ♠d8 40.♠e4 ♠d6
 41.♠f3 ♠e7 42.♠e1 ♠d8 43.♠c2 ♠e7
 44.♠e3 ♠d8 45.g5 fxc5 46.♠g4 ♠e7
 47.♠xh6 ♠f6 48.♠f7+ ♠e7 49.♠xe5
 ♠xe5 50.♠xe5 ♠f8 51.♠e4 1-0

Rizvi, N - Merant, N
 WLS-FRA (G2b5), 1992

1.e4 e6 2.d4 d5 3.♠c3 ♠b4 4.e5 c5
 5.a3 ♠xc3+ 6.bxc3 ♠c7 7.♠f3 ♠e7 8.
 a4 b6 9.♠b5+ ♠d7 10.0-0 ♠xb5 11.
 axb5 a5 12.bxa6 ♠xa6 13.♠xa6 ♠xa6
 14.♠e2 ♠b8 15.♠a3 0-0 16.h4 ♠d7 17.
 g3 ♠a8 18.♠c1 cxd4 19.♠g5 ♠c6 20.
 cxd4 ♠a2 21.♠d1 ♠a5 22.♠e1 ♠c4 23.
 ♠g4 ♠h8 24.♠f3 ♠b8 25.h5 h6 26.♠c1
 ♠c6 27.c3 ♠6a5 28.g4 ♠e7 29.♠d3 ♠b3
 30.♠d1 ♠c2 31.♠e3 ♠xc3 32.♠f4 ♠bd2
 33.♠e2 ♠e4 34.♠a1 ♠b4 35.♠a8+ ♠h7
 36.♠f3 ♠g5 37.♠g3 ♠xe3 38.fxe3 ♠b2
 0-1

Little, S - Corry, A
SCO-IRE (F2b1), 1992

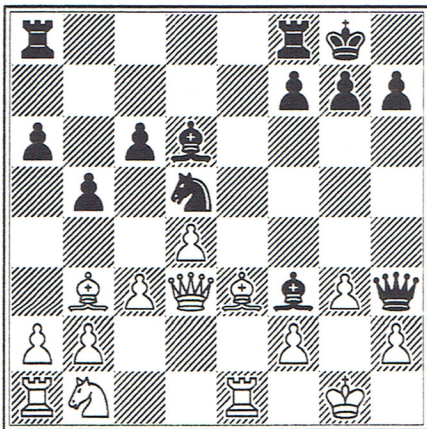
1.d4 ♟f6 2.♟f3 g6 3.♟g5 ♟g7 4.e3
0-0 5.♟d3 d5 6.c4 c6 7.♟c3 dxc4 8.
♟xc4 b5 9.♟d3 ♞e8 10.0-0 ♟bd7 11.
♟c2 ♟b7 12.♟d2 ♟b6 13.♟de4 ♟bd5 14.
♟xf6+ exf6 15.♟h4 ♟b4 16.♟b1 ♟xd3
17.♟xd3 ♟c8 18.♟e2 ♟e6 19.♟c3 ♟d7
20.♞fc1 ♟c4 21.♟f4 g5 22.b3 gxf4
23.bxc4 ♟g4 24.g3 f3 25.♟d3 b4 26.
c5 f5 27.♟f1 f4 28.♞e1 fxe3 29.fxe3
♞e6 30.♞ad1 ♞ae8 31.♟f2 ♞g6 32.♟h1
♟e4 33.♞f1 ♟h6 34.♟xf3 ♟xf3+ 35.
♟xf3 ♞xe3 36.♞f5 ♞e2 37.♞df1 ♞g7
38.♟f6 ♞g6 39.♟e5 ♞xa2 40.♟xf7 a5
41.♞c7 1-0

Hollinger, R - Lang, H
IRL-SCO (F2b2), 1992

1.e4 e5 2.♟f3 ♟c6 3.d4 exd4 4.♟c4
♟f6 5.e5 d5 6.exf6 dxc4 7.♟e2+ ♟e6
8.fxc7 ♟xc7 9.♟g5 ♟d7 10.0-0 0-0-0
11.♟xe6 ♞de8 12.♟xc4 ♞xe6 13.♟d2
♞g6 14.♟h1 ♞g8 15.g3 h5 16.♟f4 ♟f5
17.♟d2 ♞g4 18.♞ae1 ♟e5 19.♟xe5 ♟xe5
20.♟c5 f6 21.f4 b6 22.♟b5 ♟xc2 23.
fxe5 ♟xd2 24.e6 ♞4g5 25.♟d7+ ♟b7
26.e7 ♞e5 27.♞xe5 fxe5 28.e8♟ ♞xe8
29.♟xe8 ♟e2 30.♟g1 ♟e3+ 31.♞f2 ♟e1+
32.♟g2 ♟e4+ 33.♟h3 ♟g4+ 34.♟g2 ♟e4+
35.♟f1 d3 36.♟xh5 ♟h1+ 0-1

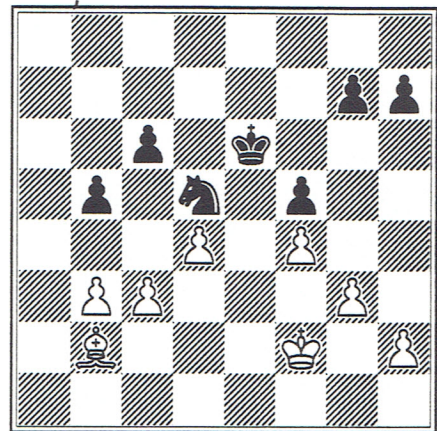
King, A - Collins, D
SCO-IRL (F2b3), 1992

1.e4 e5 2.♟f3 ♟c6 3.♟b5 a6 4.♟a4
♟f6 5.0-0 b5 6.♟b3 ♟e7 7.♞e1 0-0 8.
c3 d5 9.exd5 ♟xd5 10.♟xe5 ♟xe5 11.
♞xe5 c6 12.d4 ♟d6 13.♞e1 ♟h4 14.g3
♟h3 15.♟e3 ♟g4 16.♟d3 ♟f3



[16...♞ae8 is the recommended move,

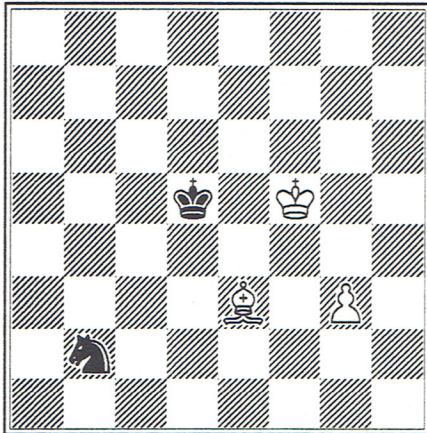
getting black's last piece into the game after 17...f5]. 17.♟f1 ♟h5 18. ♟d2 ♟g4 19.♟d1 f5 20.f4 ♟h8 21.♟xc4 ♟xc4 [21...fg allows 22.♟e4 & 23. ♟c5]. 22.♟e2 ♟g6 [Black must try to keep queens on]. 23.♟g2 ♞f6 24.♟f3 ♟f7 25.♟e5 ♟e8 [Why not 25... ♟xe5?]. 26.♟d2 ♟xe5 27.♞xe5 ♟h5 28. ♞ae1 ♟b6 29.♟e2 ♟xe2 30.♞1xe2 ♟g8 31.b3 a5 32.♟c1 a4 33.♟a3 axb3 34. ♞e8+ ♞xe8 35.♞xe8+ ♟f7 36.♞e7+ ♟g8 37.axb3 ♟d5 38.♞e8+ ♟f7 39.♞f8+ ♟e6 40.♞xf6+ ♟xf6 41.♟b2 ♟e6 42.♟f2



42...h6 [White's Bishop is poor. Black tries to swap off as many pawns as possible]. 43.c4 bxc4 44. bxc4 ♟f6 [If 44...♟b6 45.d5+ cd 46. cd+ ♟xd5 47.♟xc7 h5, with a tough struggle for Black]. 45.♟f3 g5 46. fxc7?! hxc7 47.♟c1? [47.h4 is much better. This move allows the potentially dangerous passed h-pawn to be neutralised]. 47...g4+ 48. ♟g2 ♟e4 49.♟f4 ♟c3 50.h4 gxh3+ 51. ♟xh3 ♟e2 52.♟e3 ♟d6 53.♟f4+ ♟e6 54. ♟e3 ♟d6 55.♟g2 ♟c3 56.♟f3 ♟a4 57. ♟f4 ♟e6 58.♟g5 ♟b2 59.d5+ cxd5 60. cxd5+ ♟xd5 61.♟xf5

(diagram)

[Here White was instructed to seal, losing 40 minutes on the clock]. 61... ♟d3 [Not 61...♟c4 62.♟f4!]. 62.g4?? [Spoiling an otherwise interesting ending. If 62.♟f4 ♟f2!]. 62...♟e5 63.g5 ♟f3 ½-½



Haslinger, C - Schuster, B
ENG-GER (F2b1), 1992

1.d4 d5 2.f3 e6 3.g3 f5 4.c4 f6
5.g2 c6 6.0-0 d6 7.b3 0-0 8.a3
e4 9.f2 dxa3 10.fxa3 d7 11.fxe4
fxe4 12.f3 exf3 13.exf3 a5 14.c2
f6 15.f4 d7 16.c5 e8 17.e2 f7
18.b4 c7 19.e1 ae8 20.d3 g6
21.f2 d8 22.a4 h6 23.a3 d7 24.
e3 f7 25.d3 f6 26.e5 xe5 27.
xe5 g6 28.b5 e7 29.e1 f6 30.a5
d7 31.bxc6 bxc6 32.e3 h8 33.b3
c7 34.a6 f7 35.e2 fe7 36.eb2
d8 37.b7 xb7 38.xb7 xa5 39.b4
a1+ 40.f2 c3 41.f3 a5 42.b6
xd4+ 43.g2 d2+ 44.h3 f2 45.b3
xc5 46.a6 a4 47.b2 c3 0-1

Bauer, J - Ashby, A
GER-ENG (F2b2), 1992

1.e4 e6 2.d4 d5 3.exd5 exd5 4.c3
c6 5.b5 e6 6.f3 d6 7.0-0 ge7
8.e1 d7 9.e5 xe5 10.xe5 0-0-0
11.a4 d6 12.e1 f5 13.c5 xc2
14.xc2 xd4 15.xb7 xb7 16.d3
ef5 17.e3 xe3 18.xe3 b6 19.a4
e6 20.c1 d4 21.e4+ a6 22.b3 d3
23.xb6+ axb6 24.c4+ a7 25.c6
c5 26.c3 1-0

Eastwood, J - Byrne, C
ENG-GER (F2b3)*, 1992

1.e4 e6 2.d4 d5 3.exd5 exd5 4.d3
c6 5.c3 e7 6.f3 g4 7.f4 f6 8.
bd2 0-0 9.0-0 e8 10.e1 h5 11.
e3 d6 12.h3 e6 13.xh7+ f8 14.
e5 f6 15.xc6 bxc6 16.d3 b8 17.
f3 e7 18.f4 d7 19.b3 ec8 20.
e5 d8 21.g4 bc8 22.g3 d6 23.
f3 e8 24.g5 f6 25.xd6+ xd6 26.

xe6+ f7 1-0

Gatine, A - Griffiths, A.K.
FRA-WLS (F2b1), 1992

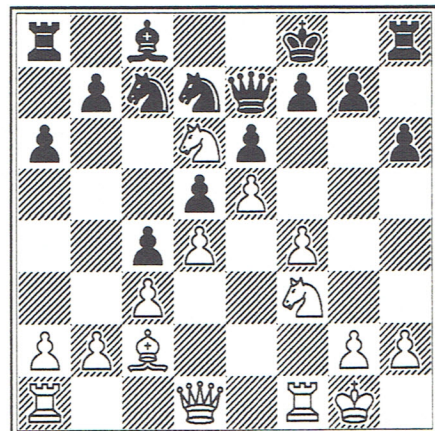
1.e4 c5 2.f3 c6 3.d4 cxd4 4.xd4
f6 5.c3 e5 6.d5 d6 7.g5 a6 8.
a3 b5 9.d5 h6 10.xf6 gxf6 11.h5
e6 12.d1 c8 13.c3 g8 14.h4 g7
15.c2 xd5 16.xd5 e7 17.d1 b6
18.e3 c5 19.e2 c6 20.0-0 g6
21.g4 f4 22.f5 xe2+ 23.xe2 f8
24.d3 c7 25.f1 c6 26.d2 d7
27.h3 b4 28.d5 e8 29.cxb4 g6
30.b5 c5 31.a8+ c8 32.xc8+ xc8
33.bxa6 1-0

Furmage, D - Muller, A
WLS-FRA (F2b2), 1992

1.e4 c5 2.f3 d6 3.d4 cxd4 4.xd4
f6 5.c3 a6 6.e3 e5 7.f3 c7 8.
e2 e7 9.d2 0-0 10.0-0-0 b5 11.
d5 xd5 12.exd5 d7 13.g5 h6 14.
h4 c5 15.h2 d7 16.c3 f5 17.f4
f6 18.xc5 xc5 19.e6 xe6 20.
dx6 ad8 21.h5 e7 22.g3 c8 23.
b1 fd8 24.d5 b6 25.fxe5 dx6
26.xe5 xd1+ 27.xd1 c5 28.xc5
xc5 29.d2 c7 30.b3 1/2-1/2

Coudray, C - Dyce, A
FRA-WLS (F2b3), 1992

1.e4 e6 2.d4 d5 3.c3 f6 4.g5 e7
5.e5 fd7 6.xe7 xe7 7.f4 c5 8.b5
a6 9.d6+ f8 10.c3 c7 11.f3 h6
12.d3 c4 13.c2 a6 14.0-0



14...b5 15.xc8 xc8 16.f5 e8 17.
e1 exf5 18.xf5 g6 19.h3 h5 20.e6
fxe6 21.xe6 d6 22.xd7+ xd7 23.
e5+ d8 24.xg6 xe1 25.axe1 g8
26.e7 e8 27.xc8 xc8 28.xe8+

☞xe8 29.☞f5 ♠b6 30.☞xh5 1-0

Verstappen, P - Tichelman, I
BEL-NDL (F2b1), 1992

1.d4 b6 2.c4 ♠b7 3.♠c3 f5 4.♠f4 e6
5.e3 ♠f6 6.a3 d6 7.b4 g6 8.♠f3 ♠bd7
9.♠e2 ♠g7 10.0-0 ♞e7 11.♠b5 ♞d8 12.
c5 a6 13.♠g5 ♠d5 14.♠c3 h6 15.♠xd5
hxc5 16.♠xf6+ ♞xf6 17.cxd6 gxf4 18.
dxc7 ♞e7 19.☞c1 ☞xh2 20.g3 fxc3 21.
fxg3 ☞hh8 22.♠f3 ☞ac8 23.♠b7 ♞g5
24.♞f3 ♠f6 25.♞f4 ♞h5 26.♞h4 ♞xh4
27.gxh4 ♞d7 28.♠xc8+ ☞xc8 29.♞f2
♠g4+ 30.♞e2 ♠h6 31.☞f3 ☞xc7 32.
☞xc7+ ♞xc7 33.a4 b5 34.axb5 axb5
35.♞d2 ♞c6 36.☞h3 ♞d5 37.h5 gxh5
38.☞xh5 ♠xe3+ 0-1

Yaquet, I - Verstappen, M
NDL-BEL (F2b2), 1992

1.e4 ♠f6 2.e5 ♠d5 3.c4 ♠b6 4.d4 e6

5.♠f3 d6 6.exd6 cxd6 7.d5 ♞c7 8.♠c3
♠d7 9.b3 ♠e7 10.♠d2 0-0 11.♠e2 ♠f6
12.☞c1 ♠xc3 13.♠xc3 ☞c8 14.♞d4 f6
15.0-0 e5 16.♞e3 ♠a6 17.♠d3 ♠c5 18.
♠b1 ♠g4 19.♠h4 a5 20.♞g3 ♞d7 21.h3
g5 22.hxc4 gxh4 23.♞xh4 ♞g7 24.f4
☞d8 25.fxe5 fxe5 26.☞f5 ♞h8 27.☞h5
☞d7 1-0

Remy, M - DeLaMarre, M
BEL-NDL (F2b3), 1992

1.e4 e5 2.♠f3 ♠c6 3.♠c4 ♠e7 4.0-0
d6 5.♠c3 ♠f6 6.d3 ♠g4 7.♠e3 0-0 8.
☞e1 ♞h8 9.h3 ♠h5 10.♞e2 ♠d7 11.g4
♠g6 12.☞ad1 ♠c5 13.d4 ♠xe4 14.dxe5
♠xc3 15.bxc3 ♞c8 16.♠f4 dxe5 17.
♠xe5 ♠xe5 18.♠xe5 ♠h4 19.☞d2 f5 20.
♞g2 fxc4 21.♞xc4 ♞xc4+ 22.hxc4 ☞ad8
23.☞ee2 h5 24.♠xc7 ☞xd2 25.☞xd2
♠e4+ 26.♞g1 hxc4 27.♠d3 ♠f3 28.♠e2
♠g5 29.☞d4 ♠xe2 0-1

KANTOR

HARDWOOD
& PLYWOOD IMPORTERS

D. Kantor Ltd.,
49a Arbour Hill, Dublin 7.
Tel: (01)-716433 & 716741 Telex: 32949 KANT EI.
Fax: (01)-719402

RESULTS AFTER THE SECOND ROUND

GLORNEY GROUP A

NETHERLANDS	7.0
SCOTLAND	6.0
IRELAND	4.5
BELGIUM	2.5

GLORNEY GROUP B

ENGLAND	8.5
FRANCE	8.0
GERMANY	2.5
WALES	1.0

FABER GROUP A

SCOTLAND	6.5
FRANCE	6.5
WALES	4.0
IRELAND	1.0

FABER GROUP B

NETHERLANDS	5.5
ENGLAND	4.0
GERMANY	2.5
BELGIUM	0.0

B.S. LEWIS LIMITED

Unit 45,
Cookstown Industrial Estate,
Belgard Road, Tallaght,
Dublin 24.
Telephone: (01) 525177
Fax: (01) 524184

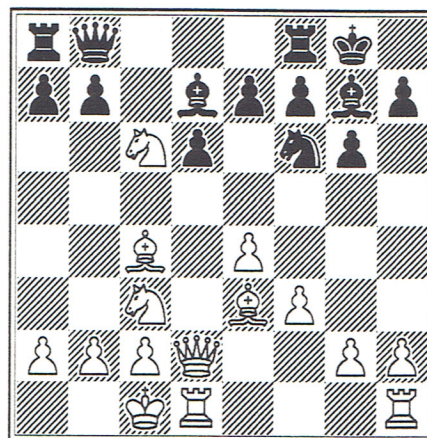
UK SALES OFFICE
6 Newcroft Road,
Woolton,
Liverpool L25 6EP
Telephone: (051) 448 1230
Fax: (051) 486 2423

SOLE IMPORTERS & DISTRIBUTORS
FOR THE UNITED KINGDOM & IRELAND
MAXELL WATCH, CLOCK, CALCULATOR
& GENERAL PURPOSE BATTERIES

maxell®
Energy for the best.

Quinn, M - Claesen, J
IRE-BEL (G3b1), 1992

1.c4 ♖f6 2.♗c3 e5 3.♗f3 e4 4.♗g5 b5
5.d3 bxc4 6.dxe4 ♗c6 7.e3 h6 8.♗f3
♗b4 9.♗xc4 0-0 10.♗d2 ♗xc3 11.♗xc3
♗xe4 12.♖c2 ♗xc3 13.♖xc3 ♖e7 14.0-0
♖b4 15.♖xb4 ♗xb4 16.♞fd1 ♞b8 17.a3
d5 18.♗f1 ♗a6 19.b4 c6 20.♞ac1 ♞b6
21.♗d4 ♗b8 22.♞c5 ♗b7 23.♞dc1 f5
24.♞a5 a6 25.♗e6 ♞e8 26.♗c5 ♗c8 27.
♗a4 ♞b7 28.♞ac5 ♞f7 29.♗e2 ♞ee7 30.
♗h5 ♞f8 31.♗b6 ♗b7 32.g3 g5 33.♗f3
♞f6 34.♞d1 ♖g7 35.♞d4 ♗d7 36.♗xd7
♞xd7 37.♞a5 ♞f8 38.♖f1 ♖f6 39.♗e2
♖e5 40.f4+ gxf4 41.gxf4+ ♖d6 42.
♗xa6 ♖c7 ½-½



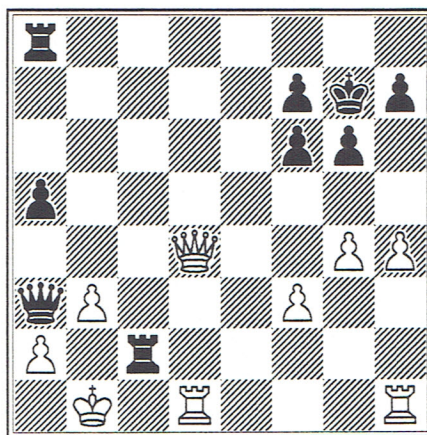
Goossens, E - Gillen, A
BEL-IRL (G3b2), 1992

1.d4 d5 2.c4 e6 3.♗c3 ♗f6 4.♗g5
♗bd7 5.♗f3 c6 6.cxd5 exd5 7.e3 ♖a5
8.♗d2 ♗b4 9.♖c2 0-0 10.♗d3 b6 11.
0-0 ♗xc3 12.♖xc3 ♖xc3 13.bxc3 ♞e8
14.f3 h6 15.♗xf6 ♞xe3 16.♗xg7 ♖xg7
17.♗f5 ♞xc3 18.♞fe1 ♗f6 19.♗xc8
♞xc8 20.♞e7 ♞c2 21.♗f1 ♞e8 22.♞xa7
♞ee2 23.g3 ♞g2+ 24.♖h1 ♞gf2 25.♞a3
c5 26.♞b3 ♗d7 27.dxc5 bxc5 28.♗e3
♞xh2+ 29.♖g1 ♞cd2 30.♗xd5 ♞dg2+ 31.
♖f1 ♗e5 32.♞c3 ♞xg3 33.♗e7 ♖f8 34.
♗f5 ♞g5 35.f4 ♞xf5 0-1

[White opens up the b-file and loses control of d5]. 11...bxc6 12. ♗h6 a5 13.♗xg7 ♖xg7 14.g4 ♞d8? [14...♖b4! 15.♖d4 c5 16.♖d3 ♞fb8]. 15.h4 ♖b4 16.b3?! d5 [16...a4! opening up the ♖'s-side. -1- 17.g5 [if 17.♗xa4 ♞xa4] ♗h5+ -2- 17.♗b1! ♖b7]. 17.exd5 cxd5 18.♗xd5 ♖a3+ 19. ♖b1 ♗b5 20.♖c3 [20.♗xb5 ♞xd5 21.♖e2 a4]. 20...♗xc4 21.♗xf6 exf6 22.♖xc4 ♞dc8! [Keeping as many attacking pieces as possible]. 23.♖d4 [23.♖a4 is nothing after ♖xa4 24.ba ♞b8+ 25.♖c1 ♞b4=. Now black looks in trouble, but...] 23...♞xc2!!

Gillen, S - Soetewey, S
IRL-BEL (G3b3), 1992

1.e4 ♗c6 2.d4 d5 3.♗c3 dxe4 4.d5
♗e5 5.f3 e3 6.♖d4 ♗g6 7.♗xe3 e5 8.
♖a4+ ♗d7 9.♖b3 ♗f6 10.0-0-0 ♖c8 11.
♗d3 a6 12.g4 ♗d6 13.h4 ♗xg4 14.fxg4
♗xg4 15.♗e2 ♗d7 16.♗f3 ♗e7 17.♞hg1
♗f5 18.♗f2 0-0 19.♗e4 ♖h8 20.h5 ♗h6
21.♗h4 f5 22.♗xd6 cxd6 23.♗e7 e4
24.♗xf8 ♖xf8 25.♗g5 b5 26.♗e6 ♗xe6
27.dxe6 1-0



Maas, T - Peart, A
BEL-IRL (G3b4), 1992

1.e4 c5 2.♗f3 d6 3.d4 cxd4 4.♗xd4
♗f6 5.♗c3 g6 6.♗e3 ♗g7 7.f3 0-0 8.
♗c4 ♗c6 9.♖d2 ♗d7 10.0-0-0 ♖b8!?
[This is an interesting idea of bringing the King's ♞ to c8 and then flinging the a & b ♖'s forward, hoping to open up the ♖'s-side for the heavy pieces behind them. 10...♞c8 & 10...♖a5 are the main lines]. 11.♗xc6?!

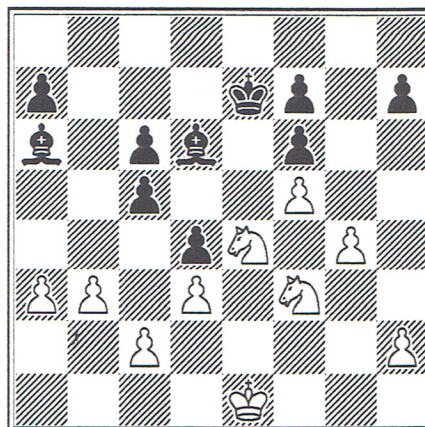
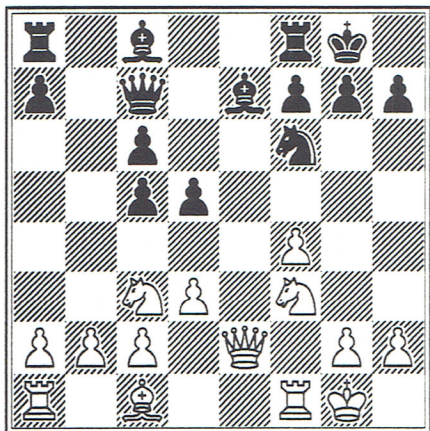
[23...a4 24.♖b2+]. 24.♖xc2 ♖xa2+ 25. ♖d3 ♞e8! [If 25...♖xb3 26.♖e2 and the White ♖ eventually gets safe]. 26.♞he1 ♖xb3+ 27.♖d2 ♖a2+ 28.♖d3 ♖b3+ ½-½

Darby, C - De Wachter, S
IRE-BEL (G3b5), 1992

1.e4 c5 2.♗c3 e6 3.f4 d5 4.exd5 [4. d3 is more usual]. 4...exd5 5.♗b5+

♠c6 6.♖e2+ ♕e7 7.♜f3 ♜f6 8.0-0 0-0
9.♙xc6 bxc6 10.d3 ♖c7

[If 23...♞b8 24.b3! c4?? 25.dc ♙xa3
26.♞a1 wins]. 24.♜xe1 ♜f8 25.♜e4 ♜e7
26.b3!

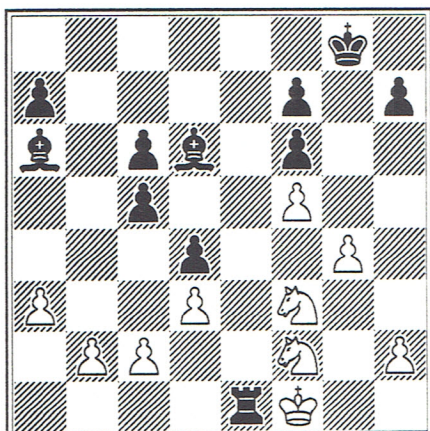


[10...♞e8 looks more accurate]. 11.
♖e1 ♙d6 12.♖h4 ♙a6 13.f5 [white's
chances are on the king's-side].
13...♞ab8 14.a3 [14.♞b1 freeing the
bishop looks good]. 14...♞fe8 15.g4
[Very risky! The plan ♞b1, ♙g5 looks
much better as g4 can be played
later if required 15...d4 Opening
the way to e2]. 16.♙d1 ♞e2 [16...c4
looks very strong, opening
white's king for the two black
bishops, e.g., 17.♜f2 cd 18.cd c5̄
and the a8-h1 diagonal is open].
17.♞f2 ♞be8 18.♜f1 ♞xf2+ 19.♜xf2
♜e7 20.♙g5 ♜d8 [If 20...♖e2+ 21.♜g2
♖xc2 22.♙xf6 gf 23.♖xf6, and
white's attack is winning]. 21.♙xf6
♖xf6?! [If 21...gf 22.♞e1±, but
better than the game]. 22.♖xf6 gxf6
23.♞e1! [Going for the good ending.
Black's set of two double pawns
hamper his bishops]. 23... ♞xe1+

[Fixing all Black's weaknesses].
26...♙c8 27.h3 ♙b7 [Black can only
wait]. 28.♜fd2 ♙f4 [28...♙a6 29.
♜xd6 ♜xd6 30.♜e4+ ♜e5 31.♜xc5 ♙c8
32.♜f2 ♜f4 33.♜e4 ♜e5 34.♜f3 wins].
29.♜c4 ♙a6 30.♙a5 ♙c7 31.♜xc6+ ♜d7
32.♙b8+ ♙xb8 33.♜xc5+ [33...♖c6 34.
♜xa6 ♙d6 35.b4! ♜b5 36.♜c5 ♙xc5 [a5
37.♙b7!] 37 bc ♜xc5 38.♜d2 ♜b 5 39.
c4+! wins]. 1-0

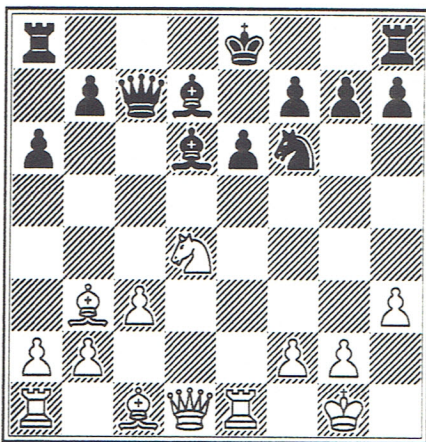
Guadalpi, D - Parker, J
FRA-ENG (G3b1), 1992

1.e4 c5 2.♜f3 d6 3.d4 cxd4 4.♜xd4
♜f6 5.♜c3 g6 6.♙e3 ♙g7 7.f3 ♜c6 8.
♙c4 0-0 9.♖d2 ♙d7 10.0-0-0 ♖a5 11.
♜b1 ♞fc8 12.♙b3 ♜e5 13.h4 b5 14.g4
♜c4 15.♖d3 b4 16.♙xc4 bxc3 17.h5
♖b4 18.b3 ♞ab8 19.♜a1 ♞c5 20.♜e2
♞a5 21.♙d4 ♖a3 22.♜xc3 ♞c8 23.hxg6
hxg6 24.g5 ♞xg5 25.♙d5 ♜xd5 26.♙xd5
♖a5 27.♜b1 ♞xd5 28.exd5 ♜f5 29.♖d2
♞xc2 30.♖xa5 ♞d2+ 31.♜c1 ♞c2+ 32.
♜b1 ♞d2+ 33.♜c1 ♞c2+ ½-½

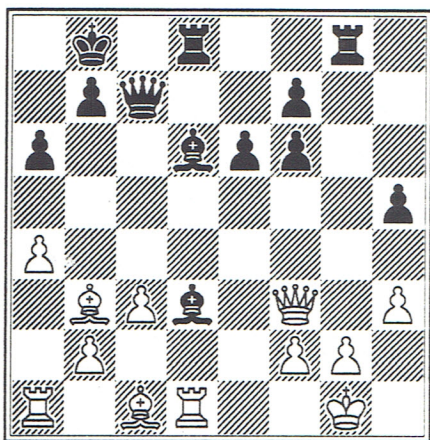


Ansell, S - Goldgewicht, L
ENG-FRA (G3b2), 1992

1.e4 e6 2.d4 d5 3.♙d2 c5 4.exd5
♖xd5 [4...ed 5.♙b5+ ♙d7 6.♖e2+ ♙e7
7.dc ♜f6 8.♙b3 0-0∞ is the
alternative]. 5.♙gf3 cxd4 6.♙c4 ♖d6
7.0-0 ♜f6 8.♙b3 ♜c6 9.♙bxd4 ♜xd4
10.♜xd4 [10.♖xd4 ♖xd4 11.♜xd4 a6
12.♙e2 ♙d7±]. 10...a6 11.♞e1 ♖c7
12.♙b3 [12.♙d3 ♙d6 13.♜f5!± is
Shamkovich-Seirawan, US. CH. 1980].
12...♙d7 13.c3 ♙d6 14.h3



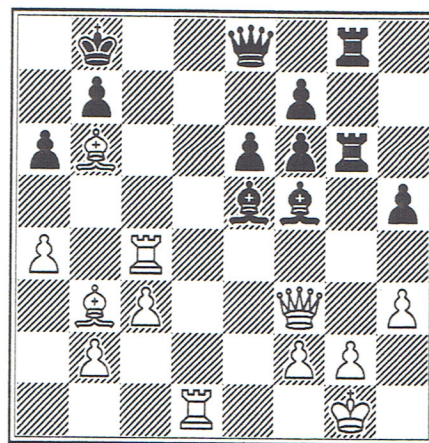
[14.♖f5! still looks good].14...
 0-0-0 15.♗e2 ♜b8 16.a4 ♞hg8
 [Starting operations on the ♗-
 side]. 17.♖f3 [Stopping 17...g5].
 17...♙c6 18.♗e5 ♗e4 19.♙g4 ♙d3!
 20.♗f3 h5 21.♖xf6 [21.♗e3 ♗e4
 22.♗e2 g5+]. 21...gxf6 22.♞d1



[If the ♗ takes either pawn,22...
 ♗c6 is very strong].22...♙f5+ 23.
 ♗e3 ♞g6 24.♞d4 [Again: 24.♗xh5 ♗c6!
 25.f3 ♞dg8 26.♗d2 ♞g3!]. 24...♞dg8
 25.♞ad1 ♗e5 26.♞c4 ♗e7 27.♙c5 ♗e8
 28.♙b6

(diagram)

[28.♗h1 ♞xg2 29.♗xg2 ♞xg2 30.♗xg2
 ♗g8+ 31.♗f3 ♙xh3+].28...♞xg2+ 29.
 ♗xg2 ♙xh3 30.♗g3 h4 [If 30.♙xg3 31.
 fg ♗e7 32.♙c5 with a draw]. 31.♞xh4
 ♙xg3 32.fxg3 [If 32.♞xh3 ♙c7 &
 33...♙xb6 wins]. 32...♗c6! [If 33.
 ♞xh3 ♗xb6+ & 34.♗xb3]. 0-1



Doornbos, Y - Hassabis, D
 FRA-ENG (G3b3), 1992

1.e4 c5 2.♖f3 ♙c6 3.d3 g6 4.g3 ♙g7
 5.♙g2 e6 6.0-0 ♗ge7 7.♞e1 d6 8.c3
 0-0 9.a4 a6 10.♗e3 h6 11.d4 cxd4
 12.cxd4 d5 13.e5 ♗b6 14.♗e2 ♖f5 15.
 ♙c3 ♙d7 16.♞ed1 ♞fc8 17.g4 ♖xe3 18.
 fxe3 ♙a5 19.e4 ♖b3 20.a5 ♗b4 21.
 exd5 ♙xa1 22.♞xa1 ♞d8 23.d6 ♙c6 24.
 ♞d1 ♗xa5 25.h4 ♗b6 26.g5 h5 27.♞d2
 a5 28.♗e4 ♙xe4 29.♗xe4 ♞ac8 30.♞f2
 ♞c4 31.♗f4 ♞d7 32.♗h2 ♗b4 0-1

Poulton, J - Gaudineau, E
 ENG-FRA (G3b4), 1992

1.d4 d5 2.♖f3 ♖f6 3.c4 c6 4.♙c3 e6
 5.cxd5 exd5 6.♗c2 ♙d6 7.♙g5 ♖bd7 8.
 e3 h6 9.♙h4 ♗c7 10.♙d3 0-0 11.0-0
 ♞e8 12.♞fc1 a6 13.♞ab1 ♙g4 14.♙g3
 ♙xg3 15.hxg3 ♖f8 16.♙xd5 ♗a5 17.♖f4
 ♖e6 18.b4 ♗d8 19.a4 ♖xf4 20.gxf4
 ♗e6 21.f5 ♙d7 22.e4 ♖f6 23.♞e1 1-0

Merant, N - Merriman, J
 FRA-ENG (G3b5), 1992

1.e4 e6 2.d4 d5 3.exd5 exd5 4.♙f4
 ♖f6 5.♙d3 ♗e7 6.♖f3 0-0 7.0-0 ♖bd7
 8.♖bd2 ♖h5 9.♗e3 f5 10.♖e5 ♖xe5 11.
 dxe5 g6 12.f4 d4 13.♙c4+ ♗h8 14.♙f2
 ♖xf4 15.♗f3 ♖e6 16.♖b3 ♙g5 17.♗e2
 c5 18.c3 dxc3 19.♞fd1 ♗c7 20.bxc3
 ♗e6 21.♙xe6 ♖xe6 22.♗c4 ♙g5 23.e6
 ♞ad8 24.♞d7 ♞xd7 25.exd7 ♗xd7 26.
 ♖xc5 ♗c6 27.♗d4+ ♙f6 28.♗d7 ♖e4 29.
 ♗xb7 ♗xb7 30.♖xb7 ♞b8 31.♙c5 ♖xf2
 32.♖d7 ♙xc3 33.♖xb8 ♖h3+ 34.gxh3
 ♙xa1 35.♙c6 ♗g7 36.♗g2 a6 37.♗f3
 ♗f6 38.h4 ♗e5 39.h3 ♙d6 40.♖d8 ♗e7
 0-1

Theissen, H - Jones, A
GER-WLS (G3b1), 1992

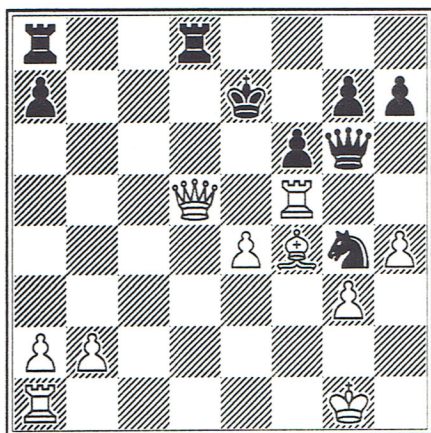
1.e4 c5 2.♁f3 ♁c6 3.♁c3 e6 4.d4
cxd4 5.♁xd4 ♁f6 6.♁e2 ♁b4 7.0-0
♁xc3 8.bxc3 ♁xe4 9.♁d3 d5 10.♁a3
♁a5 11.♁c1 ♁xc3 12.♁xc6 bxc6 13.♁d6
f6 14.♁f4 e5 15.♁fel ♁e4 16.♁xe5
0-0 17.♁d4 ♁d7 18.♁h4 ♁f5 19.♁f4
♁d7 20.♁h4 ♁f5 21.♁f4 ½-½

Fish, A - Racherbaumer, M
WLS-GER (G3b2), 1992

1.e4 e6 2.d4 d5 3.♁d2 c5 4.exd5
exd5 5.♁gf3 c4 6.c3 ♁f6 7.b3 cxb3
8.♁xb3 ♁c6 9.♁d3 ♁e7 10.0-0 ♁g4 11.
♁e1 0-0 12.♁f4 ♁e8 13.♁d2 ♁xf3 14.
gxf3 ♁h5 15.♁g3 ♁f8 16.♁c2 ♁g5 17.
f4 ♁e7 18.♁e2 ♁f6 19.♁d2 ♁e8 20.♁d3
♁d7 21.♁f3 ♁e4 22.♁e5 ♁h3 23.♁ab1
♁ac8 24.♁xe4 dxe4 25.♁xe4 ♁xe5 26.
fxe5 ½-½

Ellers, H Bacon, I
GER-WLS (G3b3), 1992

1.d4 d5 2.c4 dxc4 3.♁f3 ♁f6 4.♁a4+
♁d7 5.♁xc4 b5 6.♁c2 e6 7.e4 c5 8.
dxc5 ♁c7 9.♁c3 ♁xc5 10.♁xb5 ♁g4 11.
♁xd7+ ♁xd7 12.0-0 ♁de5 13.♁xe5 ♁xe5
14.g3 ♁h5 15.h4 f6 16.♁d5 ♁xf2+ 17.
♁xf2 exd5 18.♁c6+ ♁e7 19.♁b7+ ♁e6
20.♁f5 ♁g6 21.♁xd5+ ♁e7 22.♁f4 ♁hd8



23.♁d6+ ♁xd6 24.♁xa8 ♁e5 25.♁xa7+
♁f8 26.♁b8+ ♁f7 27.♁b3+ ♁f8 28.♁c1
♁d3 29.♁c8+ ♁e7 30.♁xe5+ fxe5 31.
♁xd3 ♁b6+ 32.♁h1 ♁f2 33.♁c7+ 1-0

Morton, R - Fischer, M
WLS-GER (G3b4), 1992

1.e4 ♁f6 2.e5 ♁d5 3.d4 d6 4.c4 ♁b6
5.f4 dxe5 6.fxe5 ♁c6 7.♁e3 ♁f5 8.

♁c3 e6 9.♁f3 ♁g4 10.♁d2 ♁e7 11.
0-0-0 ♁d7 12.h3 ♁xf3 13.gxf3 0-0-0
14.f4 ♁b4 15.a3 ♁a5 16.♁c2 ♁axc4
17.♁f2 ♁e7 18.d5 exd5 19.♁xd5 ♁xd5
20.♁xc4 ♁c6 21.♁b1 ♁b8 22.♁hg1 g6
23.f5 ♁b6 24.♁xf7 ♁xc2+ 25.♁xc2
gxf5 26.♁e3 ♁xd1 27.♁xd1 ♁d7 28.♁d4
♁d8 29.♁e2 c5 30.♁c3 b5 31.e6 ♁b6
32.♁g7 ♁c4 33.♁h5 b4 34.axb4 cxb4
35.♁xe7 bxc3 36.bxc3 a5 37.♁e8 ♁c7
38.e7 ♁d2+ 39.♁e1 ♁d5 40.♁c8+ 1-0

Ullrich, F - Rizvi, N
GER-WLS (G3b5), 1992

1.e4 ♁f6 2.e5 ♁d5 3.d4 d6 4.c4 ♁b6
5.f4 dxe5 6.fxe5 ♁c6 7.♁e3 ♁f5 8.
♁f3 e6 9.♁e2 ♁b4+ 10.♁f2 ♁d7 11.a3
♁e7 12.b4 ♁d8 13.♁bd2 0-0 14.♁b3 f6
15.b5 ♁b8 16.♁g1 ♁c8 17.exf6 ♁xf6
18.h3 ♁8d7 19.a4 c5 20.a5 cxd4 21.
♁fxd4 ♁xc4 22.♁xf5 ♁xe3 23.♁xe3 ♁c5
24.♁e1 ♁xb3 25.♁a4 ♁d4 26.♁c4 ♁d2
27.♁e2 ♁h8 28.h4 ♁c5 29.a6 ♁xc4 0-1

Jonker, M - Bathie, N
NDL-SCO (G3b1), 1992

1.e4 e6 2.d4 d5 3.♁c3 ♁f6 4.♁g5
dxe4 5.♁xe4 ♁bd7 6.♁f3 ♁e7 7.♁xf6
♁xf6 8.♁d3 ♁xe4 9.♁xe4 c5 10.c3
cxd4 11.♁xd4 a6 12.♁h5 g6 13.♁f3
♁c7 14.h4 f5 15.♁c2 e5 16.♁a4+ ♁d7
17.♁xf5 gxf5 18.♁h5+ ♁d8 19.0-0-0
b5 20.♁b3 ♁c8 21.♁xd7 ♁xd7 22.♁d1+
♁c6 23.♁d5+ ♁b6 24.♁xa8 ♁xa8 25.
♁xf5 ♁d8 26.♁e1 ♁d6 27.♁d1 ♁e7 28.
♁e4 ♁f7 29.♁d2 ♁f4 30.♁xf4 exf4 31.
g3 0-1

Roberts, P - Vedder, H
SCO-NDL (G3b2), 1992

1.e4 e6 2.d4 d5 3.♁d2 dxe4 4.♁xe4
♁d7 5.♁f3 ♁c6 6.♁d3 ♁d7 7.0-0 ♁gf6
8.♁e2 ♁xe4 9.♁xe4 ♁xe4 10.♁xe4 c6
11.♁f4 ♁f6 12.♁e2 ♁e7 13.c4 0-0 14.
♁ad1 ♁a5 15.a3 ♁ad8 16.♁fel ♁fe8
17.♁e5 c5 18.dxc5 ♁xd1 19.♁xd1 ♁xc5
20.b4 ♁c8 21.♁d3 ♁d8 22.♁d1 ♁xd3
23.♁xd3 a5 24.c5 axb4 25.axb4 ♁d5
26.♁d2 ♁a8 27.♁b1 ♁f6 28.♁d3 ♁c3
29.♁xc3 ♁xc3 30.♁b2 ♁b5 31.h3 h6
32.♁c1 ♁d8 33.♁e2 ♁c3 34.♁d3 ♁f6
35.♁e2 ♁d5 36.b5 ♁a1+ 37.♁h2 ♁e5+
½-½

GLORNEY & FABER CUPS, DUBLIN 1992 - Round 3.

v.d.Weider,V - Rowson,J
NDL-SCO (G3b3), 1992

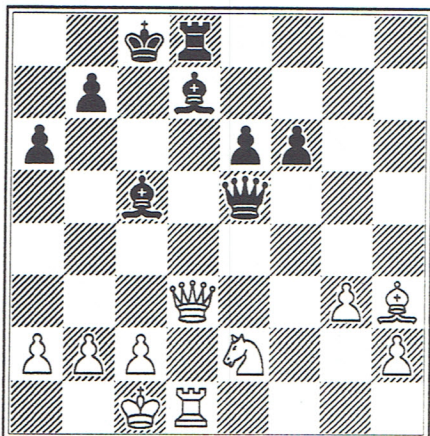
1.e4 c5 2.♗c3 ♗c6 3.g3 e6 4.♗g2 ♗f6
5.d3 ♗e7 6.f4 d5 7.e5 ♗d7 8.♗f3 b5
9.0-0 b4 10.♗e2 0-0 11.♗e3 a5 12.b3
♗a6 13.♗h3 g6 14.g4 ♗e8 15.g5 ♗f8
16.♗e1 ♗e7 17.♗g3 ♗f5 18.♗xf5 exf5
19.♗d1 ♗b6 20.♗f2 d4 21.♗d2 a4 22.
♗g2 ♗d5 23.h4 h5 24.♗h2 ♗b7 25.♗h1
♗e6 26.♗e2 axb3 27.axb3 ♗a2 28.♗c1
♗b8 29.♗g3 ♗g7 ½-½

Sanger,M - Kroeze,F
SCO-NDL (G3b4), 1992

1.e4 e5 2.♗c4 ♗f6 3.d3 ♗c5 4.♗c3
♗c6 5.♗e3 ♗b6 6.h3 d6 7.♗ge2 ♗e6 8.
♗b3 d5 9.♗xb6 axb6 10.exd5 ♗xd5 11.
0-0 0-0 12.♗xd5 ♗xd5 13.♗xd5 ♗xd5
14.♗c3 ♗d7 15.a3 ♗d4 16.♗c1 ♗fe8
17.f4 ♗a5 18.fxe5 ♗axe5 19.♗f2 ♗e7
20.♗f1 f5 21.♗h2 ♗d6 22.♗h1 g6 23.
♗f4 ♗xc2 24.♗f2 ♗e1+ 25.♗xe1 ♗xe1+
26.♗h2 0-1

Wiersma,E - Willetts,S
NDL-SCO (G3b5), 1992

1.e4 c5 2.♗f3 d6 3.d4 cxd4 4.♗xd4
♗f6 5.♗c3 ♗c6 6.♗g5 e6 7.♗d2 ♗e7 8.
0-0-0 a6 9.♗xf6 gxf6 10.f4 ♗c7 11.
♗e2 ♗d7 12.f5 0-0-0 13.fxe6 fxe6
14.♗g4 ♗xd4 15.♗xd4 ♗hg8 16.♗h3 ♗g5
17.♗e2 ♗c5 18.♗d3 d5 19.exd5 ♗xd5
20.♗xh7 ♗xd1+ 21.♗xd1 ♗c5 22.g3 ♗e5
23.♗d3



23...♗b6 24.♗f4 ♗b5 25.♗c3+ ♗xc3
26.♗xd8+ ♗xd8 27.♗xe6+ ♗e7 28.bxc3
♗g1 29.♗d4 ♗xh2 30.♗c8 b6 31.♗f5+
♗d8 32.♗e6 ½-½

Schuster,B - Verstappen,P
GER-BEL (F3b1), 1992

1.d4 ♗f6 2.c4 g6 3.♗c3 ♗g7 4.e4 d6
5.f3 0-0 6.♗e3 e5 7.d5 ♗e8 8.♗d2 f5
9.♗d3 f4 10.♗f2 ♗f6 11.♗ge2 ♗bd7
12.♗c1 ♗b6 13.b4 ♗d7 14.♗b3 a6 15.
a4 ♗c8 16.c5 g5 17.♗c4 ♗h8 18.♗a5
b6 19.♗b7 ♗e7 20.c6 ♗e8 21.♗e2 a5
22.bxa5 bxa5 23.♗a6 ♗h5 24.h3 ♗f7
25.♗b5 ♗e7 26.♗xa5 ♗ab8 27.♗b7 ♗c8
28.♗c4 1-0

Verstappen,M - Bauer,J
BEL-GER (F3b2), 1992

1.d4 ♗f6 2.c4 e6 3.♗c3 d5 4.♗g5 ♗e7
5.e3 ♗bd7 6.♗f3 0-0 7.♗d3 dxc4 8.
♗xc4 c5 9.0-0 b6 10.dxc5 ♗xc5 11.
♗xd8 ♗xd8 12.♗ad1 ♗b7 13.♗xd8+ ♗xd8
14.♗d1 ♗xd1+ 15.♗xd1 ♗ce4 16.♗f4
♗d5 17.♗xd5 ♗xd5 18.a3 ♗f6 19.♗e5
♗e7 20.♗b8 a6 21.♗f1 ♗b3 22.♗e1
♗xd1 23.♗xd1 ♗xf2+ 24.♗e2 ♗e4 25.
♗d4 ♗f8 26.♗c6 ♗d6 27.♗xe7 ♗xe7 28.
♗d3 ♗d7 29.b4 ♗c6 30.a4 f6 31.♗xd6
♗xd6 32.e4 ♗e5 33.g3 f5 0-1

Byrne,C - Muriel,R
GER-BEL (F3b3)*, 1992

1.♗f3 ♗c6 2.g3 e5 3.d3 ♗f6 4.♗g2 d5
5.0-0 h6 6.♗bd2 ♗d6 7.e4 0-0 8.♗e1
♗g4 9.h3 ♗h5 10.c3 ♗e8 11.a4 a5 12.
b3 ♗a7 13.g4 ♗g6 14.exd5 ♗xd5 15.
♗c4 ♗xc3 16.♗c2 ♗d5 17.♗fxe5 ♗xe5
18.♗xe5 ♗b4 19.♗c4 ♗xd3 20.♗xd3
♗xd3 21.♗xe8+ ♗xe8 22.♗xd3 ♗e1+ 23.
♗f1 ♗c6 24.♗b2 ♗b4 25.♗g2 ♗d8 26.
♗c3 ♗xc3 27.♗xc3 ♗d3 28.♗c1 ♗d6 29.
♗e1 ♗f8 30.♗xc6 ♗xc6 31.♗xa5 b6 32.
♗b4+ ♗g8 33.h4 ♗g6 34.f3 f5 35.h5
♗f6 36.♗e7 ♗f7 37.♗g2 fxc4 38.fxc4
♗h7 39.♗g3 g6 40.hxc4+ ♗xc4 41.♗e6+
♗g7 42.b4 ♗f1 43.a5 bxa5 44.bxa5
♗a1 45.♗f6+ ♗f7 46.♗xa1 ♗xe6 47.a6
1-0

Griffiths,K - Little,S
WLS-SCO (F3b1), 1992

1.e4 e5 2.♗c3 ♗f6 3.f4 d5 4.fxe5
♗xe4 5.♗f3 ♗g4 6.d3 ♗g5 7.♗xg5 ♗xf3
8.♗xd8 ♗xd1 9.♗xc7 ♗g4 10.♗xb8 ♗xb8
11.♗xd5 ♗c5 12.h3 ♗d7 13.c3 0-0 14.
d4 ♗fe8 15.0-0-0 ♗f8 16.♗c4 b5 17.
♗b3 ♗ec8 18.♗hf1 ♗e6 19.♗e3 ♗e7 20.
d5 ♗g5 21.dxe6 ♗xe3+ 22.♗b1 b4 23.
cxb4 ♗xb4 24.exf7+ ♗f8 25.♗d7 ♗f4
26.♗fd1 ♗b6 27.e6 ♗e4 28.♗b7 ♗e2

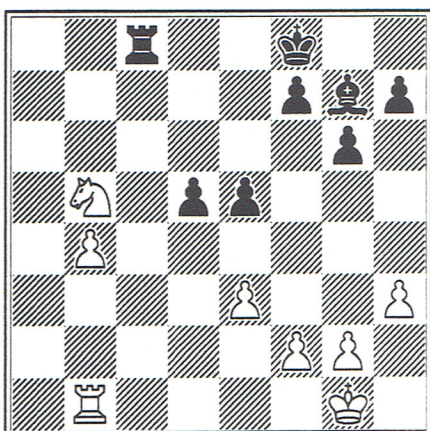
29.a3 1-0

Lang, H - Furmage, D
SCO-WLS (F3b2), 1992

1.e4 c5 2.f3 d6 3.d3 e6 4.g3 f6
5.g2 e7 6.0-0 d5 7.b2 0-0 8.e5
d7 9.e1 c7 10.e2 b5 11.f1 a6
12.h4 a8 13.f1h2 d4 14.d1 b4
15.f4 xf3+ 16.f3 c4 17.d4 c3
18.b3 b5 19.h3 b6 20.h5 fe8 21.
g5 b8 22.e3 a5 23.g4 d7 24.f4
xg5 25.fxg5 g6 26.hxg6 fxg6 27.g2
f8 28.f3 f7 29.g2 c6 30.h1
xe5 31.dxe5 xe3 32.ae1 c5 33.
h3 cf8 34.f1 e3 35.g4 xe5 36.
h4 d4 37.e1 f4 38.h3 d6 39.e2
c6+ 40.g1 c5 41.d3 e5 42.h2
e8 43.xg6 f2+ 44.f2 hxg6 45.
f6 1-0

Dyce, A - King, A
WLS-SCO (F3b3), 1992

1.d4 f6 2.f3 g6 3.f4 g7 4.h3 d6
5.e3 c5 6.c3 b6 7.a4+ d7 8.b3
xb3 9.axb3 b6 10.d3 c6 11.b2
0-0 12.0-0 fc8 13.e4 d5 14.h2
f5 15.h4 d7 16.a6 c7 17.dxc5
bxc5 18.c4 b6 19.xc5 xc4 20.
bxc4 e5 21.xe5 xe5 22.xd7 xd7
23.a5 c7 24.f3 g7 25.f1 b7
26.f5a2 c7 27.d4 b8 28.xa7 xc4
29.a8 cc8 30.xb8 xb8 31.b4 c8
32.c1 e5 33.b5 d5 34.b1 f8 35.
a3 xc3 36.b5 c8



37.d6 b8 38.b5 e7 39.f7 f7
40.b6 b7 41.d1 e6 42.c1 d6 43.
d1 xb6 44.e4 d4 45.d3 c6 46.f1
h6 47.g4 c3 48.e2 xd3 49.xd3
g5 50.c4 c6 51.f3 b6 52.b4 d3
53.c3 d2 0-1

Corry, A - Gatine, A
IRL-FRA (F3b1), 1992

1.e4 d5 2.exd5 xd5 3.c3 a5 4.d4
f6 5.f3 g4 6.h3 h5 7.e2 c6 8.
e3 0-0-0 9.d2 e6 10.0-0-0 xf3
11.f3 a5 12.xc6 bxc6 13.e2 b4
14.d2 xd4 15.b1 xd2+ 16.xd2
xd2 17.xd2 xa2 18.d1 d5 19.d3
b7 20.g3 a8 21.a3 c4 22.d2 d4
23.f3 b8 24.b3 c4 25.d3 xd3
26.xd3 b4 27.a5 c5 28.c4 f6 29.
b3 b6 30.d8+ b8 31.xb8+ xb8
32.c6+ c8 33.e5 e4 34.f7 f2
35.g5 d7 36.h4 h6 37.f7 g4 38.
d2 e7 39.h8 e5 40.e3 f6 41.h5
g5 42.g6 xg6 43.hxg6 xg6 0-1

Muller, A - Hollinger, R
FRA-IRL (F3b2), 1992

1.e4 e5 2.f3 c6 3.b5 a6 4.a4
f6 5.0-0 e7 6.e1 b5 7.b3 0-0 8.
c3 d6 9.h3 a5 10.c2 c5 11.d4 c6
12.d5 b8 13.a4 b7 14.b2 e8 15.
f1 f8 16.g3 g6 17.g5 b7 18.b4
c4 19.e2 h6 20.d2 h5 21.g5 e7
22.d2 h7 23.f1 h4 24.e2 g5 25.
h2 df6 26.g3 hxg3 27.xg3 d7 28.
f5 h5 29.g4 f6 30.h2 g7 31.
gh6+ f8 32.e2 xf5 33.f5 d8
34.h5 c7 35.g1 f7 36.h6+ g8
37.h4 f8 38.g6+ h8 39.hxg5 g8
40.gxf6 xg6 41.xg6 g8 42.ag1
xg6 43.xg6 g8 44.g7 xg7 45.
fxg7+ g8 46.a5 f7 47.f4 c8 48.
g8+ xg8 49.e7+ f7 50.xc8 exf4
51.f4 1-0

Collins, D - Coudray, C
IRE-FRA (F3b3), 1992

1.e4 c6 2.d4 d5 3.exd5 cxd5 4.d3
c6 5.c3 f6 6.f4 g4 7.f3 e6 8.
0-0 e7 9.b2 0-0 10.e1 c8 11.a3
a6 12.c2 h6 13.b1 xf3 14.f3
a5 15.c2 e8 16.e5 f8 17.e3
c6 18.e2 e4 19.xe4 dxe4 20.xe4
f6 21.g4 h8 22.h5 d5 23.e3
e7 24.d1 f5 25.e1 h4 26.f3 f5
27.d3 g8 28.ad1 fd8 29.e4 d6
30.e3 b3 31.e2 c4 32.c2 b6
33.e4 d6 34.d3 b3 35.g4 e7
36.d5 f5 37.ed2 xd5 38.e2 cd8
39.xd5 xd5 40.xd5 xd5 41.c4
d4+ 42.e3 xe3 43.xe3 xb2 44.a4
b4 45.f4 e1+ 0-1

GLORNEY & FABER CUPS, DUBLIN 1992 - Round 3.

Tichelman, I - Haslinger, C
NDL-ENG (F3b1), 1992

1.b3 ♖f6 2.♙b2 d6 3.f4 e5 4.fxe5
dxe5 5.♙xe5 ♗g4 6.♙g3 ♙d6 7.d4 ♗xh2
8.♙xh2 ♖h4+ 9.g3 ♙xg3+ 10.♙xg3 ♖xh1
11.♙f2 ♙f5 12.♖d2 ♖e4 13.♙a3 c6 14.
♙c4 0-0 15.♙d6 ♖xc2 16.♖xc2 ♙xc2
17.♙c1 ♙g6 18.♙xb7 ♙d7 19.♙g2 ♖f6
20.♙d6 ♙fd8 21.♙xc6 ♙ab8 22.d5 ♙d7
23.♙c5 ♙e8 24.e4 ♙xd6 25.♙xd6 ♙bd8
26.e5 ♙f5 27.♙c5 ♙e8 28.♙e2 h5 29.
♙d4 h4 30.♙f4 ♙g4 31.d6 f6 32.♙d5+
♖h7 33.e6 g5 34.♖f1 1-0

Ashby, A - Jacquet, I
ENG-NDL (F3b2), 1992

1.c4 ♖f6 2.♙c3 g6 3.g3 ♙g7 4.♙g2
0-0 5.d3 c6 6.e4 d6 7.♙ge2 e5 8.0-0
♙e6 9.h3 ♖d7 10.♖h2 ♙a6 11.f4 ♙ad8
12.♙e3 ♖c7 13.f5 ♙c8 14.g4 d5 15.
cxd5 cxd5 16.g5 d4 17.gxf6 ♙xf6 18.

fxg6 fxg6 19.♖b3+ ♖g7 20.♙d5 ♙xd5
21.♙h6+ ♖xh6 22.♖xd5 ♖g7 23.♙ac1
♖b6 24.♙xc8 1-0

DeLeMarre, M - Eastwood, J
NDL-ENG (F3b3), 1992

1.e4 e6 2.d4 d5 3.♙c3 ♙b4 4.exd5
exd5 5.♙d3 ♖f6 6.♙g5 0-0 7.♙ge2
♙bd7 8.0-0 c6 9.♖h1 ♙e8 10.♙g3 h6
11.♙f4 ♖f8 12.♙f5 ♙xf5 13.♙xf5 ♙g6
14.♙e3 ♙d6 15.♖d2 ♖h4 16.♙h3 ♖c7
17.g3 ♖f3 18.♖d1 ♙g5 19.♙xg5 hxg5
20.♙f5 g6 21.♙d3 ♖g7 22.♖d2 ♖d7 23.
f3 ♙h8 24.♖g2 ♖h3 25.♖xh3 ♙xh3 26.
♖g2 ♙ah8 27.♙h1 g4 28.f4 ♙e8 29.
♙ae1 ♙hh8 30.a3 ♖h5 31.f5 ♖f6 32.
fxg6 fxg6 33.♖f2 ♙hf8 34.♖g2 ♖h7
35.♙hf1 ♙xf1 36.♙xe8 ♙f7 37.♙e6 ♙f6
38.♙xf6 ♖xf6 39.♙d1 ♖g5 40.♙e3 ♖f6
½-½

You've no excuse for bare windows!

Portadown	DUBLIN	BELFAST	Ballymena
Enniskillen	HARRY CORRY CURTAINS & NETS (& Other Branches.)		Londonderry
Cookstown			Lisburn
Strabane			Newry
Coleraine			Abbeycentre

RESULTS AFTER THE THIRD ROUND

GLORNEY GROUP A

NETHERLANDS	9.5
IRELAND	8.5
SCOTLAND	8.5
BELGIUM	3.5

GLORNEY GROUP B

ENGLAND	12.0
FRANCE	9.5
GERMANY	4.5
WALES	4.0

FABER GROUP A

SCOTLAND	6.5
FRANCE	6.5
WALES	4.0
IRELAND	1.0

FABER GROUP B

NETHERLANDS	7.0
ENGLAND	5.5
GERMANY	4.5
BELGIUM	1.0

RESULTS BEFORE THE FOURTH ROUND

GLORNEY GROUP 1

ENGLAND	3.5
NETHERLANDS	3.0
IRELAND	2.0
FRANCE	1.5

GLORNEY GROUP 2

SCOTLAND	3.5
WALES	3.0
GERMANY	2.0
BELGIUM	1.5

FABER GROUP 1

SCOTLAND	2.0
NETHERLANDS	1.5
ENGLAND	1.5
FRANCE	1.0

FABER GROUP 2

WALES	2.5
GERMANY	2.0
BELGIUM	1.0
IRELAND	0.5