

GLORNEY GROUP 1
(1st - 4th)

ROUND 4

FRANCE V NETHERLANDS
ENGLAND V IRELAND

ROUND 5

NETHERLANDS V ENGLAND
IRELAND V FRANCE

GLORNEY GROUP 2
(5th - 8th)

ROUND 4

SCOTLAND V WALES
BELGIUM V GERMANY

ROUND 5

GERMANY V SCOTLAND
WALES V BELGIUM

FABER GROUP 1
(1st - 4th)

ROUND 4

SCOTLAND V ENGLAND
FRANCE V NETHERLANDS

ROUND 5

ENGLAND V FRANCE
NETHERLANDS V SCOTLAND

FABER GROUP 2
(5th - 8th)

ROUND 4

BELGIUM V WALES
GERMANY V IRELAND

ROUND 5

IRELAND V BELGIUM
WALES V GERMANY

For all your computing needs,
The Computer Shop
at
Clerys,
O' Connell St.
Dublin 1
Tel: 786000

GLORNEY & FABER CUPS, DUBLIN 1992 - Round 4.

Bathie, N - Jones, A

SCO-WLS (G4b1), 1992

1.e4 c5 2.♗c3 ♗c6 3.f4 g6 4.♗f3 ♗g7
5.d3 d6 6.♗e2= e6 7.0-0 ♗ge7 8.♗e1
♗d4 9.♗d1 ♗b8 10.♗e2 b5 11.♗fxd4
cxd4 12.♗f2 ♗c6 13.f5 exf5 14.♗g3
f4 15.♗xf4 0-0 16.♗d2 ♗e5 17.♗h6
♗e8 18.♗f2 ♗b7 19.♗e2 d5 20.exd5
♗xd5 21.♗g3 f5 22.♗f4 ♗be7 23.♗f3
♗c5 24.♗e2 ♗xf4 25.♗xf4 ♗e5 26.♗d5+
♗h8 27.♗h4 ♗g7 28.♗f6 ♗g4 29.♗c6
♗e7 30.h3 ♗d7 31.♗a6 ♗e3+ 32.♗h1
♗f2+ 33.♗xf2 ♗xf2 34.♗d6 ♗e3 35.♗f3
♗e5 36.♗xe5 ♗xe5 37.♗e2 g5 38.♗xd4
g4 39.hxg4 fxg4 40.♗e4 ♗h5+ 41.♗g1
♗f7 ½-½

Fish, A - Roberts, P

WLS-SCO (G4b2), 1992

1.e4 e6 2.d4 d5 3.♗d2 ♗c6 4.♗gf3
♗f6 5.e5 ♗d7 6.c3 f6 7.exf6 ♗xf6 8.
♗b5 ♗d6 9.0-0 0-0 10.♗b3 ♗e7 11.c4
c6 12.cxd5 cxd5 13.♗b1 ♗c6 14.♗g5
♗xd4 15.♗xd4 ♗xg5 16.♗xe6 ♗e5 0-1

Rowson, J - Bacon, I

SCO-WLS (G4b3), 1992

1.e4 c6 2.d4 d5 3.e5 ♗f5 4.♗f3 ♗d7
5.♗h4 ♗g6 6.♗xg6 hxg6 7.e6 ♗df6 8.
exf7+ ♗xf7 9.♗d2 e6 10.♗f3 ♗d6 11.
♗d3 ♗e7 12.♗e2 ♗d7 13.♗d2 ♗ae8 14.
0-0-0 ♗f5 15.c3 b6 16.♗e5+ ♗xe5 17.
dxe5 ♗h7 18.h4 c5 19.g4 ♗e7 20.h5
♗f8 21.hxg6+ ♗fxg6 22.♗f3+ ♗g8 23.
♗xh8+ ♗xh8 24.♗h3 ♗hg6 25.♗h5 ♗f7
26.f4 ♗h8 27.♗g5 c4 28.♗c2 a5 29.f5
exf5 30.♗e1 ♗c6 31.gxf5 ♗f8 32.e6+
♗e8 33.♗xg7 ♗h7 34.♗g3 ♗h8 35.f6
♗c8 36.f7+ ♗d8 37.♗g5+ ♗e7 38.♗b8+
1-0

Morton, R - Sanger, M

WLS-SCO (G4b4), 1992

1.e4 e6 2.d4 d5 3.♗d2 ♗f6 4.e5 ♗fd7
5.♗d3 c5 6.c3 ♗c6 7.♗gf3 cxd4 8.
cxd4 f5 9.♗b3 ♗e7 10.a3 0-0 11.♗c2
♗db8 12.h3 h6 13.g4 ♗h7 14.h4 b6
15.♗e2 a5 16.g5 ♗g8 17.♗g1 a4 18.
g6+ ♗h8 19.♗g5 ♗f8 20.♗f7+ ♗xf7 21.
gxf7 ♗f8 22.♗h5 ♗e7 23.♗e2 axb3 24.
♗xg7 1-0

Willetts, S - Rizvi, N

SCO-WLS (G4b5), 1992

1.d4 d5 2.c4 e6 3.♗c3 c5 4.cxd5
cxd4 5.♗xd4 ♗c6 6.♗d1 exd5 7.e3 ♗f6

8.♗f3 ♗d6 9.♗d3 0-0 10.0-0 ♗e8 11.
♗b5 ♗b8 12.h3 a6 13.♗bd4 ♗d6 14.♗b1
♗e4 15.♗e1 ♗g6 16.♗f1 ♗d7 17.♗e2
♗e6 18.♗f4 ♗xf4 19.exf4 ♗ad8 20.♗d4
♗xd4 21.♗xd4 ♗f5 22.g4 ♗g3+ 23.fxg3
♗xe1+ 24.♗xe1 ♗xb1 25.f5 ♗e8+ 26.
♗f2 ♗c6 27.♗d2 ♗e4 28.♗c3 ♗xc3 29.
♗xc3 ♗c2 ½-½

Parker, J - Quinn, M

ENG-IRL (G4b1), 1992

1.d4 ♗f6 2.c4 e6 3.♗c3 ♗b4 4.♗g5 h6
5.♗h4 c5 6.d5 d6 7.e3 ♗xc3+ 8.bxc3
e5 9.♗d3 ♗a5 10.♗e2 ♗bd7 11.f4 e4
12.♗c2 ♗g4 13.♗xe4 ♗b6 14.h3 f5 15.
♗f3 ♗xe3 16.♗d3 ♗exc4 17.♗h5+ ♗d7
18.0-0 ♗c7 19.♗g6 ♗a4 20.♗g3 ♗d7
21.♗xf5 ♗af8 22.♗ae1 ♗c8 23.♗xg7
♗b8 24.♗e6 ♗e5 25.♗xe5 dxe5 26.♗xc5
♗b5 27.♗xd7+ ♗xd7 28.fxe5 ♗xf1+ 29.
♗xf1 ♗g8 30.d6 ♗b6 31.♗e4 ♗e6 32.
♗f6 ♗xa2 33.♗g1 ♗b2 34.♗f3 ♗b3 35.
♗xb7 ♗d7 36.♗d5 ♗b1+ 37.♗h2 ♗f8 38.
e6 ♗xf6 39.e7 ♗e8 40.♗xf6 ♗b6 1-0

Gillen, A - Ansell, S

IRL-ENG (G4b2), 1992

1.e4 c5 2.f4 ♗c6 3.♗f3 g6 4.♗b5 ♗g7
5.♗xc6 dxc6 6.d3 ♗f6 7.0-0 0-0 8.
♗e1 ♗g4 9.♗h1 ♗e8 10.♗c3 ♗c7 11.♗g1
♗d7 12.♗ce2 f5 13.e5 ♗e6 14.♗f3 ♗c7
15.♗h4 ♗e8 16.h3 ♗d8 17.♗e3 ♗d7 18.
d4 cxd4 19.♗exd4 ♗xd4 20.♗xd4 ♗f7
21.♗f3 ♗d5 22.b3 c5 23.c4 ♗xf3 24.
♗xf3 e6 25.♗ff1 ♗fd8 26.♗f2 b6 27.
♗f3 ♗d3 28.♗ae1 ♗d7 29.g4 ♗f8 30.g5
♗d8 31.h4 a5 32.♗f2 a4 33.bxa4 ♗xa4
34.♗b2 ♗xc4 35.♗xb6 ♗xa2 36.♗d6
♗8xd6 37.exd6 ♗xd6 38.♗e2 ♗d5 0-1

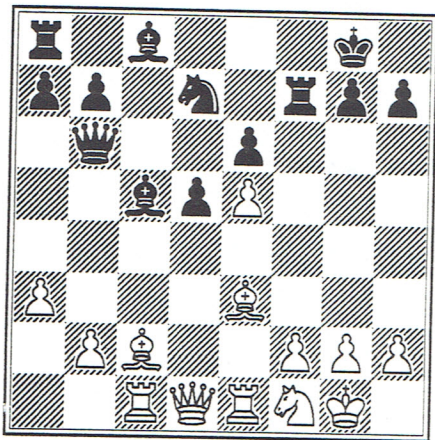
Hassabis, D - Gillen, S

ENG-IRL (G4b3), 1992

1.d4 ♗f6 2.♗f3 e6 3.g3 d5 4.♗g2 ♗e7
5.0-0 b6 6.♗e5 ♗b7 7.c4 0-0 8.cxd5
♗xd5 9.♗c3 ♗xg2 10.♗xg2 c5 11.dxc5
♗xc5 12.♗g5 ♗d4 13.♗xf6 gxf6 14.♗d3
♗xc3 15.bxc3 ♗d5+ 16.♗g1 e5 17.♗a4
♗c6 18.♗h4 ♗d6 19.♗e1 ♗e7 20.e4 ♗g6
21.♗g4 ♗e6 22.♗f3 ♗fd8 23.♗g2 ♗d2
24.♗e3 ♗d3 25.c4 ♗ad8 26.♗fd1 ♗e7
27.♗e2 ♗xd1+ 28.♗xd1 ♗xd1+ 29.♗xd1
f5 30.♗d8+ ♗g7 31.exf5 ♗f6 32.♗d7
a5 33.h3 e4 34.♗g4 ♗a1+ 35.♗g2 ♗g8
36.♗d2 h6 37.f6+ ♗g6 38.♗f4 ♗d4 39.
♗e5+ ♗h7 40.♗f5+ 1-0

Peart, A - Poulton, J
IRE-ENG (G4b4), 1992

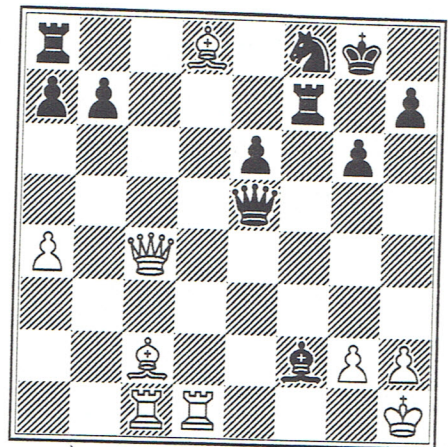
1.e4 e6 2.d4 d5 3.♘d2 ♘f6 4.e5 ♘fd7
5.♘d3 c5 6.c3 ♘c6 7.♗gf3 f5 8.0-0
[8.ef ♘f6 9.0-0 is the recommended
line]. 8...♗e7 9.♖e1 0-0 10.♙f1
cxd4 11.cxd4 ♖b6 12.a3 ♘xd4?
[Opening up the game for the White
bishops]. 13.♘xd4 ♖xd4 14.♗xf5! ♖b6
[Of course not 14...♖xd1 15.♗xe6+
♗h8 16.♗xd1 ♗xe5 17.♘xd5 leaving
white a pawn up]. 15.♗e3 [If 15.
♗c2 then 15...♖xf2+ 16.♗h1 ♗c5 17.
♗e3 ♗xe5 18.♖f1 ♗g4! or 17.♗e3 ♗xe3
18.♗xe3 ♗xe5 and black is close to
winning]. 15...♗c5 16.♗c2 ♖f7 17.
♖c1!?



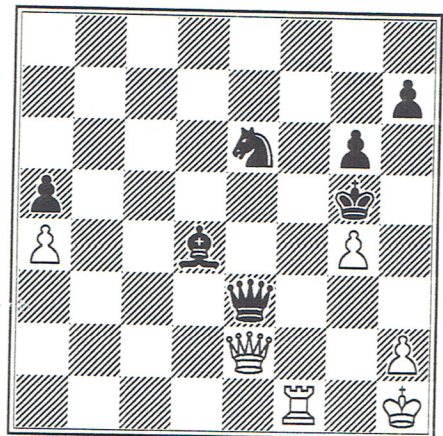
[17.b4! looks much better, eg.,
17...♗xe3 18.♖xe3 with a King's-
side attack]. 17...d4! 18.♗g5 d3 19.
♖xd3 ♗xf2+ 20.♗h1 ♘f8 21.♖ed1 ♘d7
[Finally, Black's ♖-side comes
alive]. 22.♗e3 ♗b5 [If 22...h6 23.
♗c4 ♗e3 & ♗d6]. 23.♗c4 ♗xc4 24.
♖xc4 ♖xb2 25.a4? [Better is 25.♖e2
♖xa3 26.♖f1 ♗b6 27.♖xf7 ♗xf7 28.
♖f1+ ♗g8 29.♖h5 with a tremen-
dous attack, so 25...♖b6 26.♖d6 ♖a5 27.
♖f1, with reasonable counterplay].
25...♖xe5 26.♗d8 ♗g6?

(diagram)

[Why weaken the long diagonal?]. 27.
♗b3 a5! [Stopping any future hope
for White of ♗a5. 27...♗b6 also
looks good]. 28.♗c7 ♖h5 29.♖e4 ♖c8
30.♗xe6 ♖cxc7! 31.g4! ♖h3 32.♖xc7
♗xe6 33.♖xf7 ♖xf7 34.♖xb7+ ♖f6
[Black has ♗&♗ for ♖, with both ♖'s



exposed. However, White's ♖ is tied
to the first rank giving Black an
extra piece in effect]. 35.♖b2+ ♗d4
36.♖e2 ♖e3 37.♖f1+ ♗g5?



38.♖g2? [Missing 38.h4+! ♖xh4 39.
♖xe3 ♗xe3 40.♖e1 with a draw].
38... ♘f4 [Black moves in for the
kill]. 39.♖c2 ♖xg4 40.♖c8+ ♖h5 41.
♖b7 h6 42.♖a8 ♖h4 43.♖c6 h5 44.♖c2
g5 45.♖f5 ♗e5! [If 45...♖e2?? 46.
♖xf4 wins, or 45...♖d2 46.♖xf4+
♖xf4 47.♖h3 draw [46...gf 47.♖g5+
draws]]. 46.♖c2 ♗g4 47.♖c6 ♖e2 48.
♖c1 ♗d3 0-1

Merriman, J - Darby, C
ENG-IRL (G4b5), 1992

1.d4 ♘f6 2.c4 ♗g6 3.♗c3 ♗g7 4.e4 d6
5.f3 0-0 6.♗e3 e5 7.d5 c6 8.♘d3
♗bd7 9.♗ge2 c5 10.♖d2 a6 11.g4 ♖b8
12.♗g3 ♖c7 13.a4 ♖d8 14.h4 ♘f8 15.
h5 ♘d7 16.♗h6 ♗e8 17.♖g1 ♗c8 18.♖g2
b6 19.♖f2 ♖b7 20.♖ag1 ♘d7 21.♗xg7
♗xg7 22.hxg6 fxg6 23.♘f5 ♗e8 24.

GLORNEY & FABER CUPS, DUBLIN 1992 - Round 4.

♖h6+ ♖h8 25.b3 ♖e7 26.♖e2 g5 27.♗f5
 ♖f6 28.♞h2 ♗g6 29.♞gh1 ♗f4+ 30.♖e3
 ♗g6 31.♞h6 ♖g8 32.♗e2 ♖f7 33.♖f2
 ♗e8 34.♗xf4 gxf4 35.♗h4 ♖g7 36.♗xg6
 hxg6 37.g5 1-0

Guadalpi, D - Jonker, M
 FRA-NDL (G4b1), 1992

1.e4 d6 2.d4 ♗f6 3.♗c3 c6 4.f4 ♖a5
 5.♗d3 e5 6.♗f3 ♗g4 7.♗e3 exd4 8.
 ♗xd4 ♖b4 9.♗e2 ♗xe4 10.♗g5 ♗xg5 11.
 a3 ♖a5 12.♗xg4 ♗e6 13.♖e2 ♖a6 14.
 ♖e3 ♖c4 15.0-0-0 c5 16.f5 cxd4 17.
 ♖e4 ♗e7 18.fxe6 ♗c6 19.exf7+ 1-0

Vedder, H - Goldgewicht, L
 NDL-FRA (G4b2), 1992

1.e4 e6 2.d4 d5 3.♗c3 ♗f6 4.e5 ♗fd7
 5.f4 c5 6.♗f3 ♗c6 7.♗e3 cxd4 8.♗xd4
 ♗c5 9.♖d2 ♗xd4 10.♗xd4 ♗xd4 11.♖xd4
 ♖b6 12.♗b5 ♖xd4 13.♗xd4 ♖e7 14.♖d2
 f6 15.♞e1 fxe5 16.fxe5 ♗c5 17.♗d3
 ♗d7 18.♞hf1 ♗e8 19.♞f3 ♗g6 20.♞ef1
 ♞af8 21.♞xf8 ♞xf8 22.♞xf8 ♖xf8 23.
 b4 ♗xd3 24.cxd3 ♗a6 25.♗xe6+ ♖e7
 26.b5 ♗b4 27.♗xg7 ♗xa2 28.d4 a6 29.
 bxa6 bxa6 30.♗h5 ♗b4 31.♗f4 ♖d7 32.
 ♖c3 a5 33.g4 ♖e7 34.h4 h6 35.h5 ♖f7
 36.♗g2 ♗c6 37.♗e3 ♖e6 38.♗f5 a4 39.
 ♗xh6 a3 40.♗f5 1-0

Doornbos, Y - v.d.Weide, K
 FRA-NDL (G4b3), 1992

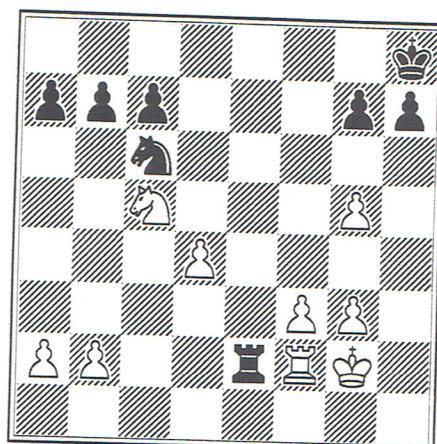
1.e4 e6 2.d4 d5 3.♗c3 dxe4 4.♗xe4
 ♗d7 5.♗f3 ♗gf6 6.♗xf6+ ♗xf6 7.♗b5+
 ♗d7 8.♗d3 c5 9.dxc5 ♗xc5 10.♗g5 ♖c7
 11.♖e2 ♗b4+ 12.♗d2 ♗c6 13.c3 ♗d6
 14.♗xf6 gxf6 15.♗e4 0-0-0 16.0-0-0
 ♗f4 17.g3 ♗xd2+ ½-½

Kroeze, F - Gaudineau, E
 NDL-FRA (G4b4), 1992

1.e4 e5 2.♗f3 ♗c6 3.♗b5 ♗c5 4.c3 d5
 5.d4 exd4 6.cxd4 ♗b4+ 7.♗d2 ♗xd2+
 8.♗bxd2 ♗ge7 9.0-0 0-0 10.e5 ♗g4
 11.♗b3 f6 12.exf6 ♞xf6 13.♗e2 ♗g6
 14.♗e5 ♗xe2 15.♖xe2 ♗f4 16.♖e3 ♖e8
 17.g3 ♗h3+ 18.♖g2 ♞h6 19.♗g4 ♞e6
 20.♖f3 ♗g5 21.♖xd5 ♖h5 22.h4 ♖xg4
 23.hxg5 ♞d8 24.♖c4 ♖h8 25.♞ae1 ♞de8
 26.f3 ♖f5 27.♞xe6 ♖xe6 28.♖xe6 ♞xe6
 29.♗c5 ♞e2+ 30.♞f2

(diagram)

30...♞xf2+ 31.♖xf2 ♗d8 32.d5 ♖g8



33.♗e6 ♗f7 34.♗xc7 ♗xg5 35.♗b5 a6
 36.♗d6 b5 37.f4 ♗f7 38.♗xf7 ♖xf7
 39.♖e3 ♖e7 40.b4 ♖d7 41.♖e4 ♖d6 1-0

Merand, N - Wiersma, E
 FRA-NDL (G4b5), 1992

1.e4 e6 2.d4 d5 3.exd5 exd5 4.♗f4
 ♗d6 5.♗xd6 ♖xd6 6.c3 ♗e7 7.♗d3 ♗f5
 8.♗e2 ♗bc6 9.0-0 0-0 10.♗g3 ♗xd3
 11.♖xd3 ♖g6 12.♖xg6 hxg6 13.♗a3 ♗d8
 14.♞ae1 ♗e6 15.♗b5 ♞fc8 16.f4 a6
 17.♗a3 c6 18.f5 gxf5 19.♗xf5 ♗xf5
 20.♞xf5 ♞e8 21.♗c2 f6 22.h4 ♖f7 23.
 ♞e2 ♗c7 24.♞ef2 ♗b5 25.g4 ♗d6 26.
 ♞5f3 ♖g6 27.♗e3 ♞e4 28.♞g2 ♞ae8 29.
 ♗f5 ♗xf5 30.gxf5+ ♖h6 31.♞g6+ ♖h7
 32.♞fg3 ♞e7 33.♞6g4 ♞e1+ 34.♖h2
 ♞b1 35.♞g2 ♖h8 36.♞f2 ♞a1 37.a3
 ♞ee1 38.♞gg2 ♖g8 39.♖g3 ♖f7 40.♞e2
 ♞ab1 41.♖f3 ♞h1 42.♖g4 ♞be1 43.♖g3
 ♖g8 44.♞xe1 ♞xe1 45.♖f3 ♖h7 46.♞e2
 ♞b1 47.♖g3 a5 48.♖f3 b5 49.♖f4 b4
 50.axb4 axb4 51.cxb4 ½-½

Claesen, J - Theissen, H
 BEL-GER (G4b1), 1992

1.e4 c5 2.c3 d6 3.♗f3 ♗f6 4.e5 dxe5
 5.♗xe5 ♗e6 6.d4 ♗bd7 7.♗xd7 ♖xd7 8.
 ♗a3 ♖d5 9.♗b5 ♖c6 10.dxc5 a6 11.♗d4
 ♖e4+ 12.♗e3 ♗d7 13.♗f3 e5 14.♗g5
 ♖d5 15.♖xd5 ♗xd5 16.♗c4 ♗xe3 17.
 fxe3 ♗xc5 18.♗xf7 ♞f8 19.♗xe5 ♗xe3
 20.♞d1 ♞d8 21.♞f1 ♞xf1+ 22.♖xf1 ♗f4
 23.♞e1 ♖f8 24.♖g1 ♗f5 25.♞f1 ♗xe5
 26.♞xf5+ ♗f6 27.♞d5 ♞xd5 28.♗xd5 b6
 29.♖f2 ♖e7 30.♖e3 ♖d6 31.♖e4 a5 32.
 ♗f7 ♖c5 33.♖d3 ♗e5 34.h3 ♗f4 35.♗e8
 ♗c1 36.♖c2 ♗f4 37.a3 ♖d5 38.b4 axb4
 39.cxb4 ♗e3 40.a4 ♗f2 41.a5 ♖c4 42.
 axb6 ♗xb6 43.b5 ♗d8 44.♖d2 ♖c5 45.

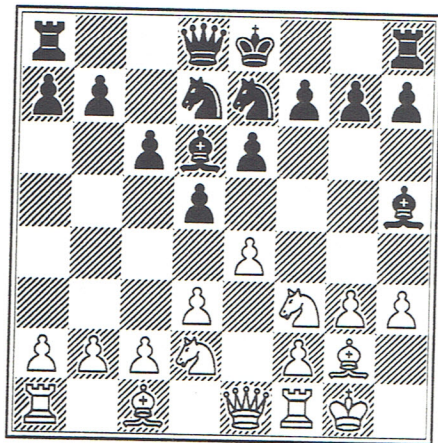
♖d3 h6 46.♗e4 ♘f6 47.♗f5 ♘c3 48.♗e6
 ♘f6 49.♘c6 ♘b2 50.♖d7 ♘e5 51.♖d8
 ♗b6 52.♗c8 ♘f6 53.g4 ♘g5 54.♖d7 ♘f6
 55.♗e6 ♘c3 56.♗f7 ♘f6 57.♗g6 ♘c3
 58.h4 ♘d4 59.g5 hxg5 60.♗xg5 ♘f6+
 61.♗g4 ♘c3 62.♗f5 ♘f6 63.h5 ♘b2 64.
 ♗g6 ♘d4 65.♗f5 ♘b2 ½-½

Racherbaumer, M - Goossens, E
 GER-BEL (G4b2), 1992

1.d4 ♘f6 2.♘f3 d6 3.c4 g6 4.♘c3 ♘g7
 5.e4 0-0 6.♘e2 e5 7.0-0 ♘c6 8.♘e3
 ♘g4 9.♘g5 f6 10.♘c1 ♗h8 11.dxe5
 ♘gxe5 12.♘e3 ♘xf3+ 13.♘xf3 ♘e5 14.
 ♘e2 ♘e6 15.b3 f5 16.exf5 gxf5 17.f4
 ♘c6 18.♞c1 ♗e7 19.♘f2 ♞ae8 20.♘f3
 ♞g8 21.♞e1 ♖d7 22.♘b5 ♘f7 23.♞xe8
 ♞xe8 24.♘d4 ♘xd4 25.♘xd4 ♗e7 26.
 ♘xg7+ ♗xg7 27.♖d4+ ♗g8 28.g3 b6 29.
 ♘c6 ♗e3+ 30.♗xe3 ♞xe3 31.♗f2 ♞e7
 32.♞e1 ♞xe1 33.♗xe1 ♗g7 34.♗f2 a5
 35.h3 ♗f6 36.g4 h6 37.♗e3 ♘e6 38.
 ♗f3 ♘c8 39.♗g3 ♘e6 40.♗h4 ♘f7 41.
 ♗g3 ½-½

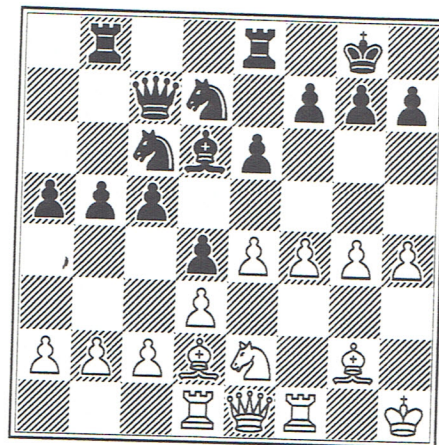
Soetewey, S - Ellers, H
 BEL-GER (G4b3), 1992

1.♘f3 d5 2.g3 c6 3.♘g2 ♘g4 4.d3 e6
 5.h3 ♘h5 6.♘bd2 ♘d6 7.e4 ♘d7 8.0-0
 ♘e7 9.♗e1

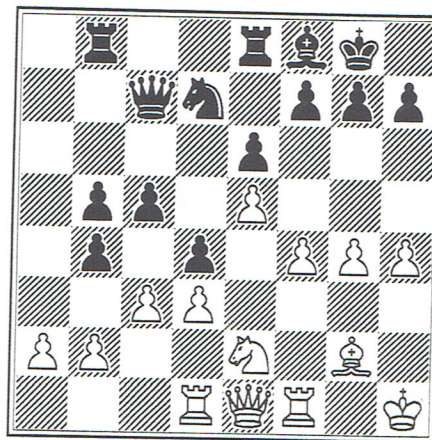


9... ♘xf3 [An unusual move, giving white the two bishops for no apparent reason. Normal is 9...0-0 10.b3 a5 11.a3 b5=]. 10.♘xf3 ♗c7 11.♘e3 [This piece is normally situated on b2 in this variation. On e3 it may come under attack from an eventual d4 by Black]. 11...0-0 12.♘d4 [Getting out of the way of the f-pawn, but now Black can gain

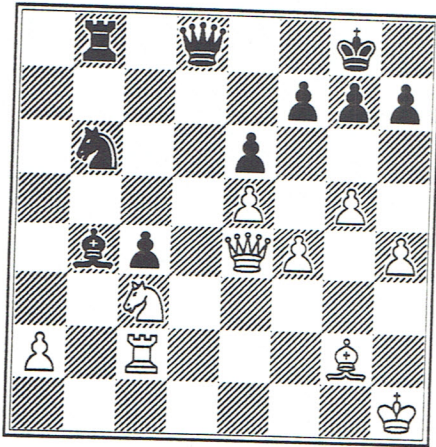
2 tempi on Q-side expansion by c5 & d4]. 12...a5 13.♗h1 [Why?]. 13... ♞fe8 [13...b5 seems more to the point]. 14.♞d1 ♞ab8 15.h4 b5 16.♘e2 c5 17.f4 d4 18.♘d2 ♘c6 19.g4



[Who stands better here? I would say Black, as [1].He can force open files on the Q-side, [2].White has denuded his King of pawn protection in order to form threats on the K-side where Black has no weaknesses. [3].Black leads in attack] 19... ♘b4! 20.♘xb4 axb4 21.e5 ♘f8 22.c3?



(This opens up the ♗-side for Black. 22.♗f2 is better). 22...bxc3 23.bxc3 dxc3 24.♘xc3 c4 25.dxc4 (If 25.d4 b4!, and a black passed pawn makes it to the seventh rank unabated) . 25...bxc4 26.♗e4 ♞ed8 27.♞d4 ♘b6 28.♞fd1 ♘c5 29.♞d2 (29. ♘b5 ♗e7). 29...♞xd2 30.♞xd2 ♘b4 31. ♞c2 ♖d8 32.g5



32...♖d3! (The ♖ cannot be taken:
33.♗xd3?? cd 34.♞c1 d2 wins). 33.
♗b5 ♗g3 (The ♗-side is
indefensible). 34.♞f1 ♗d5 (Not
34...♗xh4 35.♞h2 ♗g4 36.♗xh7+ ♗f8
37.♗e4 and white is back in the
game). 35.♞xc4 ♗e3 36.♞e2 ♗c5 37.
♞xe3 (Black was threatening 37...
♗h3+ 38.♗g1 ♗g4+). 37...♞xe3 (There
is no defence, e.g., 38.♗g2 ♗xh4
39.♗h2 ♗xh2 40.♗xh2 ♞xf4 41.♗g2
♞xe5 wins). 38.♞f1 ♗g1+ 0-1] % [19]

Fischer, M-Maas, T GER-BEL [G4b4],
1992 1.e4 c5 2.♗c3 ♗c6 3.g3 g6 4.
♞g2 ♞g7 5.d3 e6 6.f4 d6 7.♗f3 ♗ge7
8.0-0 0-0 9.♞e3 ♞b8 10.♗d2 b5 11.d4
b4 12.♗e2 cxd4 13.♗exd4 ♗c7 14.♞f2
♗a5 15.♞f1 ♗c4 16.♞xc4 ♗xc4 17.e5
dxe5 18.fxe5 ♞d8 19.♞g5 ♞d7 20.♗f4
♗d5 21.♗h4 ♗c5 22.♞h6 ♞xh6 23.♗xh6
♗f8 24.♗h4 ♗g7 25.♞g5 ♞a6 26.♞e1
♞c8 27.♗e4 ♞c4 28.♗f6+ ♗xf6 29.exf6
♗f8 30.♞d2 h5 31.♞e5 ♗h6 32.♞d1
♞xc2 33.♞g5 ½-½

De Wachter, S - Ullrich, F
BEL-GER (G4b5), 1992
1.d4 d5 2.♗f3 ♗f6 3.e3 e6 4.♞d3 ♞d6
5.♗bd2 ♗bd7 6.0-0 0-0 7.♞e1 c5 8.c3
cxd4 9.exd4 ♞b8 10.♗e5 ♗c7 11.f4 b5
12.♞e3 b4 13.♞h3 g6 14.♞c2 ♗b6 15.
♗e1 bxc3 16.bxc3 ♞e8 17.♗df3 ♗e4
18.♗xd7 ♞xd7 19.♗e5 ♞c8 20.♗h4 h5
21.♞xe4 dxe4 22.g4 ♞e7 23.♗g3 hxg4
24.♗xg4 ♗g7 25.♞g3 ♞h8 26.♞g2 ♞b7
27.♞e3 ♞c7 28.c4 ♞h4 29.♗g3 ♞h6 30.
♞e1 ♞h4 31.♗g4 ♞xe1 32.f5 exf5 33.
♞xh6+ ♗xh6 34.♗d1 ♞h4 35.c5 ♗b4 36.
♗c1+ ♗g7 37.♗d1 ♗e1+ 38.♗xe1 ♞xe1
39.♞c2 ♞e6 40.a3 f6 41.♗c4 0-1

Schuster, B - Corry, A
GER-IRL (F4b1), 1992

1.d4 ♗f6 2.c4 c5 3.d5 b5 4.cxb5 a6
5.♗c3 axb5 6.e4 b4 7.♗b5 d6 8.♞f4
♗bd7 9.♗f3 ♗b6 10.♞d3 g6 11.0-0 ♞g7
12.♗e2 0-0 13.♞g3 ♗e8 14.♞fd1 ♗c7
15.e5 ♗xb5 16.♞xb5 ♞d7 17.♞xd7 ♗xd7
18.b3 ♗c7 19.♞ac1 ♞fd8 20.e6 f6
21.♞c2 ♗b7 22.♗e4 f5 23.♗d3 ♗a6 24.
♞h4 ♗xd3 25.♞xd3 ♞a7 26.♗f1 h6 27.
♞g3 ♞da8 28.♞h4 ♗h7 29.♗f3 ♞xa2 30.
♞xa2 ♞xa2 31.♞d1 g5 32.h4 f4 33.♞h2
g4 34.♗e1 ♞d4 35.♗d3 ♗xd5 36.h5 g3
37.♞g1 gxf2 0-1

Hollinger, R - Bauer, J
IRL-GER (F4b2), 1992

1.e4 e5 2.♗f3 ♗c6 3.d4 exd4 4.♞c4
♞c5 5.0-0 ♗ge7 6.♞g5 d6 7.♗b5 ♞d7
8.♞xc6 ♞xc6 9.♞e1 0-0 10.♗xd4 ♗d7
11.♞xe7 ♗xe7 12.♗c3 ♞fe8 13.♗xc6
bxc6 14.♗f3 ♗e5 15.♗a4 ♗b6 16.♗c3
♗xc3 17.♗xc3 ♞a5 18.♞ab1 ♞ab8 19.f3
h6 20.♞e3 ♗b6 21.♗f2 f5 22.g3 fxe4
23.fxe4 d5 24.♗e2 ♞xe3 25.♗xe3 dxe4
26.♗xe4 ♞b4 27.♞d1 ♞exe4+ 28.♗f3
♞bd4 29.♞f1 ♞e5 0-1

Byrne, C - Collins, D
GER-IRL (F4b3)*, 1992

1.♗f3 d5 2.g3 ♗c6 3.d3 e5 4.♞g2 ♞e6
5.0-0 f6 6.♗bd2 ♗d7 7.e4 dxe4 8.
dxe4 0-0-0 9.♞e1 h5 10.h4 ♞e7 11.
♗e2 g5 12.♗h2 gxh4 13.♗xh4 ♗h6 14.
♞h1 ♗g4+ 15.♗g1 ♞c5 16.♗f1 ♞xf2 17.
♞f3 ♞xg3 18.♗g2 ♞xh4 19.♞xh4 ♗d4
20.♗d3 ♗xc2 21.♗xd7+ ♞xd7 22.♞b1
♞g7 23.♞xg4 ♞xg4+ 24.♞xg4 hxg4 25.
b3 ♞g8 26.♗f1 ♗d4 27.♞e3 ♗b5 28.♞g3
b6 29.♞f1 ♞f8 30.♗h5 ♗c3 31.♗xf6
♗xa2 32.♞f2 ♗c3 33.♞f1 g3 34.♞d2
♗e2 35.b4 ♗c4 36.♞d1 ♞xf6 37.♞g5
♞f2+ 38.♗h3 g2 39.♞e3 ♞f3+ 40.♗xg2
♞xe3 0-1

Gatine, A - Tichelman, I
FRA-NDL (F4b1), 1992

1.e4 g6 2.d4 ♞g7 3.♞e3 d6 4.♞e2 c6
5.♗c3 e5 6.d5 f5 7.exf5 ♞xf5 8.g4
♞c8 9.♗e4 ♗f6 10.♗xf6+ ♞xf6 11.♗d2
e4 12.0-0-0 c5 13.f3 exf3 14.♗xf3
♞xg4 15.♞g5 ♞f5 16.♞b5+ ♗d7 17.♗e6
♗b6 18.♗e2 ♗f7 19.♞hf1 a6 20.♞xf5
gxf5 21.♞g5+ ♗f8 22.♗h5 ♗e5 23.♞d7
h6 24.♗e6+ ♗e7 25.♗xf5 ♗xd7 26.♗xc5
♗xb2+ 27.♗d2 ♗c3+ 28.♗c1 ♗xe3+ 29.

♖b1 ♗xc5 0-1

Jaquet, I - Muller, A

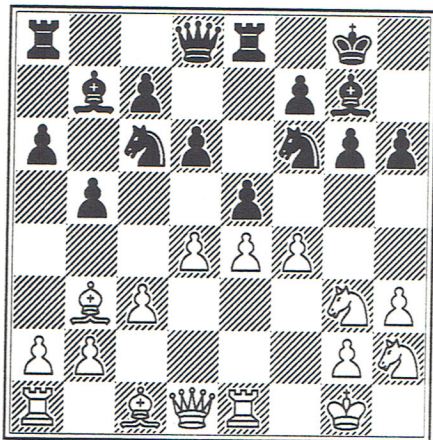
NDL-FRA (F4b2), 1992

1.e4 c5 2.♗f3 d6 3.d4 cxd4 4.♗xd4
 ♗f6 5.♗c3 a6 6.f4 e5 7.♗f3 ♖c7 8.
 ♗d3 ♗e7 9.0-0 ♗e6 10.♖h1 ♗bd7 11.f5
 ♗c4 12.♗e3 0-0 13.♗g1 b5 14.a3 ♗fd8
 15.g4 d5 16.♗xc4 ♖xc4 17.g5 ♗xe4
 18.♖xd5 ♖xd5 19.♗xd5 ♗xg5 20.♗f3
 ♗xe3 21.♗xe3 f6+ 22.♗ad1 ♗b6 23.b3
 ♗xd1 24.♗xd1 ♗d8 25.♖g1 ♗d2 26.♗xd2
 ♗xd2 27.♗e3 ♖f7 28.♗c1 g6 29.c4
 bxc4 30.bxc4 gxf5 31.♗xf5 ♗d3 32.c5
 ♗d5 33.c6 ♗c7 34.a4 ♖e6 35.♗g3 ♗d4
 36.a5 ♗d5 37.♗e4 ♗xa5 38.♗c5+ ♖d5
 39.♗d7 f5 40.♗b6+ ♖d4 41.♗d7 e4 42.
 ♗d1+ ♖e3 43.♗b8 f4 0-1

Coudray, C - DeLeMarre, M

FRA-NDL (F4b3), 1992

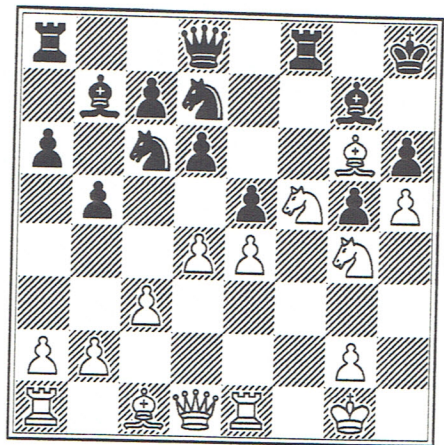
1.e4 e5 2.♗f3 ♗c6 3.♗b5 a6 4.♗a4
 ♗f6 5.0-0 b5 6.♗b3 ♗e7 7.♗e1 0-0 8.
 c3 d6 9.h3 ♗b7 10.d4 h6 [10...♗e8
 is the main line]. 11.♗bd2 ♗e8 12.
 ♗f1 ♗f8 13.♗g3 g6 14.♗h2 ♗g7 15.f4



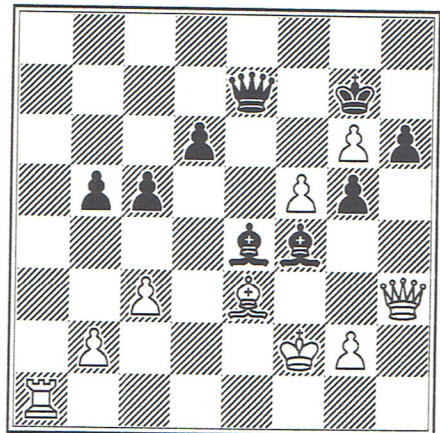
15...♖e7 [15...ef giving up the
 centre is weak]. 16.f5 ♖h7 17.h4
 ♗d7 18.fxg6+ fxg6 19.h5 g5 [19...
 ♖h4 20.hg+ ♖xg6 21.♗f5 wins]. 20.
 ♗f5 ♖d8 [If 20...♖f8 21.♖f1 ♗f6 22.
 ♗g4±]. 21.♗f7 ♗f8 22.♗g6+ ♖h8 23.
 ♗g4

(diagram)

23...♗xf5 [Otherwise the h-pawn is
 lost, and Black's ♖ open for
 attack]. 24.exf5 ♗e7 25.dxe5 ♗xg6
 26.hxg6 ♗xe5 27.♗xe5 ♗xe5 28.♗e3



♖f6 29.♖g4 c5 30.♗f1 ♗e8 31.♗ae1
 ♗d5 32.a4 ♗a8 33.axb5 axb5 [White
 opens up the a-file to invade]. 34.
 ♗a1 ♗e8 35.♖h3 ♖g7 36.♗a7+ ♗e7 37.
 ♗xe7+ ♖xe7 38.♗a1 ♗e4 39.♖g4 ♗d5
 40.♖h3 ♗e4 41.♖f2 ♗f4??



[Black should not have swopped off
 either of his bishops]. 42.♗xf4 gxf4
 43.♖g4 ♖e5 44.♗a7+ ♖g8 45.f6 ♗b7
 46.♗a8+! [If 46...♗xa8 47.♖c8
 mates]. 1-0

Verstappen, P - Griffiths, A

BEL-WLS (F4b1), 1992

1.e4 c5 2.♗f3 ♗c6 3.d4 cxd4 4.♗xd4
 ♗f6 5.♗c3 e5 6.♗b3 ♗b4 7.f3 ♗xc3+
 8.bxc3 0-0 9.♗c4 a6 10.♗g5 h6 11.
 ♗xf6 ♖xf6 12.0-0 ♗e7 13.♗d5 ♗xd5
 14.♖xd5 ♗b8 15.♗fd1 ♗d8 16.♖d6 ♖xd6
 17.♗xd6 ♖f8 18.♗ad1 ♖e7 19.♗a5 f6
 20.♗c4 ♗f8 21.♗b6 ♗d8 22.c4 ♖e8 23.
 c5 ♖e7 24.c4 ♖e8 25.a4 ♖e7 26.a5
 ♖e8 27.♗d5 ♖f7 28.♗b6 ♖e7 29.♖f2
 ♗g8 30.♗xd7 ♗a8 31.♗b6 ♗b8 32.♗d5+

GLORNEY & FABER CUPS, DUBLIN 1992 - Round 4.

♟f7 33.♞b6 ♞e6 34.c6 ♞ge8 35.c7 1-0

Furmage, D - Verstappen, M
WLS-BEL (F4b2), 1992

1.e4 e6 2.d4 d5 3.exd5 exd5 4.♞d3
♟f6 5.♟f3 ♞g4 6.♟c3 a6 7.♞d2 c5 8.
dxc5 ♞xc5 9.0-0 0-0 10.♞g5 ♞d4 11.
♞xh7+ ♟xh7 12.♟xd4 ♞e6 13.♞xf6 ♟xf6
14.♟xf6 gxf6 15.♞ad1 ♞d8 16.♞d2 ♟c6
17.♞fd1 ♟e7 18.♟e1 ♟g7 19.♟d3 ♞d7
20.♞e1 f5 21.♟c5 ♞d6 22.♞xb7 ♞b6
23.♟c5 ♞c8 24.♞b3 ♟f6 25.h4 ♞c4 26.
g3 f4 27.♟g2 fxg3 28.fxg3 ♟f5 29.
♟f3 ♞g4 30.♟xg4 ♟d4+ 31.♟f4 ♞xb3
32.axb3 ♞b4+ 33.♟f3 ♞g4+ 34.♟g2 1-0

Remy, M - Dyce, A

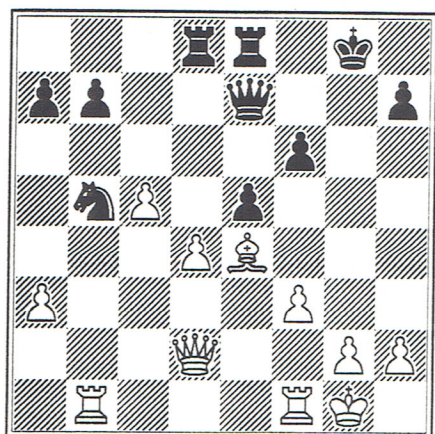
BEL-WLS (F4b3), 1992

1.e4 e6 2.d4 d5 3.exd5 exd5 4.♞d3
♟f6 5.h3 ♞d6 6.♟f3 c6 7.0-0 0-0 8.
c4 dxc4 9.♞xc4 ♞bd7 10.♞e1 ♞b6 11.
♞b3 ♞f5 12.♟c3 ♟c7 13.♞g5 ♞bd7 14.
♟e2 ♞fe8 15.♟c4 ♞e6 16.♟d3 ♞xb3 17.
axb3 h6 18.♞xf6 ♞xf6 19.♞xe8+ ♞xe8
20.♞xa7 ♟b6 21.♞a1 ♟xb3 22.♞b1 ♟d5
23.♟d2 ♟b6 24.♟c4 ♟c7 25.♟xd5 cxd5
26.♟xd6 ♟xd6 27.♟b5 ♞b8 28.♞e1 ♟c6
29.♟xc6 bxc6 30.♞e2 ♞b4 ½-½

Little, S - Haslinger, C

SCO-ENG (F4b1), 1992

1.d4 ♟f6 2.c4 e6 3.♟c3 ♞b4 4.a3
♞xc3+ 5.bxc3 d6 6.f3 ♞bd7 7.e3 e5
8.♟e2 0-0 9.♞g3 ♞e8 10.♞d3 ♟f8 11.
0-0 c6 12.♟c2 ♞g6 13.e4 d5 14.♟f2
♟a5 15.♞d2 ♟c7 16.♞g5 ♟f4 17.♞xf6
gxf6 18.♟d2 ♟e7 19.cxd5 cxd5 20.
exd5 ♟xd5 21.♟h6 f5 22.♟xf5 ♞xf5
23.♞xf5 f6 24.c4 ♞b6 25.c5 ♟d5 26.
♞e4 ♞ad8 27.♞ae1 ♟c3 28.♟d2 ♞b5 29.
♞b1



29...♞xd4 30.♟a2+ ♟h8 31.♞xb5 ♞d7
32.♟b2 a6 33.♞xb7 ♟xc5+ 34.♟h1 ♞ed8
35.♞xd7 ♞xd7 36.♟b8+ ♟g7 37.♟b2 ♟e3
38.♞g1 f5 39.♞c6 ♞d2 40.♟b7+ ♟h6
1-0

Ashby, A - Long, H

ENG-SCO (F4b2), 1992

1.c4 f5 2.♟c3 e5 3.g3 ♟f6 4.♞g2 d6
5.d3 ♞e7 6.e3 0-0 7.♞ge2 c6 8.0-0
♞a6 9.d4 ♟e8 10.♞b1 ♟c7 11.b4 ♞e6
12.d5 cxd5 13.cxd5 ♞f7 14.♟b3 a6
15.♞b2 ♟d7 16.♞fd1 ♞h5 17.♞d2 ♞fc8
18.♞a4 ♞xe2 19.♞xe2 ♟b5 20.♞d2 ♞ab8
21.♞f1 ♟e8 22.♞b6 ♞d8 23.♟c2 ♟e4
24.♞dd1 ♞a8 25.♞xa8 ♞xa8 26.f3 ♞ac8
27.♟d3 ♞g5 28.♟xf5 g6 29.♟d3 ♟xf3+
30.♟h1 ♟a4 31.♞h3 ♞c2 32.♞g2 ♞g5
33.h4 ♟f7 34.♞h3 ♞f8 35.♞d7 ♟xd7
36.♟xc2 ♞c8 37.♟g2 ♟h6 38.♞bc1 ♞xc1
39.♞xc1 ♟a4 40.a3 ♟xd1+ 41.♟g1 0-1

King, A - Eastwood, J

SCO-ENG (F4b3), 1992

1.e4 e6 2.d4 d5 3.♟c3 ♞b4 4.e5 c5
5.♟g4 ♟e7 6.♟f3 ♟c7 7.♞d2 ♞xc3 8.
♞xc3 cxd4 9.♟xd4 0-0 10.♞d3 ♞bc6
11.♟f3 ♞g6 12.♞xg6 fxg6 13.h4 ♟f7
14.0-0-0 ♞d7 15.h5 gxh5 16.♞xh5
♟f4+ 17.♟xf4 ♞xf4 18.♞dh1 h6 19.♞d2
♞f5 20.♞xf5 exf5 21.♞e1 ♞e6 22.b4
a6 23.♟b2 ♟f7 24.c3 ♞c8 25.♞e3 ♞b8
26.♞c5 ♟d7 27.♞d6 ♞b6 28.♞c1 ♟c4+
29.♟c2 ♟xd6 30.exd6 ♞d8 31.♞d1 ♞xd6
32.c4 ♞d8 33.c5 ♟f6 34.a3 ♞d7 35.
♟d3 ♞c6 36.♟d4 ♞e8 37.♟xc6 bxc6 38.
♞d2 g5 39.f3 ♞e1 40.♞a2 ♟e5 41.a4
♞b1 42.♞e2+ ♟f4 43.♟c3 ♟g3 44.♞e6
♟xg2 45.♞xc6 ♟xf3 46.♞xh6 g4 47.♞d6
g3 48.♞xa6 g2 49.♞g6 g1♟ 50.♞xg1
♞xg1 51.b5 ♟e3 52.c6 d4+ 53.♟b2 d3
54.c7 d2 55.c8♟ d1♟ 56.♟e6+ ♟f4 57.
♟h6+ ♟e5 58.♟h8+ ♟f4 59.♟h6+ ♟e5
60.♟h8+ ♟e4 61.♟e8+ ♟f4 62.♟b8+ ♟f3
63.♟b7+ ♟g3 64.♟g7+ ♟f2 65.♟a7+ ♟f1
0-1

RESULTS AFTER THE FOURTH ROUND

GLORNEY GROUP 1

ENGLAND	8.5
NETHERLANDS	6.0
FRANCE	3.0
IRELAND	2.0

FABER GROUP 1

SCOTLAND	4.0
FRANCE	3.0
NETHERLANDS	2.5
ENGLAND	2.5

GLORNEY GROUP 2

SCOTLAND	6.5
GERMANY	5.5
WALES	5.0
BELGIUM	3.0

FABER GROUP 2

WALES	4.0
GERMANY	3.0
IRELAND	2.5
BELGIUM	2.5

Druker Fanning & Partners

Estate Agents Auctioneers Surveyors Valuers
19-22 Dame Street, Dublin 2. Tel: (01) 6797007
Fax: (01) 6792231

**IN ASSOCIATION WITH HEALEY & BAKER AND
CUSHMAN & WAKEFIELD INC.
WITH OFFICES IN EUROPE & USA**

GLORNEY & FABER CUPS, DUBLIN 1992 - Round 5.

Quinn, M - Guadalpi, D
IRL-FRA (G5b1), 1992

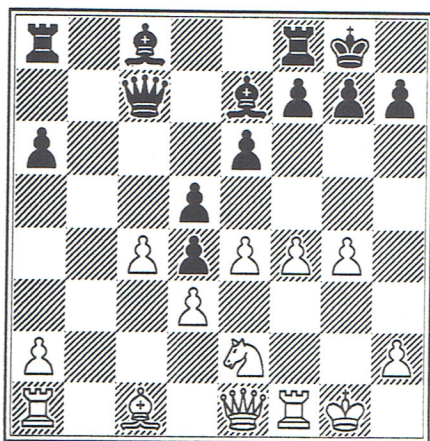
1.c4 g6 2.♗c3 ♗g7 3.d4 ♖f6 4.e4 d6
5.h3 ♗bd7 6.♗d3 e5 7.d5 a5 8.g4 ♗c5
9.♗c2 ♗d7 10.♗g5 h5 11.gxh5 ♗xh5
12.h4 ♗h6 13.♗xh6 ♗xh6 14.♖f3 ♖h5
15.♗ge2 ♖f6 16.♖xf6 ♗xf6 17.♗g3
0-0-0 18.♖e2 ♗dh8 19.b3 ♗xh4 20.
♗xh4 ♗xh4 21.a3 ♗g4+ 22.♖e3 ♖h5 23.
♗xh5 ♗xh5 24.b4 axb4 25.axb4 ♗a6
26.♗b1 ♗h3+ 27.♖d2 ♗f3 28.♗d1 ♗f4
29.♖e3 f5 30.exf5 gxf5 31.♗d3 ♗xb4
0-1

Goldgewicht, L - Gillen, A
FRA-IRL (G5b2), 1992

1.e4 c5 2.c4 ♗c6 3.♗c3 g6 4.g3 ♗g7
5.♗g2 a6 6.d3 e6 7.♗ge2 ♗ge7 8.♗b1
♗d4 9.a3 ♗ec6 10.b4 cxb4 11.axb4 b5
12.♗e3 0-0 13.0-0 ♗b8 14.♖d2 d6 15.
♗fc1 ♗d7 16.♗xd4 ♗xd4 17.♗e2 ♗xe2+
18.♖xe2 ♗c6 19.♖a2 ♗a8 20.♖a5 ♖xa5
21.bxa5 ♗ac8 22.♗b6 ♗fe8 23.cxb5
½-½

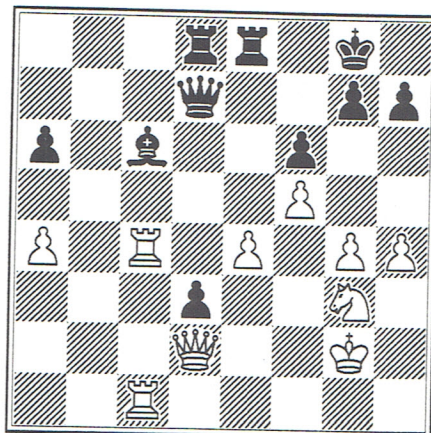
Gillen, S - Doornbos, Y
IRL-FRA (G5b3), 1992

1.e4 c5 2.f4 e6 3.♗f3 ♗c6 4.♗b5
♗ge7 5.0-0 a6 6.♗xc6 ♗xc6 7.c4 ♖c7
8.d3 ♗e7 9.♗c3 d6 10.♖e1 0-0 11.g4
[White must expand on the king-
side]. 11...b5 12.b3 [If 12.cb ab
13.♗xb5 ♖b6 14.♗c3 c4+ 15.d4 ♗xd4
[if 16.♗e3 ♗xf3+ & ♖xb2] 16.♗xd4
♖xd4+ 17.♗e3 ♖f6=]. 12...♗d4 13.
♗xd4 cxd4 14.♗e2 bxc4 15.bxc4 d5

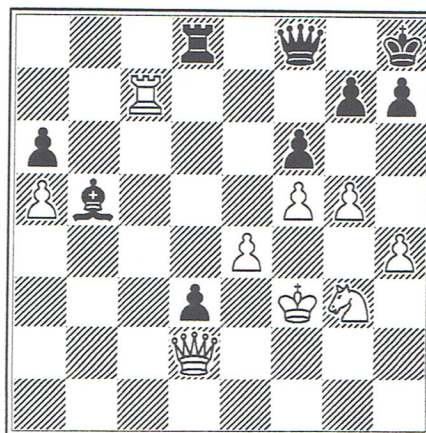


16.cxd5 exd5 17.f5 dxe4 18.dxe4 ♗b7
19.♗f4 ♗d6 20.♗xd6 ♖xd6 21.♗g3 f6
[Black seems to have all the
trumps. Passed d-pawn, backward e-

pawn to attack, more active pieces
etc.]. 22.♖d2 ♗fe8 23.♗fe1 ♗ad8 24.
♗ab1 ♗a8 25.♗b3 ♗c6 26.♖g2 ♗b5 27.
h4 d3 28.♗c1 ♖d4 29.♗b4 ♖d7 30.a4
♗c6 [If 30... ♗xa4 31.♖a2+ ♖h8 32.
♖xa4 d2 33.♗d1 wins]. 31.♗bc4



31...♗a8 [31...♗xa4 32.♗c7 ♖b5 (if
32...♖d4 33.♗lc4 ♖e5 34.♗4c5 ♖a1
35.♗h5 ♗xe4 36.♗xg7 + ♖f8 {36...
♖h8?? 37.♗cc7 ♗e2+ 38.♖xe2 de 39.
♗xh7+ ♖g8 40.♗cg7+ ♖f8 41.♗h8#} 3
7.♗cc7 ♗e2+ 38.♖xe2 de 39.♗cf7+ ♖e8
40.♗e7+ ♖f8 41.♗gf7+ ♖g8 42.♗xf6+
wins)]. 32.♗1c3 ♖d6 33.♖f3 ♗d7 34.
g5 ♗ed8 35.♗b3 ♖e5 36.♗bc3 ♗b7 37.
♗b3 ♖h8 38.♗bc3 ♗d4 39.♗xd4 ♗xd4
40.♖g4 ♖d6 41.a5 ♖d7 42.♖f4 ♗c6 43.
♗c1 ♗b5 44.♖f3 ♖d8 [Neither side
was making much progress until
now]. 45.♗h5 ♖a8 46.♗g3 ♖f8? [46...
♖d8 again, with a draw]. 47.♗c7 ♗d8



[Again 47...♖d8 is better]. 48.♗h5
♗d7 49.♗f4 ♖d6 50.♗c3 ♗b5 51.♗e6
♖g8 52.h5 fxc5 53.♗xc5 ♗e8 54.♗xd3

♖xh5+ 55.♖g2 ♗f6 56.♞d6 ♗e7 57.♞e6
 ♗a3 58.♗e2! ♞e8 59.♗f2 [Missing 59.
 ♞xe8! ♞xe8 60.♗h5 ♗b2+ 61.♗h3 ♗c3+
 62.♖g4 wins]. 59...♗c1 60.♖xh7?
 ♖h5! [Now black wins quickly with
 his extra piece]. 61.♞xa6 ♗xh7 62.
 ♞d6 ♞c8 63.♞d2 ♞c3 64.♗h2 ♞f3 65.
 ♗g2 ♗e1 66.♗g5 ♞f2+ 67.♞xf2 ♗xf2+
 68.♗h3 ♗f3+ 69.♗h4 ♗h1+ 70.♖g3 ♗g1+
 71.♗f4 [If 71.♗h4 ♗h2#]. 71...♗c1+
 0-1

Gaudineau, E - Peart, A
 FRA-IRL (G5b4), 1992

1.e4 c5 2.f4 ♖c6 3.♖c3 g6 4.♖f3 ♖g7
 5.♖c4 e6 6.f5 ♖ge7 7.fxe6 fxe6 8.d3
 d5 9.♖b3 b5 10.♗d2 0-0 11.a4 b4 12.
 ♖e2 ♞b8 13.♞a2 ♖a5 14.0-0 b3 15.
 cxb3 ♖xb3 16.♖xb3 ♞xb3 17.♗c2 ♗b6
 18.a5 ♗b5 19.♖c3 ♖xc3 20.bxc3 dxe4
 21.dxe4 ♞a6 22.♖h6 ♞b2 23.c4 ♞xc2
 24.cxb5 ♖xb5 25.♖xf8 ♖c6 26.♖h6
 ♖xf1 27.♞xf1 ♞b2 28.♖e5 1-0

Darby, C - Meramt, N
 IRL-FRA (G5b5), 1992

1.e4 e6 2.d4 d5 3.♖c3 ♖b4 4.♖ge2
 dxe4 5.a3 ♞e7 6.♖xe4 ♖f6 7.♗d3 0-0
 8.♖f4 ♖bd7 9.0-0-0 b6 10.♖2c3 ♖b7
 11.♞e2 ♖xe4 12.♖xe4 ♖f6 13.♖f3 ♖d5
 14.♖d2 ♗c8 15.♖g5 ♖f6 16.♖c3 ♞a6
 17.♗e3 c6 18.h4 ♖d5 19.♗e4 g6 20.
 ♖d2 h6 21.♖h3 f5 22.♗e1 ♗h7 23.♖xd5
 cxd5 24.♗e3 ♖g7 25.♗xh6+ ♖f7 26.h5
 ♖e8 27.♗xg6+ ♖d7 28.♖b4 ♖xb4 29.
 axb4 ♗c4 30.♖f4 ♞ae8 31.♞he1 ♗a2
 32.♞xe6 ♗a1+ 33.♖d2 ♗xb2 34.♖g7+
 ♖c8 35.♖xd5 1-0

Jonker, M - Parker, J
 NDL-ENG (G5b1), 1992

1.e4 e5 2.♖c3 ♖f6 3.g3 ♖c5 4.♖g2
 0-0 5.♖ge2 c6 6.0-0 d5 7.exd5 ♖xd5
 8.♖xd5 cxd5 9.d4 exd4 10.♖xd4 ♖b6
 11.♞e3 ♖c6 12.c3 ♖e5 13.♗b3 ♖c4 14.
 ♖f4 ♞e6 15.♞ad1 ♞c8 16.h3 ♗f6 17.
 ♞fe1 ♞fd8 18.♞e2 ♖a5 19.♗c2 ♖xd4
 20.♞xd4 ♖c6 21.♞d1 d4 22.♖xc6 ♞xc6
 23.♞e5 ♗h6 24.♞xd4 ♞xd4 25.♖xd4
 ♗xh3 26.♗e4 h5 27.♗h4 ♗xh4 28.gxh4
 ♖xa2 29.♞e8+ ♗h7 30.♞e5 b6 31.♞xh5+
 ♖g8 32.♞e5 ♞e6 33.♖g2 f6 34.♞e1 ♖f7
 35.♖g3 a5 36.♖f4 a4 37.♞g1 b5 38.
 ♞g3 ♞c8 39.♞g1 ♞h8 40.♖g3 ♞h5 41.
 ♞d1 ♖b3 42.♞e1 ♞d5 43.♞e4 ♖c2 44.
 ♞e2 ♖f5 45.♞d2 ♖e6 46.♞e3 ♖d3 47.

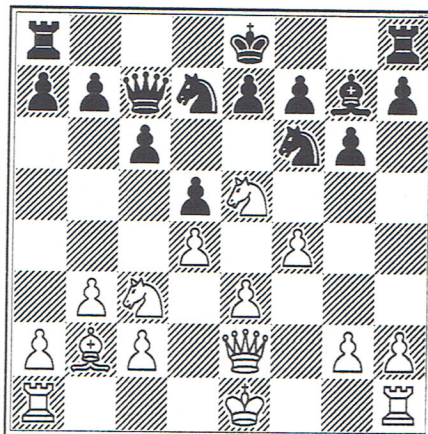
♖d4 ♖f5 48.♞e3 ♞xd2 49.♖xd2 ♖d5 50.
 ♖f4 ♖c4 ½-½

Ansell, S - Vedder, H
 ENG-NDL (G5b2), 1992

1.e4 e6 2.d4 d5 3.♖d2 ♖e7 4.♖gf3
 ♖d7 5.e5 c5 6.c3 ♖c6 7.♖d3 ♗b6 8.
 0-0 cxd4 9.cxd4 ♖xd4 10.♖xd4 ♗xd4
 11.♖f3 ♗b6 12.♗c2 h6 13.♞e3 ♖c5 14.
 ♖d2 a5 15.♗a4 ♗a7 16.♖g4 ♖f8 17.
 ♞ac1 b6 18.♖f4 ♖g8 19.a3 a4 20.♖b5
 ♖f8 21.♖b4 ♖g6 22.♖g3 ♞a6 23.♖xa6
 ♗xa6 24.♖xc5 bxc5 25.♞xc5 ♗h7 26.h4
 ♞hc8 27.♞fc1 ♞xc5 28.♞xc5 ♞c8 29.
 ♞xc8 ♗xc8 30.h5 ♗c1+ 31.♗h2 ♖f4 32.
 ♗h4 ♖d3 33.♗xa4 ♖xf2 34.♗d4 ♗h1+
 35.♖g3 ♖e4+ 36.♖f4 ♗xg2 37.♖g1 ♗xb2
 38.a4 ♗b4 39.♗d4 ♗a3 40.♗a7 ♗c1+
 41.♗e3 ♗c2 42.♗a7 ♖g5 43.♖xg5+
 hxg5+ 44.♖xg5 ♗f5+ 45.♗h4 ♗f4+ 46.
 ♗h3 d4 47.♖g2 d3 48.♖f2 ♗xa4 49.
 ♗xf7 ♖g4+ 50.♗h2 d2 51.h6 d1♗ 52.
 ♖g8+ ♖xg8 53.h7+ 0-1

v.d.Weide, K - Hassabis, D
 NDL-ENG (G5b3), 1992

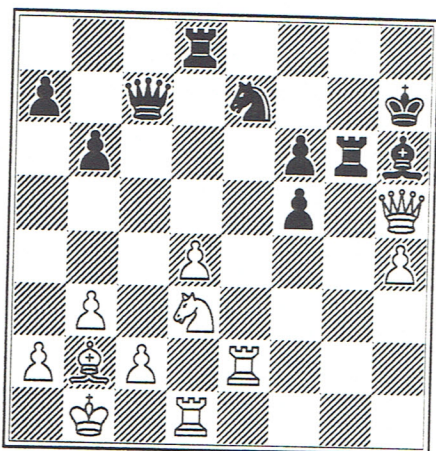
1.f4 d5 2.b3 ♖f6 3.e3 g6 4.♖b2 ♖g7
 5.♖f3 ♖g4 6.♞e2 ♖bd7 7.♖e5 ♖xe2 8.
 ♗xe2 c6 9.♖c3 ♗c7 10.d4



10...♖b6 [Starting a manoeuvre which
 tries to gain control of e4.
 However, it's too slow but; 10...
 ♖e4 11.♖xe4 & 12.c4!]. 11.0-0-0 ♖c8
 12.e4 0-0 13.exd5 cxd5 14.g4 e6 15.
 h4 h5 16.f5 exf5 17.gxf5 ♖h6+ 18.
 ♗b1 gxf5? [18...♖e7 looks better,
 activating black's remaining
 pieces; 19.gf gf), but white is
 still much better]. 19.♖xd5 ♖xd5
 20.♖g2+ ♗h7 21.♗xd5 ♖e7 [Finally,

19 fg fg

but too late]. 22.♖f3 f6 23.♗d3 ♖g8
24.♗xh5 ♖g6 25.♞he1 ♞d8 26.♞e2 b6



[26...♞d7 is more to the point]. 27.
♞de1 ♞d7 28.c4 ♖g7 29.d5 b5 30.♗e5!
[There was no stopping this move!].
30...bxc4 31.♗xd7 [If 31...♗xd5 32.
♞e7+! ♗xe7 33.♞xe7 ♖h8 34.♗xg6
wins]. 1-0

Poulton, J - Kroeze, F
ENG-NDL (G5b4), 1992

1.d4 d5 2.♗f3 c6 3.c4 e6 4.♗c3 dxc4
5.a4 ♗b4 6.e3 b5 7.♗e5 ♗f6 8.♖f3
♗d5 9.♖f4 0-0 10.♗e2 ♗d8 11.♖f3 ♗d5
12.e4 ♗xc3 13.bxc3 ♖xd4 0-1

Wiessma, E - Merriman, J
NDL-ENG (G5b5), 1992

1.d4 e6 2.c4 d5 3.cxd5 exd5 4.♗c3
♗f6 5.♗g5 ♗e7 6.e3 h6 7.♗xf6 ♗xf6
8.♗d3 c6 9.♗ge2 ♗d7 10.b4 0-0 11.
0-0 ♞e8 12.b5 ♗b6 13.bxc6 bxc6 14.
♗a4 ♗xa4 15.♖xa4 ♗d7 16.♖c2 ♖a5 17.
♗c1 ♗e7 18.♗h7+ ♖h8 19.♗f5 ♖c7 20.
♗xd7 ♖xd7 21.♗d3 ♗d6 22.♞ac1 ♞ac8
23.♖e2 ♖f5 24.♞c3 ♞e4 25.♞fc1 ♞h4
26.g3 ♞e4 27.♞xc6 ♞d8 28.♖c2 ♖h7
29.♗c5 ♗xc5 30.♞xc5 h5 31.♖g2 h4
32.f3 h3+ 33.♖f2 ♞de8 34.g4 ♖f6 35.
♖e2 ♖f4 36.fxe4 ♞xe4 37.♖d3 ♖xh2+
38.♖d1 ♖xa2 39.♞5c2 ♖a4 40.♖e1 ♖d7
41.♞h2 ♖xg4 42.♖d2 f5 43.♞ch1 f4
44.♞xh3+ ♖g8 45.♞h8+ ♖f7 46.♞f1
♖g2+ 47.♖c3 1-0

Jones, A - Claesen, J
WLS-BEL (G5b1), 1992

1.e4 d6 2.d4 ♗f6 3.♗c3 g6 4.f4 ♗g7
5.♗f3 0-0 6.♗e2 c5 7.dxc5 ♖a5 8.0-0
♖xc5+ 9.♖h1 ♗bd7 10.♗d3 a6 11.a4 b6

12.♖e1 ♗b7 13.♗e3 ♖c7 14.♖h4 ♞fe8
15.♞ae1 ♗f8 16.f5 ♞ac8 17.♗d4 ♖d8
18.e5 dxe5 19.♗xe5 g5 20.♖f2 ♗g4
21.♗xg4 ♗xd4 22.f6 ♗g6 23.♗h6+ ♖f8
24.fxe7+ ♞xe7 25.♖xf7+ 1-0

Goossens, E - Fish, A
BEL-WLS (G5b2), 1992

1.e4 e6 2.d4 d5 3.♗c3 ♗b4 4.e5 c5
5.a3 ♗xc3+ 6.bxc3 ♖c7 7.♗f3 ♗d7 8.
a4 ♗c6 9.♗b5 ♗ge7 10.0-0 a6 11.♗d3
b6 12.♗a3 ♗a5 13.♗g5 h6 14.♗h3 ♗c4
15.♗c1 ♗c6 16.♖g4 g6 17.♖h4 ♗d7 18.
f4 ♞af8 19.♞d1 ♖c8 20.dxc5 bxc5 21.
♖f2 ♗b7 22.♞b1 ♞d8 23.♞b3 ♗a5 24.
♞b2 ♗f5 25.♗d2 ♖c6 26.♞db1 c4 27.
♗e2 ♞d7 28.♖a7 ♖xa4 29.♗f2 ♗c6 30.
♖b6 ♞c7 31.g4 ♗fe7 32.♗e3 d4 33.
cxd4 ♗d5 34.♖xc7+ ♗xc7 35.♞xb7 ♖xc2
36.♗f3 ♗d5 37.♗e4 ♖d3 38.♗d6+ ♖d8
39.♗xf7+ ♖e8 40.♗d6+ ♖d8 41.♗f7+
♖e8 42.♗d6+ ♖d8 43.♗f7+ ♖e8 ½-½

Bacon, I - Soetewey, S
WAL-BEL (G5b3), 1992

1.e4 b6 2.c4 ♗b7 3.♗c3 e6 4.d4 ♗b4
5.♗d3 f5 6.♖h5+ ♖f8 7.♗ge2 ♗f6 8.
♖h4 fxe4 9.♗c2 ♖e8 10.0-0 ♗e7 11.
♖g3 ♗a6 12.♗f4 ♖f7 13.a3 ♞f8 14.b4
♖g8 15.♞e1 ♖f7 16.♗xe4 ♗xe4 17.♗xe4
♗xe4 18.♞xe4 d5 19.♞xe6 ♗d6 20.♞xd6
cxd6 21.♗xd5 ♞ae8 22.♗e3 b5 23.♞xb5
♖xd5 24.bxa6 ♖c6 25.♞c1?? 0-1

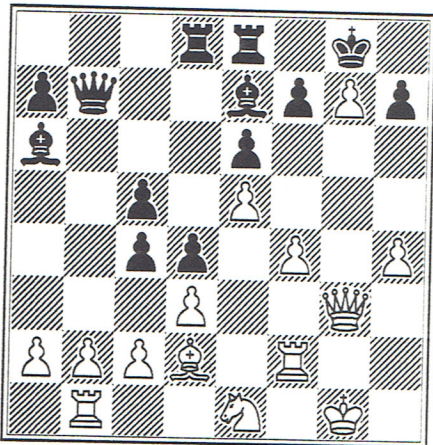
Maas, T - Morton, R
BEL-WLS (G5b4), 1992

1.e4 c6 2.d4 d5 3.e5 ♗f5 4.♗c3 e6
5.g4 ♗g6 6.♗ge2 f6 7.♗f4 ♗f7 8.♖e2
fxe5 9.♖xe5 ♗d7 10.♖e2 ♖e7 11.♗d3
g5 12.♗e3 ♗g7 13.0-0-0 0-0-0 14.♗g2
♖b8 15.f4 gxf4 16.♗xf4+ ♖a8 17.♗e5
♗xe5 18.♗xe5 ♗xe5 19.♖xe5 ♗f6 20.h3
♗d7 21.♖g3 ♗b6 22.♞he1 ♗c4 23.♗f1
♖g5+ 24.♖b1 ♗d2+ 25.♖a1 ♗xf1 26.
♞xf1 ♗g6 27.h4 ♖e7 28.♖b1 ♞hg8 29.
♖h2 ♞df8 30.a3 ♗e8 31.g5 ♗h5 32.
♞de1 ♞f7 33.♖e5 ♗g4 34.♞g1 ♗f5 35.
♗e2 ♞gf8 36.♗g3 ♗g6 37.h5 ♗f5 38.
♗xf5 ♞xf5 39.♖xe6 ♖xe6 40.♖xe6 a6
41.♞e7 ♞g8 42.♞xh7 ♞fxg5 43.♞xg5
♞xg5 44.h6 ♞h5 45.b4 ♖a7 46.♖c1 ♞h4
47.c3 ♞h2 48.♖d1 ♖b6 49.♖e1 ♖b5 50.
♞xb7+ ♖c4 51.h7 ♖xc3 52.♞a7 ♖xd4
53.♞xa6 ♞xh7 54.♞xc6 ♞a7 55.b5 ♞xa3
56.♖d2 ♞b3 57.b6 ♞b5 ½-½

GLORNEY & FABER CUPS, DUBLIN 1992 - Round 5.

Rizvi, N - De Wachter, S
WLS-BEL (G5b5), 1992

1.e4 c5 2.♗c3 ♗c6 3.f4 e6 4.♗f3 d5
5.♗b5 ♗f6 6.e5 ♗d7 7.♗xc6 bxc6 8.
0-0 ♗a6 9.d3 ♗e7 10.♖e1 0-0 11.g4
♗e8 12.♖g3 ♗f8 13.♗d2 ♖b6 14.♗ab1
♗ad8 15.h4 ♖b7 16.♗f2 d4 17.♗e4 c4
18.♗e1 c5 19.g5 ♗d7 20.♗f6+ ♗xf6
21.gxf6 ♗f8 22.fxf7 ♗e7



23.f5 exf5 24.♗xf5 ♖c6 25.♗g5 ♗c8
26.♗f4 ♗xg5 27.♖xg5 ♗b7 28.♗f3 ♗d7
29.♗f6 ♖c7 30.♗e1 ♗de7 31.♖f5 ♗c8
32.♖f4 cxd3 33.cxd3 ♗b7 34.♗h6 ♖xg7
35.♖f5 ♗h8 36.♖f6+ ♖g8 37.♖f2 1-0

Theissen, H - Bathie, N
GER-SCO (G5b1), 1992

1.e4 e6 2.d4 d5 3.♗d2 c5 4.♗gf3
cxd4 5.exd5 ♖xd5 6.♗c4 ♖d6 7.0-0
♗f6 8.♗b3 ♗c6 9.♗bxd4 ♗xd4 10.♗xd4
♗d7 11.c3 ♖c7 12.♖e2 ♗e7 13.♗b5 ♖b8
14.g3 e5 15.♗e1 a6 16.♗f4 ♗g4 17.
♗d4 ♗d6 18.♗xe5 ♗xe5 19.f4 0-0 20.
fxe5 ♗c5 21.♖g2 ♖c8 22.e6 fxe6 23.
♗xe6+ ♖h8 24.♗xd7 ♖xd7 25.♖e6 ♖xe6
26.♗xe6 ♗xd4 27.cxd4 ♗ad8 28.♗d1
♗d7 29.d5 ♖g8 30.♗e5 ♗f6 31.♗d3 ♖f7
32.♗f3 ♖g6 33.g4 h6 34.♖g3 ♗fd6 35.
♗d3 ♗b6 36.b3 ♖f6 37.♗f5+ ♖e7 38.
♗d4 ♗f6 39.♖f4 ♗xf5+ 40.♖xf5 ♗d6
41.♖e5 b5 42.♗f4 ♗d8 43.a4 bxa4 44.
bxa4 a5 45.♗c4 ♗b8 46.h4 ♗b1 47.
♗c7+ ♖f8 48.♖e6 ♗e1+ 49.♖d7 ♗d1 50.
d6 ♗d4 51.g5 hxg5 52.hxg5 g6 53.
♗c8+ ♖f7 54.♗c5 1-0

Roberts, P - Racherbaumer, M
SCO-GER (G5b2), 1992

1.e4 e6 2.d4 d5 3.♗d2 c5 4.exd5
exd5 5.♗gf3 ♗c6 6.♗b5 ♗d6 7.0-0

♗ge7 8.dxc5 ♗xc5 9.♗b3 ♗d6 10.♗e1
0-0 11.♗g5 ♖c7 12.♗h4 ♗f5 13.♗g3
♗xg3 14.hxg3 ♗e6 15.♗bd4 ♖b6 16.♗d3
♗xd4 17.♗xd4 ♗c5 18.c3 ♖xb2 19.♗e3
g6 20.♗c2 ♗xd4 21.cxd4 ♖b6 22.g4
♗ac8 23.♗b1 ♖c7 24.♗d3 ♖f4 25.♗e2
♗c7 26.g3 ♖f6 27.♗e5 h6 28.♖d2 ♖g7
29.♗c1 ♗fc8 30.♗xc7 ♗xc7 31.f4 b5
32.g5 hxg5 33.fxg5 ♖e7 34.♗xb5 ♖a3
35.♗e3 ♗c2 36.♗xa3 ♗xd2 37.♗xa7
♗xd4 38.♖f2 ♗b4 39.♗d7 ½-½

Ellers, H - Rowson, J
GER-SCO (G5b3), 1992

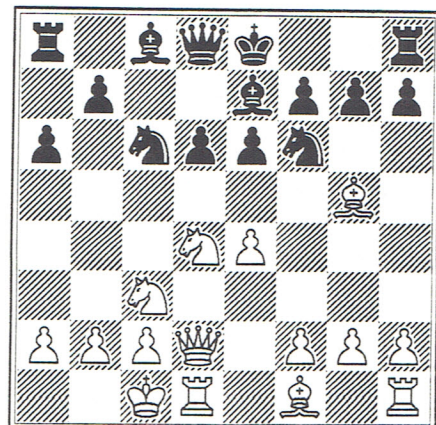
1.d4 ♗f6 2.c4 g6 3.♗f3 ♗g7 4.g3 0-0
5.♗g2 d6 6.0-0 ♗bd7 7.♗c3 e5 8.e4
h6 9.♖c2 ♗h7 10.dxe5 dxe5 11.♗e3
♗g5 12.♗xg5 hxg5 13.♗fd1 c6 14.♖c1
g4 15.h3 gxh3 16.♗xh3 ♖c7 17.♗xd7
♗xd7 18.♗c5 ♗fe8 19.♖g5 ♗e6 20.♗d6
♖a5 21.c5 ♖d8 22.♖xd8 ♗axd8 23.b3
f6 24.f3 ♖f7 25.♖f2 ♗h8 26.♗h1 ♗h6
½-½

Sanger, M - Fischer, M
SCO-GER (G5b4), 1992

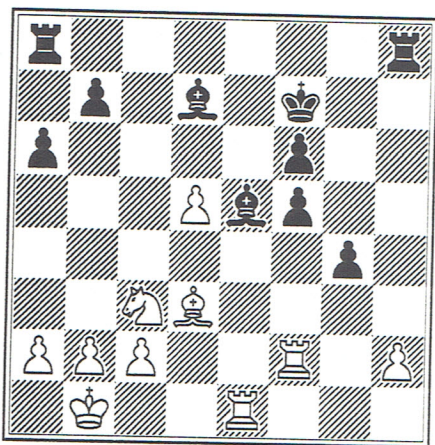
1.e4 ♗f6 2.e5 ♗d5 3.c4 ♗b6 4.d4 d6
5.exd6 cxd6 6.♗c3 g6 7.♗e3 ♗g7 8.
♗e2 0-0 9.♗f3 ♗c6 10.0-0 ♗g4 11.b3
e5 12.dxe5 dxe5 13.♗c1 f5 14.c5 ♗d7
15.♗g5 ♗xe2 16.♖xe2 ♗d4 17.♖c4+ ♖h8
18.♗f7+ ♗xf7 19.♖xf7 ♗xc5 20.♗xd4
exd4 21.♗b5 ♖b6 22.♗c7 ♗f8 23.♖e7
♗d3 24.♗e6 ♗g8 25.♗c8 1-0

Ullrich, F - Willetts, S
GER-SCO (G5b5), 1992

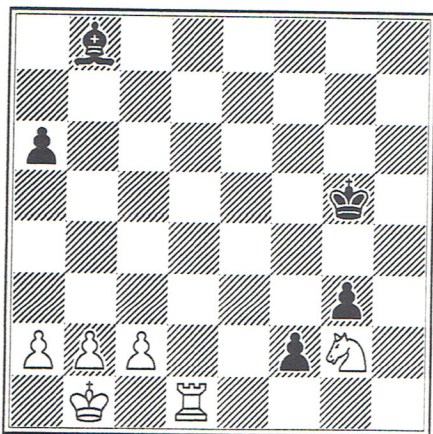
1.e4 c5 2.♗f3 d6 3.d4 cxd4 4.♗xd4
♗f6 5.♗c3 ♗c6 6.♗g5 e6 7.♖d2 ♗e7 8.
0-0-0 a6



[8...0-0 is more usual]. 9. Δ xf6 gxf6
 10. f4 Ψ c7 11. Δ e2 h5 [Otherwise, 12.
 g4 gains a lot of space for white].
 12. g4 hxg4 13. Δ dg1 [Just 13. Δ xg4
 looks good]. 13... Δ xd4 14. Ψ xd4 d5
 15. exd5 e5 [All this is to prevent
 white winning the black g- Δ and
 then advancing his passed h- Δ . If
 15... Δ c5 16. Ψ xf6 wins]. 16. Ψ e4 f5
 17. Ψ xe5 Ψ xe5 18. fxe5 Δ g5+ 19. Ψ b1
 Δ f4 20. Δ g2 Δ d7 [Better is 20... Δ xe5
 21. Δ e1 f6 $\bar{7}$]. 21. Δ d3 Δ xe5 22. Δ e1 f6
 23. Δ f2 Ψ f7



[Better is 23...f4 24. Δ g6+ Ψ d8 25.
 Δ e4 g3 26. hg fg 27. Δ ff1 Δ h3 $\bar{7}$]. 24.
 Δ xf5 Δ xf5 25. Δ xf5 Δ xh2 26. Δ e4 Δ d8
 27. d6 Δ dh8 [The rook should stay on
 the d-file]. 28. Δ ff1 Ψ g6 29. d7 Δ d8
 30. Δ c5 Δ d2 31. Δ d1 Δ xd1+ 32. Δ xd1 f5
 33. Δ xb7 Δ xd7? [33... Δ c7 is much
 better]. 34. Δ xd7 g3 35. Δ d1 f4 36.
 Δ c5 f3 37. Δ d3 Δ b8 38. Δ e1 f2 39. Δ g2
 Ψ g5



[This is an incredible position.]

White must eventually give up his
 Δ & Δ for the two passed Δ 's. Can he
 win the Ψ +3 Δ 's V Ψ , Δ + Δ ending?].
 40. c4! Ψ g4 41. Ψ c2 Ψ h3?? [41... Ψ f3
 draws after 42. Δ h4 Ψ g4]. 42. Δ e3 g2
 43. Δ xg2 Ψ xg2 44. Ψ d3 f1 Ψ + 45. Δ xf1
 Ψ xf1 46. b4 Ψ e1 [46... Δ a7 is a
 little better, but 47. a4 still
 wins]. 47. a4 Ψ d1 48. c5 Ψ c1 49. b5
 Ψ b2 50. b6 1-0

Griffiths, A.K. - Schuster, B
 WLS-GER (F5b1), 1992

1. e4 c6 2. d4 d5 3. exd5 cxd5 4. c3
 Δ f6 5. Δ d3 Δ g4 6. Ψ b3 Ψ c7 7. Δ g5 e6 8.
 Δ d2 Δ c6 9. Δ gf3 Δ d6 10. 0-0 Δ d7 11.
 Δ fe1 0-0 12. Ψ c2 h6 13. Δ h4 Δ fe8 14.
 h3 Δ xf3 15. Δ xf3 Δ f8 16. Δ ad1 a6 17.
 a4 1/2-1/2

Bauer, J - Furmage, D
 GER-WLS (F5b2), 1992

1. e4 c5 2. Δ f3 Δ c6 3. d4 cxd4 4. Δ xd4
 Δ f6 5. Δ c3 e5 6. Δ f3 Δ b4 7. Δ d2 Δ xc3
 8. Δ xc3 Δ xe4 9. Δ xe5 Δ xc3 10. Δ xc6
 Δ xd1 11. Δ xd8 Δ xb2 12. Δ xb7 Δ xb7 13.
 Δ b1 0-0 14. Δ xb2 Δ ab8 15. Ψ d2 Δ xg2
 16. Δ xb8 Δ xh1 17. Δ b3 Δ c6 18. Δ a3 Δ a8
 19. Δ a5 Ψ f8 20. Δ c4 f6 21. Δ b3 g5 22.
 Δ c4 1/2-1/2

Dyce, A - Byrne, C
 WLS-GER (F5b3)*, 1992

1. d4 d5 2. Δ f3 Δ f6 3. Δ f4 Δ f5 4. h3 e6
 5. e3 h6 6. Δ bd2 Δ d6 7. Δ xd6 Ψ xd6 8. c4
 0-0 9. Δ e2 c6 10. 0-0 Δ bd7 11. Δ c1 b6
 12. a3 a5 13. Δ b1 Δ xb1 14. Ψ xb1 Δ ab8
 15. Δ c1 Ψ e7 16. cxd5 cxd5 17. Δ c7 Δ fc8
 18. Ψ c1 Δ xc7 19. Ψ xc7 Δ e8 20. Ψ g3 Ψ d6
 21. Δ e5 Δ xe5 22. dxe5 Ψ e7 23. Δ f3 Δ c8
 24. Δ d4 Ψ g5 25. Ψ xg5 hxg5 26. Δ b5 Δ c1+
 27. Ψ h2 Δ c7 28. Δ c6 Δ b1 29. b3 Δ a6 30.
 Δ a4 Δ c5 31. Δ f3 Δ xb3 32. Δ xg5 f6 33.
 exf6 gxf6 34. Δ xe6 Δ c5 35. Δ xc5 bxc5
 36. Δ c6 d4 37. exd4 cxd4 38. Δ d5+ Ψ g7
 39. Δ e4 Δ a1 0-1

Corry, A - Verstappen, P
 IRL-BEL (F5b1), 1992

1. e4 e6 2. d4 d5 3. exd5 exd5 4. c4
 Δ f6 5. Δ g5 Δ e7 6. Δ c3 Δ e6 7. Δ f3 h6 8.
 Δ f4 a6 9. Δ e5 Δ bd7 10. Δ e2 0-0 11. 0-0
 dxc4 12. Δ xc4 Δ d5 13. Δ xd5 Δ xd5 14.
 Δ e3 Δ f6 15. Ψ c2 Δ d6 16. Δ e5 Δ e4 17.
 Ψ c3 Ψ e7 18. Δ g4 Δ xg4 19. Δ xg4 Δ fe8
 20. Δ xd6 Ψ xd6 21. Δ f3 1/2-1/2

GLORNEY & FABER CUPS, DUBLIN 1992 - Round 5.

Verstappen, M - Hollinger, R
BEL-IRL (F5b2), 1992

1.d4 e6 2.c4 c5 3.e3 g6 4.c3 b6
5.f3 g7 6.d3 0-0 7.0-0 d5 8.b3
c6 9.b2 b7 10.a3 e8 11.cxd5
xd5 12.xd5 xd5 13.c4 d6 14.d2
a5 15.f1 xc4 16.bxc4 xf3 17.
gxf3 ad8 18.d5 e6 19.xg7 xg7 20.
e4 a6 21.ab1 e7 22.b2+ g8 23.
xb6 xb6 24.xb6 exd5 25.exd5 a7
26.c6 f8 27.xc5 h5 28.d6 dd7
29.c8+ g7 30.c5 h4 31.c6 xd6 32.
xd6 e7 33.c7 h3 34.f1 1-0

Collins, D - Muriel, R
IRL-BEL (F5b3), 1992

1.e4 c5 2.c3 e6 3.d4 cxd4 4.cxd4
f6 5.e5 d5 6.f3 d6 7.c4 d7 8.
0-0 c6 9.e1 d7 10.c3 b6 11.
b3 e7 12.e4 0-0 13.a3 c8 14.c2
h6 15.d3 c7 16.f6+ xf6 17.exf6
g6 18.fxe7 xe7 19.xh6 fe8 20.
ac1 c7 21.g5 d7 22.f6 xf3 23.
xf3 d5 24.e4 xf6 25.xf6 e7
26.xe7 exe7 27.ee1 g7 28.b3 a6
29.f4 f6 30.xc7 xc7 31.d5 e7
32.dxe6 fxe6 33.f2 f5 34.g3 e5
35.fxe5 xe5 36.d1 b5 37.d5+
xd5 38.xd5 b5 39.b4 g5 40.b7 g4
41.xa6 h3 42.g1 d5 43.xb5 d4
44.a4 1-0

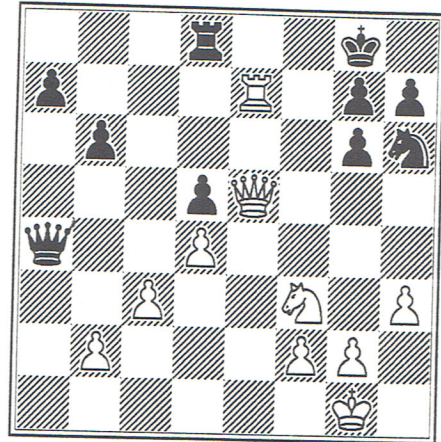
Tichelman, I - Little, S
NDL-SCO (F5b1), 1992

1.d4 d5 2.c4 e6 3.c3 f6 4.g5 e7
5.f3 bd7 6.e3 c6 7.c2 0-0 8.e2
e8 9.0-0 f8 10.ad1 g6 11.e5
d7 12.xe7 xe7 13.f4 gxe5 14.
fxe5 f6 15.d3 f5 16.cxd5 exd5 17.
xf5 f8 18.e4 xf5 19.exf5 g6 20.
g4 g5 21.g2 ad8 22.d3 d7 23.
g3 e7 24.h3 f8 25.e6 xe6 26.
fxe6 xe6 27.f3 e7 28.g3 de8
29.h3 b5 30.b4 a6 31.f4 d7 32.h4
a7 33.f6 b8 34.xc6 e1 35.xd5
le2 36.f6+ h8 37.xe8+ xe8 38.
xe8 h5 39.f8+ 1-0

Lang, H - Jaquet, I
SCO-NDL (F5b2), 1992

1.e4 c6 2.d4 d5 3.exd5 cxd5 4.d3
f6 5.c3 c6 6.f3 g4 7.f4 e6 8.
bd2 h5 9.b3 c8 10.0-0 e7 11.
fe1 d7 12.a4 0-0 13.ac1 b6 14.
c2 g6 15.xg6 fxg6 16.g3 d7 17.
a1 c8 18.e2 d6 19.ae1 d8 20.

e5 c8 21.d3 f5 22.d2 f6 23.
c1 b6 24.d2 e8 25.f4 e7 26.g5
xg3 27.xg3 a6 28.h3 xa4 29.f3
e8 30.g4 f7 31.xe6 c6 32.d8
xd8 33.xe7 xe7 34.xe7 h6 35.
f4 a4 36.e5



36...a1+ 37.h2 f5 38.e6+ h8
39.e8+ 1-0

DeLaMarre, M - King, A
NDL-SCO (F5b3), 1992

1.e4 d6 2.d4 f6 3.c3 g6 4.e2 g7
5.f4 c5 6.dxc5 a5 7.d2 xc5 8.h3
bd7 9.f3 a6 10.a4 0-0 11.d3 b6
12.e2 b7 13.e3 b4 14.d2 h5
15.d1 c5 16.f2 xf2+ 17.xf2 c5
18.e1 f6 19.c3 fe8 20.g4 ad8
21.g5 fd7 22.b4 xd3+ 23.cxd3 f8
24.ac1 a5 25.bxa5 c5 26.e3 bxa5
27.d4 b3 28.b1 xd2 29.xd2 b8
30.b5 c6 31.c4 xb5 32.xb5 xb5
33.axb5 c8 34.d3 a4 35.b6 b8 36.
b1 b7 37.a5 b8 38.b7 a3 39.a1
f8 40.xa3 e8 41.b3 d7 42.d5
c7 43.b1 e6 44.c1+ d7 45.c4
b2 46.b1 a3 47.c6 c7 48.xb8
xb8 49.b5 c5 50.c6 d4 51.xd6
e3 52.dxe6 fxe6 53.c6 d4 54.e5
h5 55.d1 1-0

Haslinger, C - Gatine, A
ENG-FRA (F5b1), 1992

1.d4 f6 2.c4 g6 3.g3 g7 4.g2 0-0
5.f3 d6 6.0-0 bd7 7.c2 e5 8.c3
a5 9.d1 e7 10.h3 c6 11.d5 c5 12.
e4 d8 13.e3 fd7 14.d2 a4 15.
db1 b6 16.dxc6 bxc6 17.b4 axb3
18.axb3 e6 19.b4 cd7 20.a4 xa4
21.xa4 db8 22.b5 cxb5 23.xb5 d8
24.ab4 xb5 25.xb5 c7 26.f4 h6

GLORNEY & FABER CUPS, DUBLIN 1992 - Round 5.

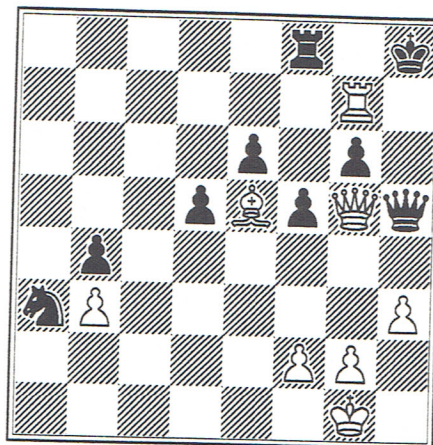
27.♖b3 exf4 28.gxf4 ♖a1+ 29.♕h2 d5
 30.e5 dxc4 31.♖c3 ♖a6 32.♗d5 ♗xd5
 33.♞xd5 ♖b6 34.♞c5 ♖d7 35.♗xc4 ♖a2+
 36.♖g3 ♗xc4 37.♞xc4 ♖a8 38.♞c7 ♖e8
 39.♖c5 ♗f8 40.♖c4 ♖a3 41.♖f2 ♖e6
 42.♖xe6 fxe6 43.♞c8 ♖f7 44.♞c7+ ½-½

Muller, A - Ashby, A
 FRA-ENG (F5b2), 1992

1.e4 e6 2.d4 d5 3.♗d2 ♗f6 4.e5 ♗fd7
 5.f4 c5 6.c3 ♗c6 7.♗df3 ♖b6 8.g3 f6
 9.♗d3 cxd4 10.cxd4 ♗b4+ 11.♖f1 0-0
 12.♖g2 ♖h8 13.♗c2 ♗e7 14.♖d3 g6 15.
 a3 ♖f7 16.h4 ♖a6 17.♖d1 b5 18.h5
 ♖g7 19.♗h4 ♗f8 20.hxg6 hxg6 21.♗xg6
 f5 22.♗xf8 ♞xf8 23.♖h5 ♞g8 24.♖h7+
 ♖f8 25.♗f3 b4 26.♖h6+ ♞g7 27.♖h8+
 ♞g8 28.♖h6+ ♞g7 29.♗d1 ♖d3 30.axb4
 ♗xd4 31.♖a3 ♖b1 32.♞c3 ♗b5 33.♗c2
 ♖a2 34.♞c6 d4 35.♖h8+ ♞g8 36.♖h6+
 ♞g7 37.♗d3 ♖d5 38.♖h8+ ♞g8 39.♖h6+
 ♞g7 40.♖h8+ ♞g8 41.♖h6+ ♞g7 42.♞c2
 ♗b7 43.♞f2 ♗xb4 44.♗xb5 ♖xb5 45.
 ♖f6+ ♖g8 46.♖xe6+ ♞f7 47.♖g6+ ♖f8
 48.e6 ♗xf3+ 49.♞xf3 ♖e2+ 50.♞f2
 ♖e4+ 51.♖g1 ♞c7 52.♖f6+ 1-0

Eastwood, J - Coudray, C
 ENG-FRA (F5b3), 1992

1.e4 c6 2.d4 d5 3.exd5 cxd5 4.♗d3
 ♗c6 5.♗f3 ♗g4 6.c3 ♗f6 7.♗bd2 e6 8.
 0-0 ♗d6 9.♞e1 0-0 10.♖c2 ♗h5 11.♗e5
 ♞c8 12.a3 ♗xd4 13.♖a4 ♗xe5 14.♞xe5
 ♗c6 15.♞e1 ♗g6 16.♗xg6 hxg6 17.♗f3
 ♗e4 18.♗e3 a6 19.♞ad1 ♖a5 20.♖b3 b5
 21.♗f4 ♖b6 22.♞e2 ♗a5 23.♖c2 ♗c4
 24.♗e5 ♞fe8 25.♖d3 a5 26.♖f3 ♖b7
 27.h3 ♖e7 28.♖g4 ♗f6 29.♖f3 ♗e4 30.
 ♖g4 ♗xe5 31.♗xe5 ♞c4 32.♖f3 ♗d6 33.
 ♖d3 ♖d7 34.♖e3 ♞e4 35.♖d3 ♞xe2 36.
 ♖xe2 ♗c4 37.♗d4 ♖c7 38.b3 ♗xa3 39.
 ♖b2 b4 40.cxb4 axb4 41.♗xg7 f5 42.
 ♗e5 ♖d7 43.♖d2 ♖e7 44.♖h6 ♖h7 45.
 ♖g5 ♞e7 46.♞c1 ♞f7 47.♞c8+ ♞f8 48.
 ♞c7 ♖h5 49.♞g7+ ♖h8



(diagram)

Created using Chessbase.

50.♞xg6+ 1-0

RESULTS AFTER THE FIFTH ROUND

GLORNEY GROUP 1

NETHERLANDS	10.5
ENGLAND	9.0
FRANCE	7.0
IRELAND	3.5

GLORNEY GROUP 2

GERMANY	8.5
SCOTLAND	8.5
WALES	8.0
BELGIUM	5.0

FABER GROUP 1

SCOTLAND	5.0
FRANCE	4.5
NETHERLANDS	4.5
ENGLAND	4.0

FABER GROUP 2

WALES	6.0
IRELAND	4.0
GERMANY	4.0
BELGIUM	4.0



NATIONAL
ELECTRICAL
WHOLESALERS

New Wapping Street, Dublin 1.
Telephone: 748201. Fax: 748144.

HOURS OF BUSINESS

8.00 - 17.45, Monday to Friday (including lunch hours)
10.00 - 13.00, Saturday.

BRANCHES:

Unit 26 Stillorgan Park Industrial Estate, Stillorgan, Dublin 18. Tel: 2952526 Fax: 2952527.
Unit 3B Sunbury Industrial Estate, Ballymount Rd. Lr., Walkinstown. Tel: 552400. Fax: 552366.
2/3 Parker Hill, Rathmines Road Lower, Dublin 6. Tel: 979099. Fax: 979945.